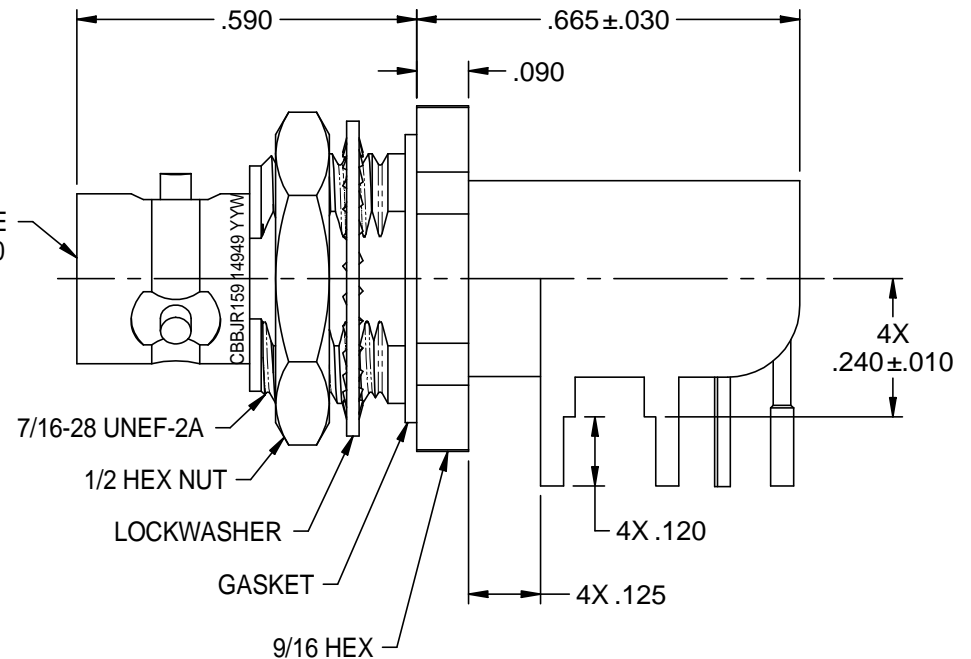


TRS INTERFACE
PER SPC-09500-43-20



NOTES: UNLESS OTHERWISE SPECIFIED

1. MATERIALS AND FINISH

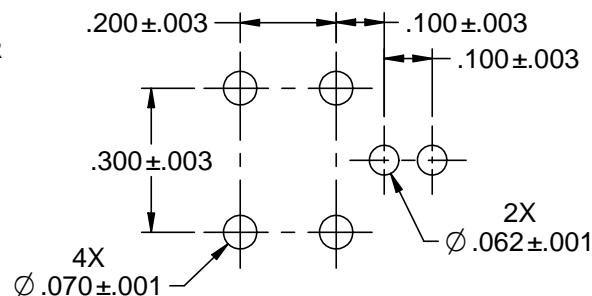
- 1.1 BODY: TIN PLATED BRASS
- 1.2 OUTER INSULATOR: PTFE (TEFLON)
- 1.3 INTERMEDIATE CONTACT: GOLD PLATED BRASS
- 1.4 DIELECTRIC: PTFE (TEFLON)
- 1.5 CENTER CONTACT: GOLD PLATED BERYLLIUM COPPER
- 1.6 MOUNTING HARDWARE: TIN PLATED COPPER ALLOY
- 1.7 GASKET: SILICONE RUBBER

2. ELECTRICAL:

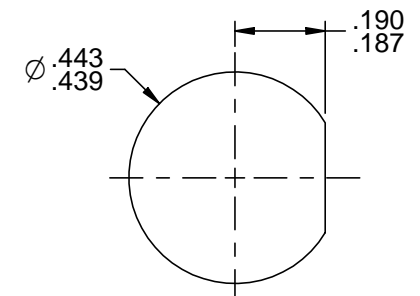
- 2.1 IMPEDANCE: NON-CONSISTANT
- 2.2 FREQUENCY (MAX): 500 MHz

3. PANEL NUT TORQUE (MAX): 30 INCH POUNDS

4. PANEL THICKNESS (MAX): .125



RECOMMENDED MTG HOLE PATTERN



RECOMMENDED PANEL CUTOUT

<p>This PROPRIETARY Document is property of Cinch Connectivity Solutions. It is confidential in nature, non-transferable, and issued with the clear understanding that it is not traced or copied without permission and is returnable upon demand.</p> <p>INTERPRET DRAWING IN ACCORDANCE WITH ASME Y14.5-2009.</p>	<p>3RD ANGLE PROJECTION</p> <p>RoHS2 <input checked="" type="checkbox"/> 2011/65/EU</p> <p>UNLESS OTHERWISE SPECIFIED UNITS: INCH</p> <p>.XX ±.02 .XXX ±.005 ANGLES ±2°</p>	<p>Trompeter</p>		
		<p>Title: TRS, RIGHT ANGLE, BULKHEAD CIRCUT BOARD JACK</p>	<p>Model No. CBBJR159</p>	<p>Size A</p>
		<p>DO NOT SCALE DRAWING</p>	<p>Date: 7/8/2014</p>	<p>Sheet 1 of 1</p>

Mouser Electronics

Authorized Distributor

Click to View Pricing, Inventory, Delivery & Lifecycle Information:

[Cinch Connectivity Solutions:](#)

[CBBJR159](#)