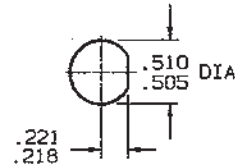


RED INDICATES ORIGINAL

DASH NO	CABLES ACCOMMODATED	ASSEMBLE PER
-7	TRC-50-2/TRC-75-2	TAI-189
-9	TWC-78-2/TWC-124-2	TAI-102
-23	250-3884,MICRODOT	TAI-189
-24	202-3934,MICRODOT	TAI-102
-24A	9530A5117,RAYCHEM	TAI-189
-25	T-43M,GENERAL	TAI-102
-25A	5021H5331,RAYCHEM	TAI-189
-26	7028A5518,RAYCHEM	
-27	202-3927,MICRODOT	
-28	TWC-78-1/TWC-124-1A	TAI-102
-30	761A,W.E.CO./8441,BELDEN	
-32	TRC-50-1	
-33	TRC-75-1	
-42	21-204,ESSEX 4463,CONSOLIDATED	TAI-189
-43	250-4044/250-4045 293-3930,MICRODOT	
-45	M27500-22TE2T14 1100-66F,STANDARD	
-47	M17/176-00002	TAI-102
-49	TWAC-78-1F2	
-55	89272,BELDEN	
-56	6C8756C1,GRUMMAN	TAI-189
-57	6C8756B1,GRUMMAN	
-58	6C875TM24H,GRUMMAN	TAI-102
-59	6C875LN1,GRUMMAN	
-60	M17/177,THERMATICS 380-10045,BOEING	TAI-189
-64	7528A5314,RAYCHEM	

INCH	MM	INCH	MM
.005	0.13	.274	6.96
.096	2.44	.285	7.24
.125	3.18	.300	7.62
.132	3.35	.437	11.10
.145	3.68	.500	12.70
.160	4.06	.505	12.83
.164	4.17	.510	12.95
.183	4.65	.625	15.88
.191	4.85	.687	17.45
.198	5.03	.722	18.34
.200	5.08	.800	20.32
.217	5.51	1.314	33.38
.218	5.54	1.846	46.89
.221	5.61		
.235	5.97		

- △ IF BEND RELIEF SPRING REQD ADD SUFFIX "BR" TO MODEL NO (SEE FIG 2)
- CONCENTRIC TWINAX/TRIAX 4 LUG TRB BULKHEAD MOUNT CABLE RECEPTACLE
  - MAX PANEL THK .160
  - FINISH:TFS-1A (NICKEL)
  - ALL DIM ARE IN INCHES



RECOMMENDED  
PANEL CUTOUT  
SCALE: 1/1

FIG 1  
-7 SHOWN

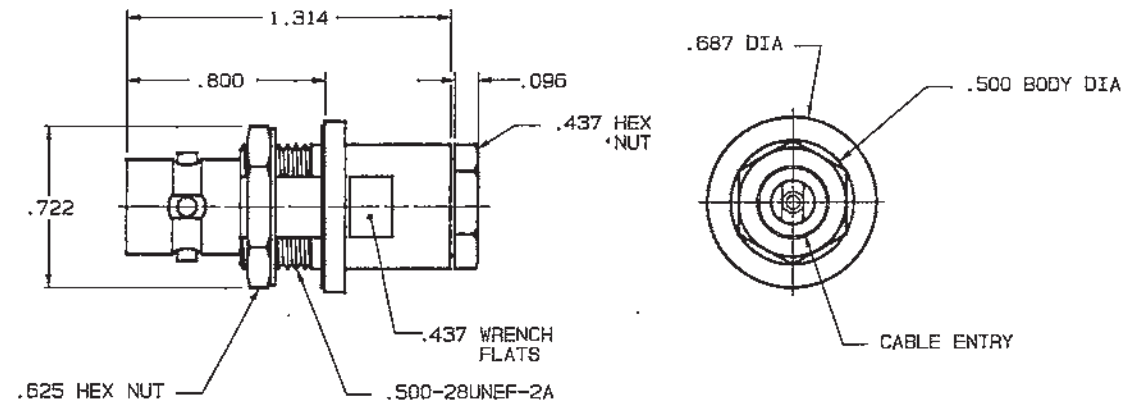
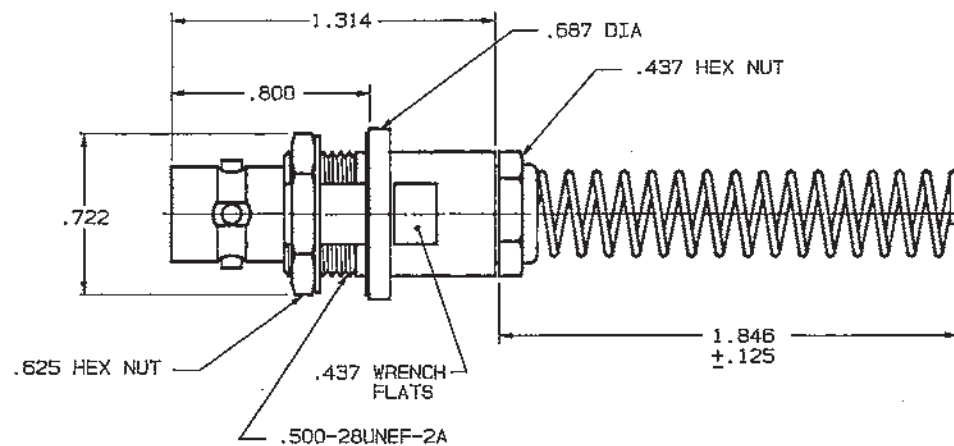


FIG 2 △  
-7 SHOWN



CABLE ENTRY			
DASH NO	DIA	DASH NO	DIA
-7	.274	-33	.217
-9	.285	-42	.300
-23	.183	-43	.200
-24	.191	-45	.183
-24A	.200	-47	.184
-25	.285	-49	.132
-25A	.285	-55	.250
-26	.183	-56	.191
-27	.145	-57	
-29	.191	-58	.198
-30	.235	-59	
-32	.191	-60	.217

QTY	DESCRIPTION	PART NUMBER	ITEM
TOL UNLESS SPECIFIED .XX ± .XXX ± .005 .XXXX ± ANGLES ±	<b>TROMPETER</b> RF connectivity	BJ79FL/BJ79FLBR	
DWN DKC 5-13-91	MATERIAL	CODE IDENT 14949	DRAWING NO. 3-0052
CHK B.M 5-27-91	ENGR	DATE 4-25-83	SHEET 1 OF 2
305-0515	APPR	SCALE 2/1	REV J
NEXT ASSY			

# Mouser Electronics

Authorized Distributor

Click to View Pricing, Inventory, Delivery & Lifecycle Information:

[Cinch Connectivity Solutions:](#)

[BJ79FL-47](#)