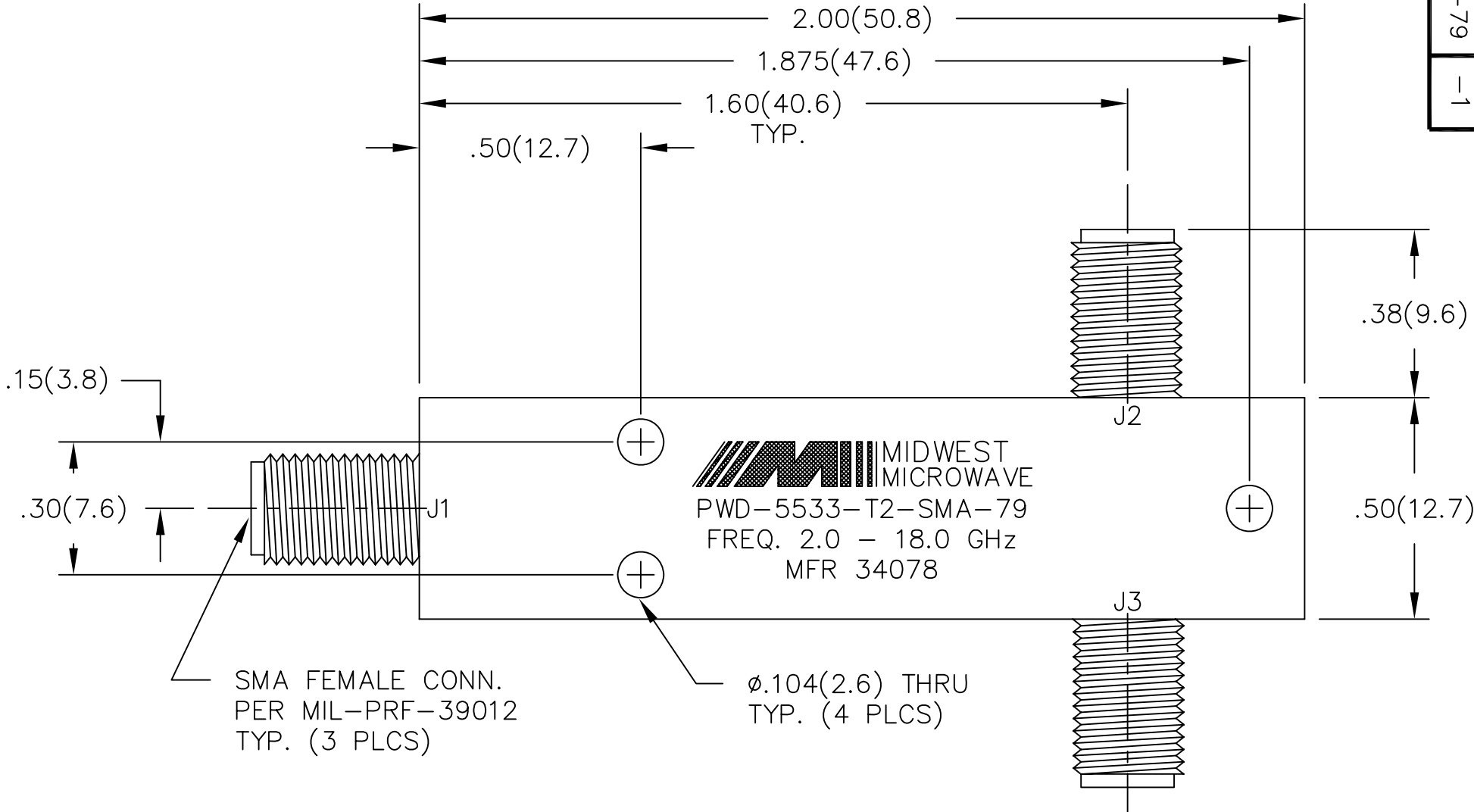
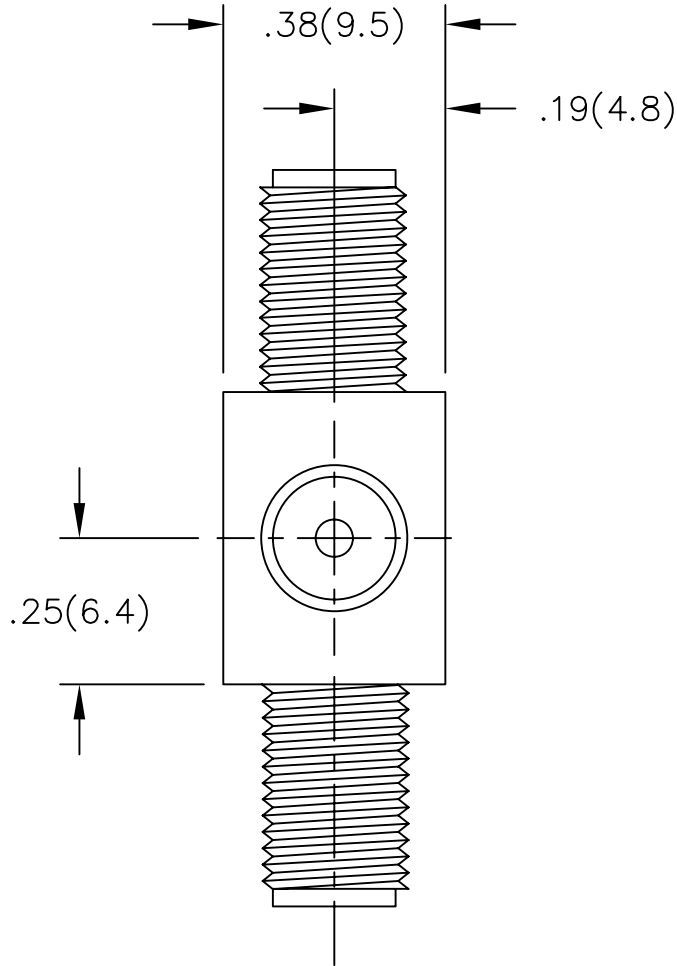


- NOTES:
- 1.0 ELECTRICAL SPECIFICATIONS:
- 1.1 FREQUENCY RANGE: 2.0 – 18.0 GHz
 - 1.2 INSERTION LOSS: 0.8dB
 - 1.3 ISOLATION: 15dB MIN.
 - 1.4 VSWR (MAX): 1.50:1
 - 1.5 OUTPUT UNBALANCE:
 - 1.5.1 AMPLITUDE: 0.3dB MAX.
 - 1.5.2 PHASE: 5° MAX.
 - 1.6 MAXIMUM INPUT POWER: 10 WATTS

- 2.0 FINISH:
- 2.1 GREY PER MIL-E-15090 TYPE II ,
CLASS 2 OVER MIL-C-5541
CLASS 3A
MEETS MIL-F-14072
MEETS MIL-E-5400
 - 2.2 MARKING: MARK UNIT AS SHOWN
(REF.: SLK-08064-82-02)

- 3.0 DIMENSIONS IN PARENTHESIS ARE
IN MILLIMETERS.
- 4.0 WEIGHT: 47 GRAMS MAX.



SMA FEMALE CONN.
PER MIL-PRF-39012
TYP. (3 PLCS)

Ø.104(2.6) THRU
TYP. (4 PLCS)

REV.	DESCRIPTION	DATE
-	RELEASED	6/10/97
-1	ADDED TITLE BLOCK	7/20/05

UNLESS OTHERWISE NOTED DIMENSIONS ARE IN INCHES AND TOLERANCES ARE:		FSCM NO. 34078		MIDWEST MICROWAVE	
		NOTICE: The information contained in this drawing is proprietary and must not be used without the permission of Midwest Microwave		TITLE POWER DIVIDER	
3 PLACE DECIMALS ±.005 2 PLACE DECIMALS ±.02 FRACTIONS ±1/64 PARALLELITY: T.I.R. _____ FLATNESS: T.I.R. _____ CONCENTRICITY: T.I.R. _____ ANGLES AND PERPENDICULARITY: ±1°		DRAWN/DATE J. VERNON 8/6/97	ENG./DATE P. GOODMAN 6/6/97	DRAWING NUMBER PWD-5533-T2-SMA-79	
		CHECKED/DATE	APPROVED/DATE	SCALE: 3=1	SHEET 1 of 1

Mouser Electronics

Authorized Distributor

Click to View Pricing, Inventory, Delivery & Lifecycle Information:

[Cinch Connectivity Solutions:](#)

[PWD-5533-T2-SMA-79](#)