

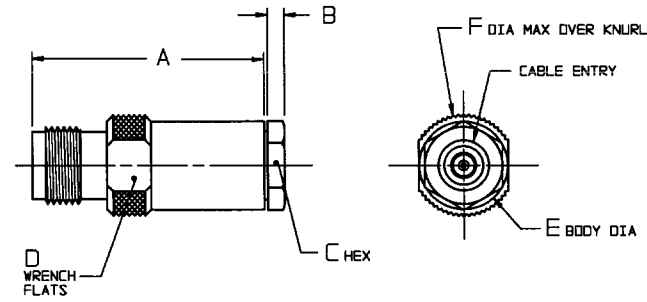
RED INDICATES ORIGINAL

DATA CONTAINED IN THIS DOCUMENT IS PROPRIETARY TO TROMPETER ELECTRONICS, INC. AND SHALL NOT BE DISCLOSED, COPIED OR USED FOR REPRODUCTION OF MANUFACTURE WITHOUT EXPRESS WRITTEN PERMISSION.

REVISIONS			3-0066	SH 1
REV	EO	DESCRIPTION	DWN	APPROVED
P	11465	FOR CHANGES SEE ECO	DKC	11/19/96

TABLE 1									
DASH NO	CABLES ACCOMMODATED	A DIM	B DIM	C HEX	D FLATS	E DIA	F DIA MAX	CABLE ENTRY DIA	ASSEMBLE PER
-7	TRC-50-2 TRC-75-2	1.314	.096	.438	.500	.500	.593	.274	TAI-189
-8	B227 BELDEN	1.648	.130	.625	.688	.750	.775	.345	TAI-103
-9	TWC-78-2 TWC-124-2	1.314	.096	.438	.500	.500	.593	.285	TAI-102
-10	RG-22 754E AT & T							.455	
-11	760A AT & T							.347	TAI-103
-12	16 PEVL AT & T V1-AL GENERAL	1.648	.130	.625	.688	.750	.775	.485	TAI-128
-13	TRF-59 TIMES							.362	TAI-129
-13A	B232 BELDEN							.352	TAI-165
-14	B233 BELDEN							.490	TAI-128
-23	250-3884 MICRODOT							.183	TAI-189
-24	202-3934 MICRODOT							.191	TAI-102
-24A	9530A5117 RAYCHEM							.200	TAI-189
-25	T-43M GENERAL							.285	TAI-102
-25A	5021H5331 RAYCHEM							.285	TAI-102
-26	7028A5518 RAYCHEM							.191	TAI-189
-27	T19TPS J2619N MOVEN 202-3927 MICRODOT 202-3942 MICRODOT							.145	
-29	TWC-78-1/TWC-124-1A	1.314	.096	.438	.500	.500	.593	.191	TAI-102
-30	761A AT & T 8441 BELDEN							.235	
-32	TRC-50-1							.191	
-33	TRC-75-1							.217	
-42	21-204 ESSEX 4463 CONSOLIDATED							.300	TAI-189
-43	250-4044/250-4045 293-3930 MICRODOT							.200	
-45	M27500-22TE2714 1100-66F STANDARD							.183	TAI-102
-46	9860 BELDEN	1.648	.130	.625	.688	.750	.775	.475	TAI-103
-47	M17/176-00002	1.314	.096	.438	.500	.500	.593	.164	TAI-102
-49	TWAC-78-1F2							.132	TAI-102
-54	B9207 BELDEN	1.648	.130	.625	.688	.750	.775	.323	TAI-103
-55	B9272 BELDEN							.250	TAI-102
-56	GC875G1, GRUMMAN							.191	TAI-189
-57	GC875G81, GRUMMAN								
-58	GC875M24H, GRUMMAN	1.314	.096	.438	.500	.500	.593	.198	TAI-102
-59	GC875L1, GRUMMAN								
-60	M17/177 THERMATICS 380-10045 BOEING							.217	TAI-189
-64	7528A5314, RAYCHEM							.183	

FIG 1
-9 SHOWN



INCH	MM
.005	0.13
.096	2.44
.125	3.18
.130	3.30
.132	3.35
.145	3.68
.164	4.17
.183	4.65
.191	4.85
.198	5.03
.200	5.08
.217	5.51
.235	5.97
.250	6.35
.274	6.96
.285	7.24
.300	7.62
.323	8.20
.345	8.76
.347	8.81
.352	8.94
.362	9.19
.438	11.13
.455	11.56
.475	12.07
.485	12.32
.490	12.45
.500	12.70
.593	15.06
.625	15.88
.688	17.48
.750	19.05
.775	19.66
1.314	33.36
1.648	41.86
1.846	46.89

FIG 2
- 9 SHOWN

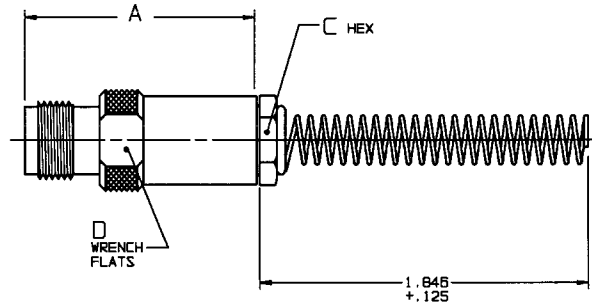


TABLE 2		
MILITARY PART NO (PIN)	MILITARY CABLE PART NO	TROMPETER P/N (REF ONLY)
M49142/11-0001	M17/134-00001	CJ370-7
M49142/11-0002	M17/134-00002	CJ370-7
M49142/11-0006	M17/176-00002	CJ370-47
M49142/11-0009	M17/177-00001	CJ370-60

- △ WHEN CONNECTOR IS SUPPLIED TO MILITARY PART NO. (SEE TABLE 2):
- ALL PARTS NORMALLY PLATED TFS-1A OR TFS-1U (NICKEL) ARE TO BE PLATED TFS-1M (SILVER)
 - MARK PART WITH MILITARY PIN (SEE TABLE) AND "14949"
 - QUALITY CONFORMANCE INSPECTION SHALL BE PER MIL-C-49142 SECTION 4.5

- △ IF BEND RELIEF SPRING REQD (FIG 2)
ADD SUFFIX "BR" TO MODEL NO
(NOT AVAILABLE WITH CABLE GROUPS
-8, -10, -11, -12, -13, -14, -46 & -54)

- CONCENTRIC TWINAX/TRIAX TRT CABLE RECEPTACLE
- FINISH: TFS-1A (NICKEL) △
- ALL DIM ARE IN INCHES

6. EXAMPLE OF COMPLETE MODEL NO.
CJ370 - 7
BASIC MODEL NO. DASH NO.

QTY	DESCRIPTION	PART NUMBER	ITEM
TOL UNLESS SPECIFIED .XX ± .XXX ± .005 ANGLES	TROMPETER ELECTRONICS, INC.	CJ370/CJ370BR	
DWN AAH 1-13-96	MATERIAL	CODE IDENT	DRAWING NO.
CHK 10/1/96		14949	3-0066
ENGR			REV P
NEXT ASSY	APPR 11/19/96	SCALE 2/1	DATE 4-24-81 SHEET 1 OF 2

Mouser Electronics

Authorized Distributor

Click to View Pricing, Inventory, Delivery & Lifecycle Information:

[Cinch Connectivity Solutions:](#)

[CJ370-7](#) [CJ370-23](#)