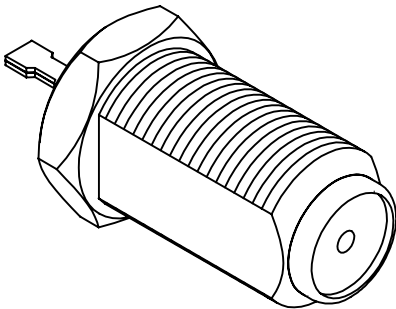
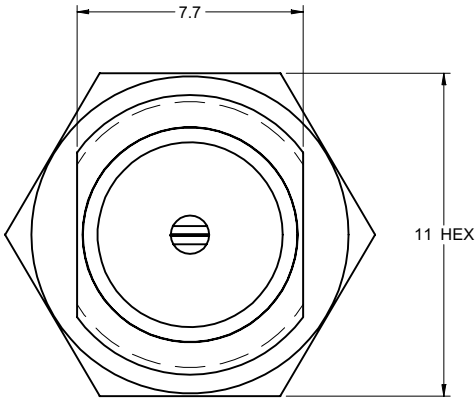
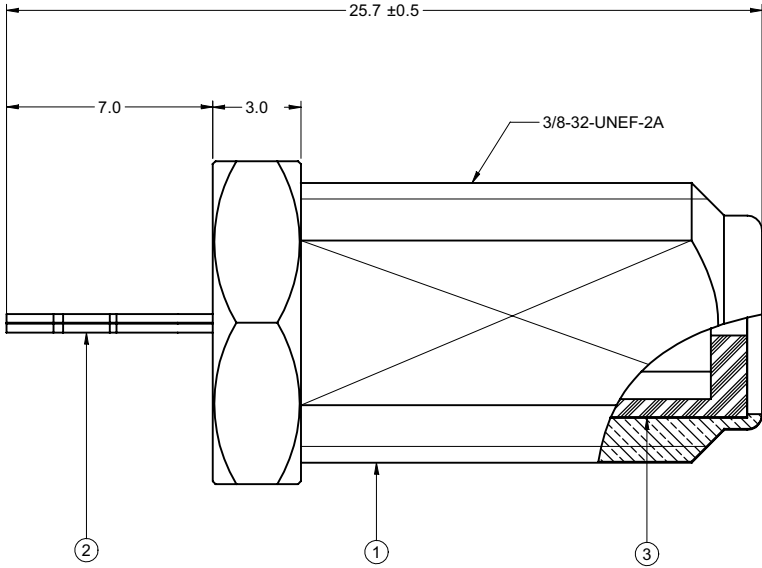


| PART NUMBER | ITEM ① BODY | ITEM ② CONTACT | ITEM ③ INSULATOR |
|-------------|------------------------|------------------------|---------------------|
| 25-7635 | BRASS NICKEL PLATED | BRASS NICKEL PLATED | PP |

| 受控 CONTROLLED DOCUMENT | | | | | |
|------------------------|---------|-----------|----|------------------|-----------|
| 编号 P/N | 25-7635 | 版本 Rev | 0C | 日期 Rel'd Date | Mar 24,08 |

| DRAWING NO. 25-7635 | | | | | |
|------------------------|-------------------------------|---|---|---|--|
| REVISIONS | | | | | |
| A | RELEASE FOR QUOTATION | | | | |
| | 08-10-06 | L | Y | T | |
| B | ADD RoHS AND PACKAGING NOTES. | | | | |
| | 10-23-06 | L | Y | T | |
| C | UPDATE THE NOTE | | | | |
| | 07-06-07 | L | Z | T | Thomas Chow 2007.08.12 15:05:38 +08'00' |



NOTES:
TECHNICAL REQUIREMENT REFER TO EMERSON NET WORK POWER CONNECTIVITY SOLUTIONS DOUCUMENT P/N 25-0000.

| | | | |
|--------------------------------------|--------|------------------------|------------------|
| TOLERANCE UNLESS OTHERWISE SPECIFIED | | DRAWN BY LINDA.WU | DATE 07-06-07 |
| DECIMALS | mm | CHECKED BY GARY.ZHG | DATE 07-06-07 |
| X | ± 0.5 | APPROVED BY THOMAS | DATE 08-07-07 |
| X.X | ± 0.2 | | |
| X.XX | ± 0.1 | | |
| ANGLES | ± 0.5° | U/M | mm |

THIS DRAWING WAS PRODUCED BY COMPUTER,
DO NOT SCALE DRAWING OR UPDATE MANUALLY.

| | | | |
|------------------------------------|--|------------------------|-----------|
| SHEET 1 OF 1 | | DRAWING NO. 25-7635 | SIZE C |
| TITLE F FEMALE SOLDER CHASIS MT | | | |

THIS DRAWING TO BE INTERPRETED
PER ANSI Y 14.5M - 1994

COMPANY CONFIDENTIAL



Mouser Electronics

Authorized Distributor

Click to View Pricing, Inventory, Delivery & Lifecycle Information:

[Cinch Connectivity Solutions:](#)

[25-7635](#)