

DATA CONTAINED IN THIS DOCUMENT IS
PROPRIETARY TO TROMPETER ELECTRONICS INC.
AND SHALL NOT BE DISCLOSED, COPIED OR USED
FOR REPRODUCTION OF MANUFACTURE WITHOUT
EXPRESS WRITTEN PERMISSION.

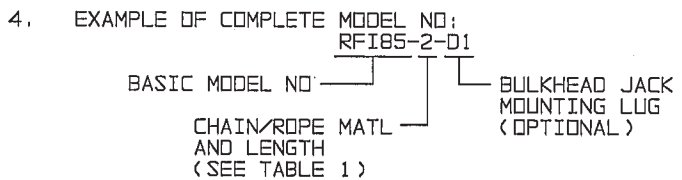
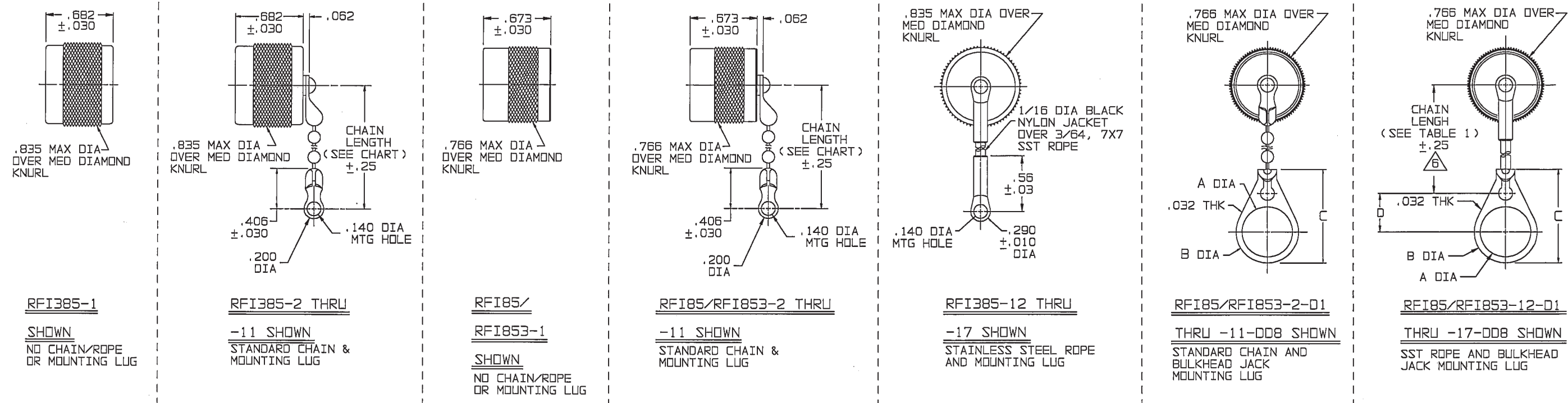
REVISIONS			305-0137		SH 1C
REV	EO	DESCRIPTION	OWN	APPROVED	DATE
F	13357	ADDED -12-D1 THRU -17-DD8, -A12-D1 THRU -A17-DD8, -B12-D1 THRU -B17-DD8 AND ITEM 16 TO BOM FOR SST WITH D-LUG 8-3265-1; UPGRADE TO LARGER FORMAT, UPGRADE TABLE 1 AND 2; ADDED VIEW FOR SST ROPE & D-LUG; CHANGED NOTE 4; .56 ±.03 WAS .560 ±.030; GENERAL UPDATE; SEE ECO	DKC		4/14/00

TABLE 1	
DASH NO	DESCRIPTION
-1	CAP (NO CHAIN)
-2	CAP WITH 2.5 BRASS CHAIN
-3	CAP WITH 2.5 NYLON CHAIN
-4	CAP WITH 3.0 BRASS CHAIN
-5	CAP WITH 3.0 NYLON CHAIN
-6	CAP WITH 6.0 BRASS CHAIN
-7	CAP WITH 6.0 NYLON CHAIN
-8	CAP WITH 4.0 BRASS CHAIN
-9	CAP WITH 4.0 NYLON CHAIN
-10	CAP WITH 10.0 BRASS CHAIN
-11	CAP WITH 10.0 NYLON CHAIN
-12	CAP WITH 2.5 INCH SST ROPE
-13	CAP WITH 3.0 INCH SST ROPE
-14	CAP WITH 6.0 INCH SST ROPE
-15	CAP WITH 4.0 INCH SST ROPE
-16	CAP WITH 7.0 INCH SST ROPE
-17	CAP WITH 4.5 INCH SST ROPE

TABLE 2	
MODEL NO	TYPE
RFI85	2-LUG
RFI853	3-LUG
RFI385	THREAD

TABLE 3				
DASH NO	"A" DIA	"B" DIA	"C" DIM	"D" DIM
-D1	0.755	0.875	1.191	0.513
-D2	0.630	0.750	1.066	0.450
-D3	0.505	0.625	0.941	0.388
-D4	0.439	0.562	0.878	0.356
-D5	0.380	0.500	0.816	0.325
-D6	0.317	0.437	0.753	0.294
-D7	0.281	0.406	0.722	0.278
-D8	0.610	0.750	1.066	0.450
-D9	0.567	0.687	1.003	0.419
-D10	0.192	0.312	0.628	0.231
-D11	1.005	1.125	1.441	0.638
-DD8	0.330	0.450	0.766	0.300

INCH	MM	INCH	MM	INCH	MM	INCH	MM	INCH	MM	INCH	MM	INCH	MM
.005	0.13	.278	7.06	.380	9.65	.56	14.22	.687	17.45	1.003	25.48	6.00	152.40
.010	0.25	.281	7.14	.388	9.86	.562	14.27	.722	18.34	1.005	25.53	7.00	177.80
.030	0.76	.290	7.37	.406	10.31	.567	14.40	.750	19.05	1.066	27.08	10.00	254.00
.032	0.81	.294	7.47	.419	10.64	.610	15.49	.755	19.18	1.125	28.58		
.062	1.57	.300	7.62	.437	11.10	.625	15.88	.766	19.46	1.191	30.25		
.140	3.56	.312	7.92	.439	11.15	.628	15.95	.816	20.73	1.441	36.60		
.192	4.88	.317	8.05	.450	11.43	.630	16.00	.835	21.21	2.50	63.50		
.200	5.08	.325	8.26	.500	12.70	.638	16.21	.875	22.23	3.00	76.20		
.231	5.87	.330	8.38	.505	12.83	.673	17.09	.878	22.30	4.00	101.60		
.25	6.35	.356	9.04	.513	13.03	.682	17.32	.941	23.90	4.50	114.30		



- 3. MALE "C" STYLE DUST CAP
- 2. FINISH: TFS-1A (NICKEL)
- 1. ALL DIM ARE IN INCHES

QTY	DESCRIPTION	PART NUMBER	ITEM
TOL UNLESS SPECIFIED .XX ±.005 .XXX ±.005 .XXXX ±.005 ANGLES		RFI 85/853/385	
DWN DKC	3-21-00	DRAWING NO.	REV
CHK	14949	305-0137	F
ENGR			
APPR			
NEXT ASSY	SCALE 2/1	DATE 11-14-73	SHEET 1C

Mouser Electronics

Authorized Distributor

Click to View Pricing, Inventory, Delivery & Lifecycle Information:

[Cinch Connectivity Solutions:](#)

[RFI85-4](#)