

**CARDCON™**  
**Edge Connector**  
**Commercial**

.100" (2.54mm) Density  
Dip Solder

**CINCH**

**Features**

- AT and XT versions available
- Dip solder tails on .200" (5.08mm) row centers double readout
- Bifurcated semi-bellows contacts for added contact reliability
- Ideal for applications involving vibration or board irregularities
- Contact positions: 12, 15, 18, 20, 22, 25, 28, 30, 31, 36, 37, 40, 43, 44, 49, 50, 52, 60, 70, AT and XT
- Accepts .062" (1.59mm) thick PC boards
- Available less mounting ears, or with .128" (3.25mm) mounting holes or 4-40 threaded holes
- Meets applicable performance criteria of MIL-C-21097
- Tube packaging available
- UL Recognized-file E19071

**Performance Data**

**Materials**

**Insulation Material:** UL 94V-0 rated glass-filled polyester, black

**Contact Material:** Spring brass

**Standard Contact Plating:** 10 pinch selective gold over nickel, 50 pinch nickel in contact area, tin on tails

**XT, AT Plating:** 30 pinch selective gold over 50 pinch nickel in contact area, tin on tails

**Electrical Characteristics**

**Withstanding Voltage:** 650 VAC rms (@ sea level)

**Current Rating:** 3 Amps

**Contact Resistance:** 10 Milliohms maximum

**Insulation Resistance:** 5000 Megohms minimum

**Mechanical Characteristics**

**Individual Contact Insertion and Separation Force:** 12oz. maximum with .070" (1.78mm) blade; 1 oz. minimum with .054" (1.37mm) blade

**Environmental Characteristics**

**Shock:** Per MIL-STD-202E, Method 213, Condition C

**Operating Temperature:** -65°C to +105°C

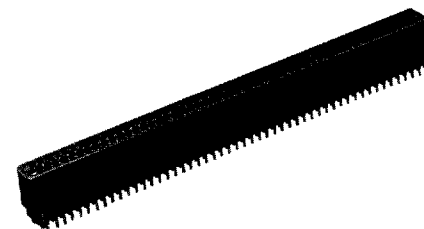
**Vibration:** Per MIL-STD-202E, Method 204, Condition B

**Humidity:** Per MIL-STD-202, Method 103, Condition B

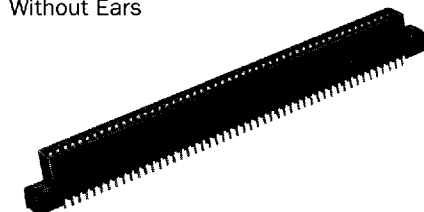
**Accessories**

**Polarizing Key:** Two types (order separately): a) for between-contact polarization and b) for in-contact polarization. See page 36 for more information

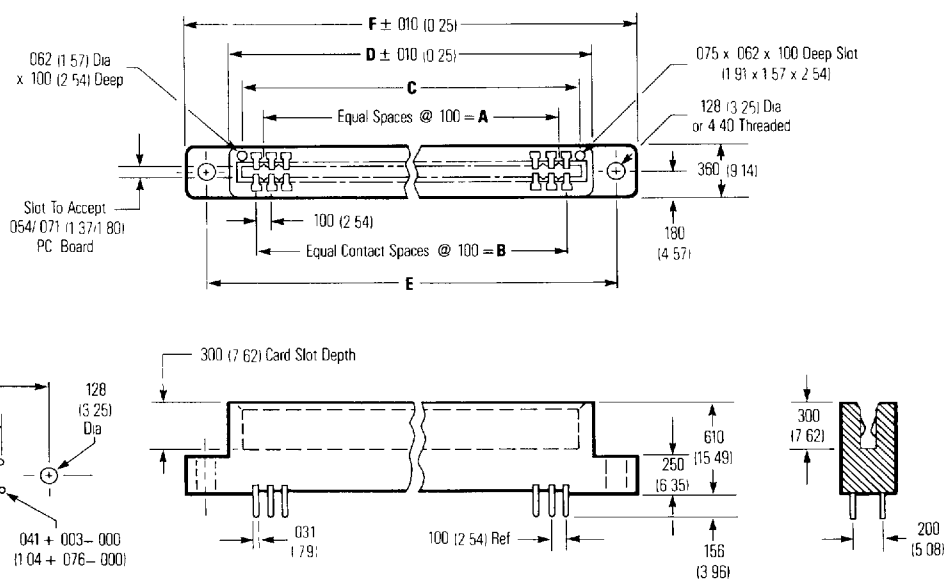
**Card Guide Posts:** (Order separately) Attach to mounting ears and guide PC board into connector. See page 36 for more information



Without Ears



With Ears



**CARDCON™**  
**Edge Connector**  
**Commercial**

.100" (2.54mm) Density  
Dip Solder

**Dimensions**

No. of Pos./Cont.	A		B		C		D		E		F	
	in	mm	in	mm	in	mm	in	mm	in	mm	in	mm
12/24	1.000	25.40	1.100	27.94	1.300	33.02	1.460	37.08	1.775	45.09	2.035	51.69
15/30	1.300	33.02	1.400	35.56	1.600	40.64	1.760	44.70	2.075	52.71	2.335	59.31
18/36	1.600	40.64	1.700	43.18	1.900	48.26	2.060	52.32	2.375	60.33	2.635	66.93
18/36 + 31/62 IBM	5.000	127.00	5.100	129.54	5.300	134.62	5.460	138.68	5.775	146.69	6.035	153.29
20/40	1.800	45.72	1.900	48.26	2.100	53.34	2.260	57.40	2.575	65.41	2.835	72.01
22/44	2.000	50.80	2.100	53.34	2.300	58.42	2.460	62.48	2.775	70.49	3.035	77.09
25/50	2.300	58.42	2.400	60.96	2.600	66.04	2.760	70.10	3.075	78.11	3.335	84.71
28/56	2.600	66.04	2.700	68.58	2.900	73.66	3.060	77.72	3.375	85.73	3.635	92.33
30/60	2.800	71.12	2.900	73.66	3.100	78.74	3.260	82.80	3.575	90.81	3.835	97.41
31/62	2.900	73.66	3.000	76.20	3.200	81.28	3.360	85.34	3.675	93.35	3.935	99.95
31/62 IBM	2.900	73.66	3.000	76.20	3.200	81.28	3.360	85.34	3.675	93.35	3.935	99.95
36/72	3.400	86.36	3.500	88.90	3.700	93.98	3.860	98.04	4.175	106.05	4.435	112.63
37/74	3.500	88.90	3.600	91.44	3.800	96.52	3.960	100.58	4.275	108.59	4.535	115.19
40/80	3.800	96.52	3.900	99.06	4.100	104.14	4.260	108.20	4.575	116.21	4.835	122.81
43/86	4.100	104.14	4.200	106.68	4.400	111.76	4.560	115.82	4.875	123.83	5.135	130.43
44/88	4.200	106.68	4.300	109.22	4.500	114.30	4.660	118.36	4.975	126.37	5.235	132.97
49/98	4.700	119.38	4.800	121.92	5.000	127.00	5.160	131.06	5.475	139.07	5.735	145.67
50/100	4.800	121.92	4.900	124.46	5.100	129.54	5.260	133.60	5.575	141.61	5.835	148.21
52/104	5.000	127.00	5.100	129.54	5.300	134.62	5.460	138.68	5.775	146.69	6.035	153.29
60/120	5.800	147.32	5.900	149.86	6.100	154.94	6.260	159.00	6.575	167.01	6.835	173.61
70/140	6.800	172.72	6.900	175.26	7.100	180.34	7.260	184.40	7.575	192.41	7.835	199.01

**Ordering Information**

No. of Pos./Cont.	Less Mounting Ears	.128" (3.25mm) Mounting Holes	4-40 Threaded Holes
	Part No.	Part No.	Part No.
12/24	50-12SN-12	50-12SN-11	50-12SN-13
15/30	50-15SN-12	50-15SN-11	50-15SN-13
18/36	50-18SN-12	50-18SN-11	50-18SN-13
18/36 + 31/62 IBM	50-52SN-AT	—	—
20/40	50-20SN-12	50-20SN-11	50-20SN-13
22/44	50-22SN-12	50-22SN-11	50-22SN-13
25/50	50-25SN-12	50-25SN-11	50-25SN-13
28/56	50-28SN-12	50-28SN-11	50-28SN-13
30/60	50-30SN-12	50-30SN-11	50-30SN-13
31/62	50-31SN-12	50-31SN-11	50-31SN-13
31/62 IBM	50-31SN-XT	—	—
36/72	50-36SN-12	50-36SN-11	50-36SN-13
37/74	50-37SN-12	50-37SN-11	50-37SN-13
40/80	50-40SN-12	50-40SN-11	50-40SN-13
43/86	50-43SN-12	50-43SN-11	50-43SN-13
44/88	50-44SN-12	50-44SN-11	50-44SN-13
49/98	50-49SN-12	50-49SN-11	50-49SN-13
50/100	50-50SN-12	50-50SN-11	50-50SN-13
52/104	50-52SN-12	50-52SN-11	50-52SN-13
60/120	50-60SN-12	50-60SN-11	50-60SN-13
70/140	50-70SN-12	50-70SN-11	50-70SN-13

# Mouser Electronics

Authorized Distributor

Click to View Pricing, Inventory, Delivery & Lifecycle Information:

[Cinch Connectivity Solutions:](#)

[50-31SN-12](#)