

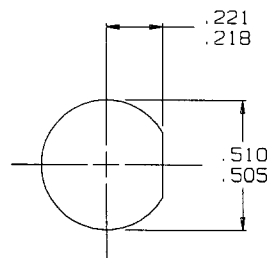
DATA CONTAINED IN THIS DOCUMENT IS
 PROPRIETARY TO TROMPETER ELECTRONICS INC.
 AND SHALL NOT BE DISCLOSED, COPIED OR USED
 FOR PROCUREMENT OR MANUFACTURE WITHOUT
 EXPRESS WRITTEN PERMISSION.

REVISIONS

305-0506

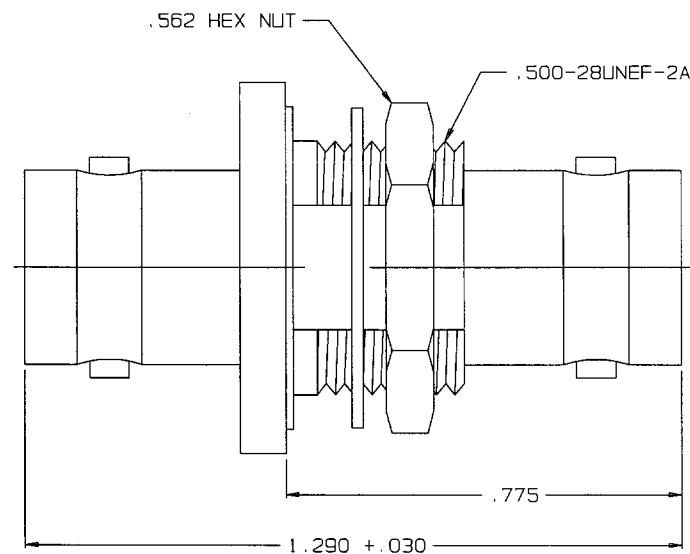
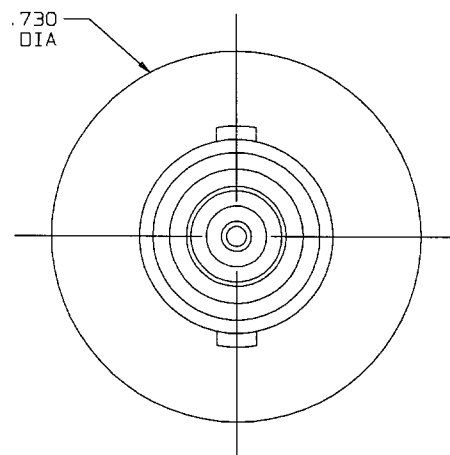
SH 2

REV	ED	DESCRIPTION	OWN	APPROVED	DATE
E	13380	UPDATED DRAWING & DELETED NOTE 1 SHEET 2 SEE ECO	R L	<i>RLM</i>	4/20/00



RECOMMENDED
 PANEL CUTOUT
 SCALE: 2/1

RED INDICATES ORIGINAL



INCH	MM
.005	0.13
.030	0.76
.187	4.75
.218	5.54
.221	5.61
.505	12.83
.510	12.95
.562	14.27
.730	18.54
.775	19.69
1.290	32.77

- CONCETRIC TWINAX/TRIAX 2-LUG
 TRB BULKHEAD MOUNT FEEDTHRU RECEPTACLE
- MAX PANEL THK .187
- FINISH: TFS-1A (NICKEL)
- ALL DIMS ARE INCHES

QTY	DESCRIPTION			PART NUMBER	ITEM	
TOL UNLESS SPECIFIED .XX ± .XXX ± .XXXX ± ANGLES ±			TROMPETER ELECTRONICS, INC.		BJ78TL	
DWN	R L	4/4/00	MATERIAL	CODE IDENT	DRAWING NO.	REV
CHK	RLM	4/19/00	—	14949	305-0506	E
ENGR						
APPR	RLM	4/19/00	SCALE 4/1	DATE 9-20-83	SHEET 1C	

Mouser Electronics

Authorized Distributor

Click to View Pricing, Inventory, Delivery & Lifecycle Information:

[Cinch Connectivity Solutions:](#)

[BJ78TL](#)