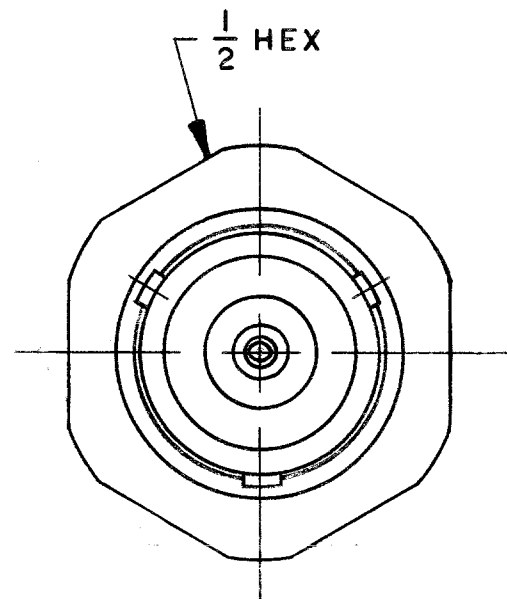
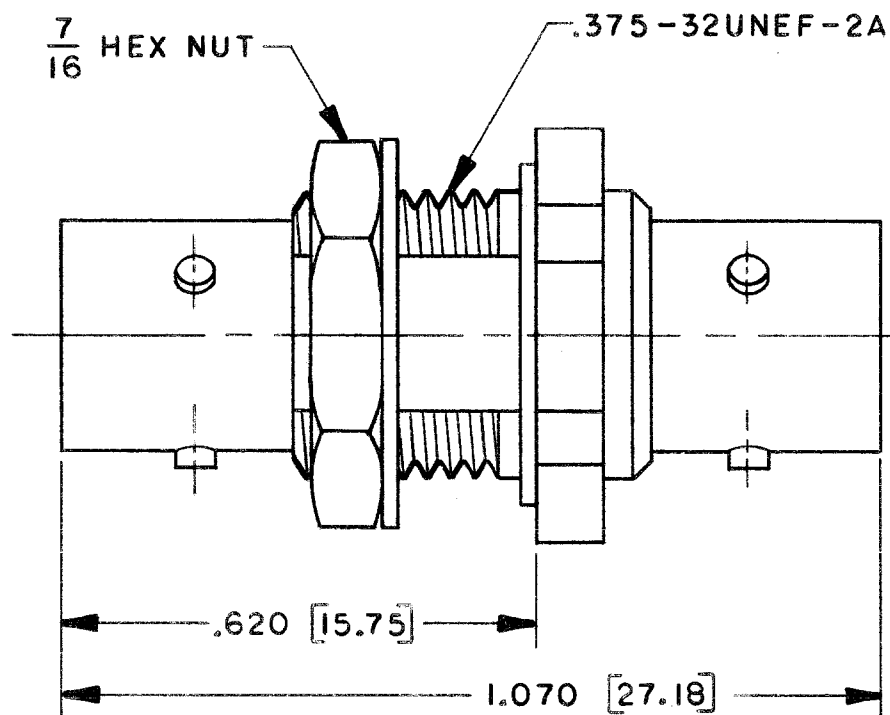


RECOMMENDED  
PANEL CUTOUT  
SCALE: 2/1



4. MAX PANEL THK .190 [4.83]

3. FEMALE SUBMINIATURE CONCENTRIC  
TWINAX/TRIAX BULKHEAD FEED THRU  
JACK (TPS STYLE)

2. FINISH: TFS-1A (NICKEL)

1. ALL DIM ARE REF  
IN INCHES AND [MM]

REVISIONS			3000-0038 SH 1		
REV	EO	DESCRIPTION	DWN	APPROVED	DATE

QTY	DESCRIPTION			PART NUMBER		ITEM
TOL UNLESS SPECIFIED .XX ± .XXX ± .XXXX ± ANGLES±			TROMPETER ELECTRONICS, INC.		BJ158	
DWN	JFD	8-16-78	MATERIAL	CODE IDENT	DRAWING NO.	REV
CHK	<i>[Signature]</i>	8-18-78	—	14949	3000-0038	
ENGR	<i>RSB</i>	8-23-78				
APPR	<i>[Signature]</i>	8-23-78	SCALE 4 / 1	DATE 8-23-78	SHEET 1 OF 2	

NEXT ASSY

# Mouser Electronics

Authorized Distributor

Click to View Pricing, Inventory, Delivery & Lifecycle Information:

[Cinch Connectivity Solutions:](#)

[BJ158](#)