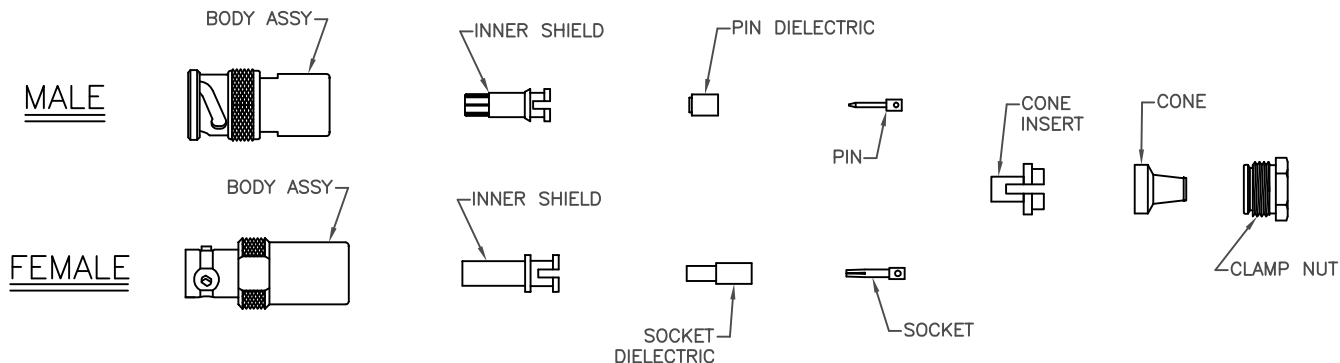


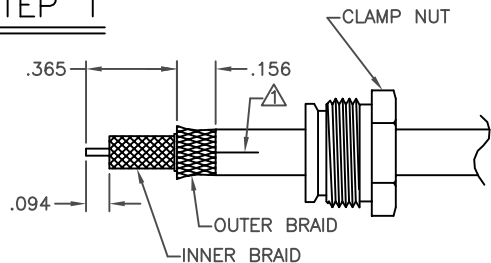
THE INFORMATION CONTAINED HEREON IS THE PROPERTY OF EMERSON NETWORK POWER, RECEIPT, POSSESSION OR TRANSMITTAL OF THIS DRAWING DOES NOT LICENSE OR IMPLY ANY RIGHT TO USE, SELL, PROTOTYPE OR MANUFACTURE FROM THIS INFORMATION. NO REPRODUCTIONS OR PUBLICATION OF THIS INFORMATION, IN WHOLE OR IN PART, SHALL BE MADE WITHOUT WRITTEN AUTHORIZATION FROM EMERSON NETWORK POWER.

DWG NO. TAI-189 SH 1



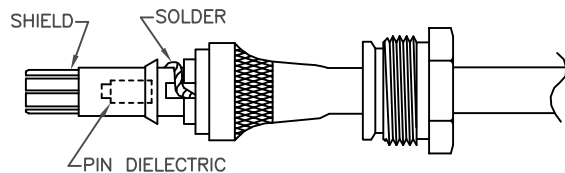
REVISIONS			
REV	DESCRIPTION	DATE	APPROVED
c	ECO 52208	4/5/10	T. KOHLER

STEP 1



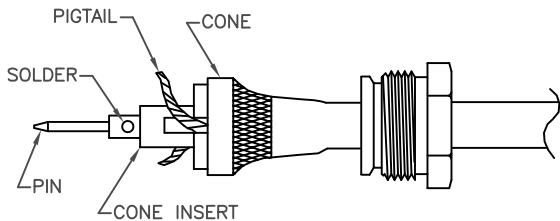
- PLACE CLAMP NUT ONTO CABLE
- STRIP CABLE AS SHOWN AND FLARE OUTER BRAID TO ALLOW FREE ENTRY OF CONE (▲ LATERAL; SLITS, 180° APART MAY BE REQUIRED FOR VERY INFLEXIBLE JACKET MATERIALS)
- LIGHTLY TIN CENTER CONDUCTOR

STEP 3



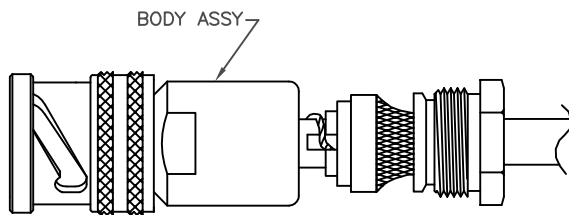
- INSTALL PIN DIELECTRIC OVER PIN AND SHIELD WITH PIGTAILS THROUGH NOTCHES
- WRAP PIGTAILS BETWEEN SHIELD RIDGES AND SOLDER (DO NOT ALLOW PIGTAILS AND SOLDER TO EXTEND ABOVE RIDGES)

STEP 2



- PUSH CONE UNDER OUTER BRAID UNTIL BRAID IS FLUSH WITH EDGE OF CONE, TRIM ANY ERRANT STRANDS.
- SEPARATE INNER BRAID AND PIGTAIL BOTH SIDES
- INSTALL CONE INSERT INTO CONE WITH PIGTAILS THROUGH SIDE SLOTS.
- POSITION PIN AND SOLDER IN PLACE

STEP 4



- BRING CLAMP NUT UP ONTO TAPERED PORTION OF CONE
- ASSEMBLE BODY ASSY OVER ENTIRE ASSEMBLY AND ENGAGE WITH CLAMP NUT
- WRENCH TIGHTEN TO 25-30 IN LB TORQUE

UNLESS OTHERWISE SPECIFIED
DIMENSIONS ARE IN INCHES
TOLERANCES ARE:

FRACTIONS	DECIMALS	ANGLES
±	.XX ± .010	± 2°
	.XXX ± .005	
	.XXXX ±	

SIGNATURES	DATE
DRAWN BY C. WALLACE	4/5/10
CHECKED BY	
APPROVED BY	
APPROVED BY	

ASSEMBLY INSTRUCTIONS

"WRENCH CRIMP" 70 SERIES
TRIAx CONNECTORS TO
.250" DIA CABLE



cinch
CONNECTIVITY SOLUTIONS

a bel group

Cinch Connectivity Solutions
299 Johnson Avenue SW, Suite 100
Waseca, MN 56093 USA
T: +1 507.833.8822 F: +1 507.833.6287
cinch.com

MGF. CODE NO. 14949

TAI-189

REV C

MADE IN USA



cinch
CONNECTIVITY SOLUTIONS
a bel group

WRENCH CRIMP 70 SERIES TRIAX
CONNECTORS TO .250 DIA CABLE

SIZE	CAGE CODE	DWG NO.	REV
B	14949	TAI-189	c
SCALE	N/A		SHEET 1 OF 2

Mouser Electronics

Authorized Distributor

Click to View Pricing, Inventory, Delivery & Lifecycle Information:

Cinch Connectivity Solutions:

[M49142/04-0004](#) [M49142/08-0017](#) [M49142/03-0011](#) [M49142/08-0010](#)