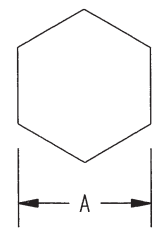


DASH NO	CABLES ACCOMMODATED	A HEX	B DIM	C MAX	ASSEMBLE PER
-201	M17/176-00002	.344	.030	1.80	TAI-166
-202	TWC-78-1				
-203	TWC-124-1A				
-204	10602, RAYCHEM				
-205	TWAC-78-1F2				
-206	782600130, RAYCHEM				
-207	83310, BELDEN				
-208	202-3927, MICRODOT				
-209	202-3942, MICRODOT				
-210	8451, BELDEN				
-211	202-3934, MICRODOT				
-212	2524E0114, RAYCHEM				
-213	TWC-78-2				
-214	TWC-124-2				
-215	BL982, TIMES				
-216	BL1242, TIMES				
-217	GC875TM24H, GRUMMAN				
-218	EDP221888, RAYCHEM				
-219	252601114, RAYCHEM				
-220	GC875RRI, GRUMMAN				
-221	10614, RAYCHEM				
-222	10613, RAYCHEM				
-223	HMS2-1149, HUGHES				
				1.55	TAI-138
				1.80	TAI-166

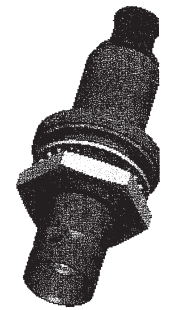
DATA CONTAINED IN THIS DOCUMENT IS PROPRIETARY TO TROMPETER ELECTRONICS INC. AND SHALL NOT BE DISCLOSED, COPIED OR USED FOR PROCUREMENT OR MANUFACTURE WITHOUT EXPRESS WRITTEN PERMISSION.

REVISIONS			
REV	DESCRIPTIONS	DATE	APPROVED
P	REVISED PER ECO # 16550	2/13/08	<i>[Signature]</i>

DASH NO	CABLES ACCOMMODATED	A HEX	B DIM	C MAX	ASSEMBLE PER
-301	GC875GC1, GRUMMAN	.344	.030	1.80	TAI-168
-302	GC875GB1, GRUMMAN				
-303	7528A5314 RAYCHEM				
-304					
-305	M17/177-00001, THERMATICS				TAI-218
-306	TRC-50-2 M17/134-00002				TAI-168
-307	TRC-75-1				TAI-218
-308	TRC-75-2				TAI-168
-309	TRC-50-1				TAI-168

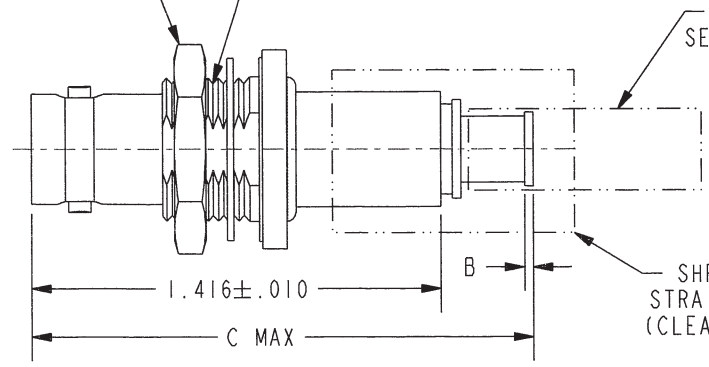


RECOMMENDED HEX CRIMP SCALE 2/1

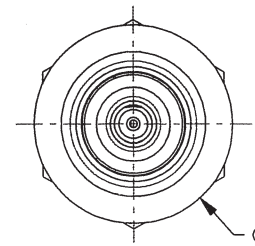


SCALE 1/1

.625 HEX NUT .500-28 UNEF-2A



4



SCALE 2/1

-202 SHOWN

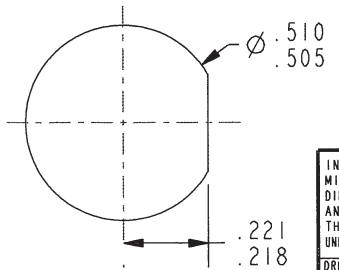
5. EXAMPLE OF COMPLETE MODEL NUMBER:

BJ79CTL-201

BASIC MODEL NO. CABLE GROUP DASH NO

4 1 SHRINKABLE STRAIN RELIEF AND/OR SHRINKABLE SEALING SLEEVE SUPPLIED LOOSE AS FOLLOWS:

- a. CABLE GROUPS -201 THROUGH -210, -217 THROUGH -303, -305, -307, & -309
 - 1 SHRINKABLE STRAIN RELIEF (1.00 LONG)
 - 1 SHRINKABLE SEALING SLEEVE (1.25 LONG)
- b. CABLE GROUPS -211 THROUGH -216 AND -306 & -308
 - 1 SHRINKABLE STRAIN RELIEF (1.75 LONG)



RECOMMENDED PANEL CUTOUT SCALE 2/1

- 3. MAXIMUM PANEL THICKNESS .109
- 2. FINISH: TFS-1A (NICKEL)
- 1. 2-LUG CONCENTRIC TWINAX/TRIAX TRB, FULL CRIMP BULKHEAD MOUNT CABLE RECEPTACLE

NOTES: UNLESS OTHERWISE SPECIFIED.

INTERPRET DRAWING PER MIL-STD-100. DIMENSIONS ARE IN INCHES AND INCLUDE FINISH THICKNESS UNLESS OTHERWISE SPECIFIED.		TOL: UNLESS SPECIFIED. .XX ± .02 .XXX ± .010 ANGLE ± 1°			
DRN J. CARPENTER 12-12-07	MAT'IAL: 	TITLE: BJ79CTL			
CHK M.J. 2-13-08 QUALITY	FINISH: 	SIZE A	CAGE CODE 14949	DRAWING NO. 3-0206	REV. P
MANUF 	APPROV <i>[Signature]</i> 2/13/08	SCALE 2/1	DATE 11-11-86	SHEET IC	DO NOT SCALE DWG

NEXT ASSY	PROTE FILE NO. 3-0206	DO NOT SCALE DWG	SCALE 2/1	DATE 11-11-86	SHEET IC
-----------	--------------------------	------------------	--------------	------------------	-------------

Mouser Electronics

Authorized Distributor

Click to View Pricing, Inventory, Delivery & Lifecycle Information:

[Cinch Connectivity Solutions:](#)

[BJ79CTL-303](#)