

DASH NO	CONNECTOR TYPE	MATERIAL ⁴	ASSEMBLE PER	FIG	MTG HOLE FIG
-1	PL80	1-0156-14A	TAI-175	1A	—
-2	CJ80	1-0152-14A		2A	—
-3	BJ89	3-0035-14A		3A	6
-4	BJ89F	305-0039-14A		4A	5
-5	PL803	3-0106-14A		1A	—
-6	CJ803	3-0111-14A		2A	—
-7	BJ893	3-0263-14A		3A	6
-8	BJ893F	3-0107-14A		4A	5
-9	PL380	3-0103-14A		1B	—
-10	CJ380	3-0216-14A		2B	—
-11	BJ389	3-0264-14A		3B	6
-12	BJ389F	3-0261-14A		4B	5

DATA CONTAINED IN THIS DOCUMENT IS PROPRIETARY TO TROMPETER ELECTRONICS INC. AND SHALL NOT BE DISCLOSED, COPIED OR USED FOR PROCUREMENT OR MANUFACTURE WITHOUT EXPRESS WRITTEN PERMISSION OF TROMPETER ELECTRONICS INC.

REVISIONS		305-0654	SH 1
REV	DESCRIPTION	DATE	APPROVED
A	REVISED PER ECO 15127	7/30/80	WJ

FIG 1

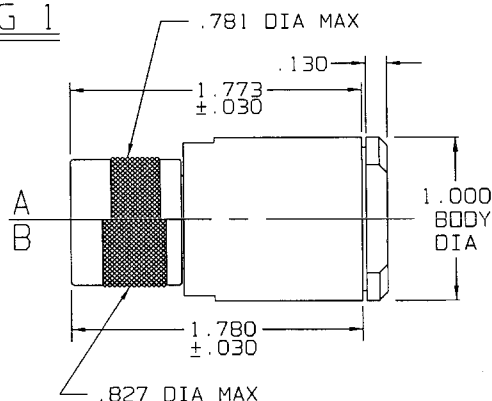


FIG 2

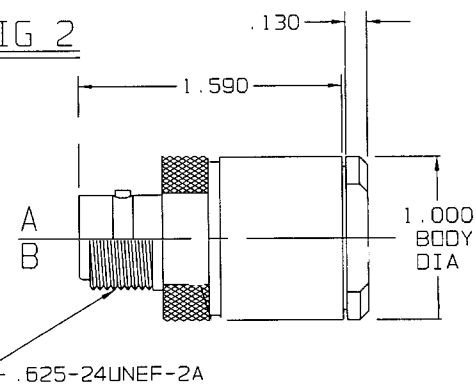
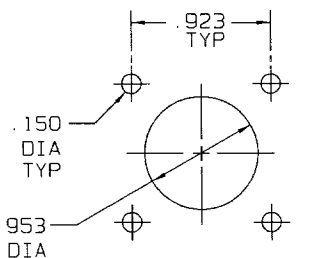
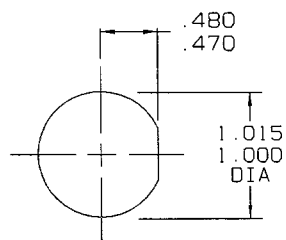


FIG 5



RECOMMENDED
MTG HOLE PATTERN
MAX PANEL THK .250

FIG 6



RECOMMENDED
PANEL CUTOUT
MAX PNL THK .250

FIG 3

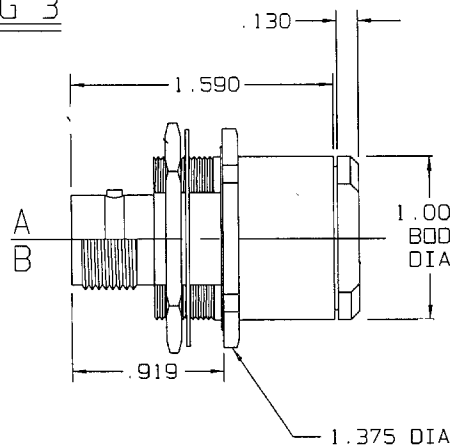
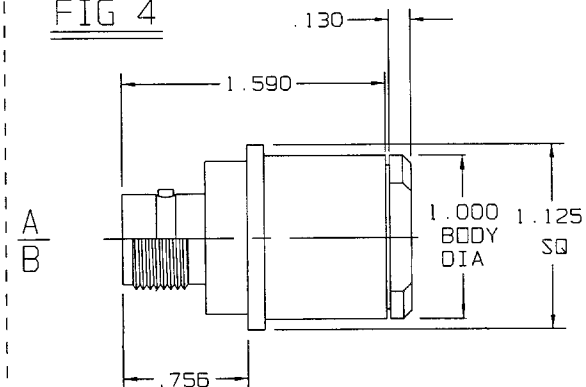


FIG 4



⁴ REPLACE 8-1939 CONE WITH 305-0654-101 CONE, 8-1342 CONE DIELECTRIC WITH 305-0654-102 CONE DIELECTRIC AND 8-1935 CLAMP NUT WITH 305-0645-104 CLAMP NUT

3. CONCENTRIC TWINAX/TRIAx "C" STYLE 2-LUG, 3-LUG AND THREADED PLUG/RECEPTACLE/ BULKHEAD MT/FLANGE MT RECEPTACLE FOR COMMScope CABLE NO. 30301A

2. FINISH: TFS-1A (NICKEL)

1. ALL DIM ARE IN INCHES

INTERPRET DRAWING PER MIL-STD-100 DIMENSIONS ARE IN INCHES AND INCLUDE FINISH THICKNESS UNLESS OTHERWISE SPECIFIED

DRAWN AAH
CHECKED JH
QUALITY JH
MANUFACTURE JH
APPROVED JH
DATE 7-28-03
DATE 7/30/03
DATE 7/30/03

TOL: UNLESS SPECIFIED
.XX
.XXX ± .005
.XXXX
ANGLES

MATERIAL:
FINISH:

TROMPETER
ELECTRONICS, INC.

TITLE:
"80" SERIES XLARGE-30301A

SIZE A	CAGE CODE 14949	DRAWING NO. 305-0654	REV. A
SCALE NONE	DATE 6-3-87	SHEET 1C	

NEXT ASSY CAD FILE NO 305-0654A

DO NOT SCALE DWG

Mouser Electronics

Authorized Distributor

Click to View Pricing, Inventory, Delivery & Lifecycle Information:

[Cinch Connectivity Solutions:](#)

[BJ893-7](#)