

RED INDICATES ORIGINAL

DATA CONTAINED IN THIS DOCUMENT IS PROPRIETARY TO EMERSON CONNECTIVITY SOLUTIONS AND SHALL NOT BE DISCLOSED, COPIED OR USED FOR PROMOTION OR MANUFACTURE WITHOUT EXPRESS WRITTEN PERMISSION

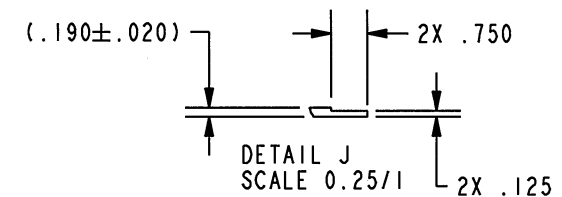
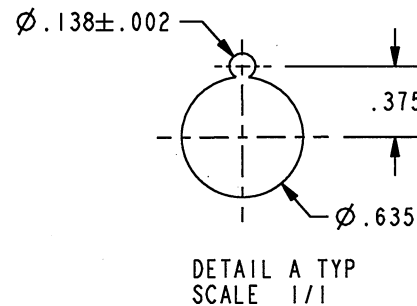
REVISIONS

REV	DESCRIPTIONS	DATE	APPROVED
M	REVISED PER ECO 16939	8-17-09	AMC.

TABLE 1					
DASH NUMBER	A HOLE QUANTITY	B $\pm .015$	C	D	SPECIAL FEATURES AND/OR REMARKS
-1	24	3.468	1.046	1.430	---
-2	24	6.968	4.000	1.430	---
-3	24	5.218	2.750	1.430	---
-4	24	6.968	4.500	1.380	SEE DETAIL J
-5	20	6.968	4.500	1.500	---
-6	20	8.718	4.718	1.500	DS1 (.580 WIDE) ABOVE EACH ROW
-7	10	1.718	---	1.500	ONE ROW ONLY
-8	12	1.718	---	1.430	STANDARD CATALOG JSH/JSHI-12
-9	13	3.468	---	1.310	ONE ROW ONLY
-10	15	1.718	---	1.125	ONE ROW ONLY
-11	24	3.468	1.062	1.430	---
-12	32	6.968	3.000	1.062	---
-13	24	5.218	3.000	1.430	STANDARD CATALOG JSH/JSHI-24 AND LPH50
-14	18	5.218	3.000	1.500	DS5 (.424 WIDE) 2 PLACES

TABLE 2		
LETTER CODE	MATERIAL	MODEL TYPE
A	ALUMINUM ALLOY WITH TFS-2A OPEN SLOTS	JSH
B	PHENOLIC WITH TFS-2B CLOSED SLOTS	JSHI

TABLE 3	
OPTION NUMBER	NON-STANDARD OPTIONS
1	AS SHOWN (ASSEMBLY)
2	ASSEMBLY WITH J94 CONNECTORS
3	ASSEMBLY WITHOUT PAINT OR DSI
4	CODE 3 WITHOUT SCREW HEADS
5	PANEL ONLY WITH PAINT
6	PANEL ONLY WITHOUT PAINT
7	24 HOLE ASSEMBLY WITH 20 J94 CONNECTORS
8	PAINT BLACK SEMI GLOSS PER FEDERAL STANDARD 27038

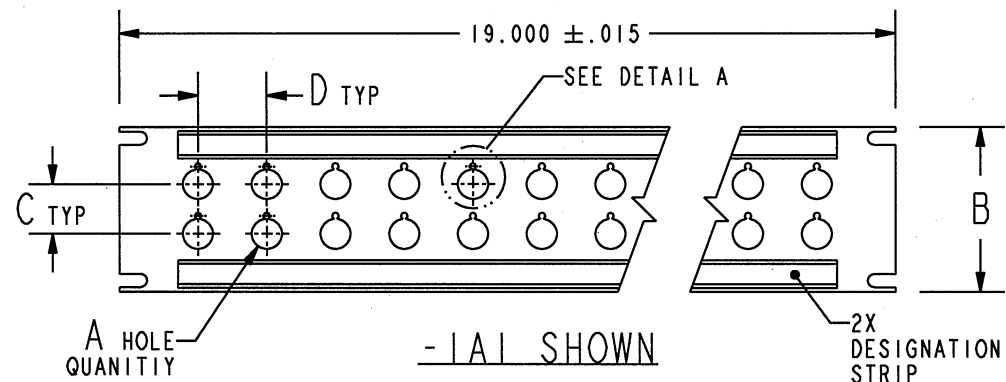
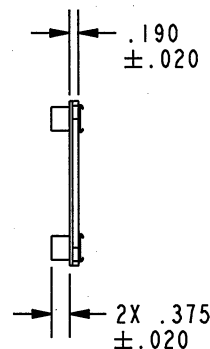


3. EXAMPLE OF COMPLETE MODEL NUMBER:

JSH-32/J94
 BASIC MODEL NUMBER
 A HOLE QUANTITY SEE TABLE 1
 ASSEMBLY WITH J94 CONNECTORS

2. EXAMPLE OF COMPLETE PART NUMBER:

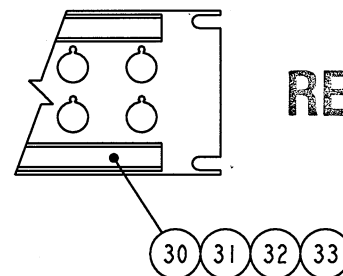
155-0494-1 A 1
 BASIC PART NUMBER
 DASH NUMBER SEE TABLE 1
 OPTION NUMBER SEE TABLE 3
 MATERIAL LETTER CODE SEE TABLE 2



- DS1 (.580 WIDE) DESIGNATION STRIP REQUIRED ON -4 THRU-8, -10, -11 AND -13
- DS2 (.870 WIDE) DESIGNATION STRIP REQUIRED ON -1 THRU -3, -9 AND -12
- DS5 (.424 WIDE) DESIGNATION STRIP REQUIRED ON -14

NOTES: UNLESS OTHERWISE SPECIFIED.

INTERPRET DRAWING PER MIL-STD-100. DIMENSIONS ARE IN INCHES AND INCLUDE FINISH THICKNESS UNLESS OTHERWISE SPECIFIED.		TOL: UNLESS SPECIFIED. .XX \pm .02 .XXX \pm .010 ANGLE \pm 1°				Connectivity Solutions 5550 E. McDowell Rd. Mesa, AZ 85215 1-800-778-4401		
DRN	L.M.	7-6-09	MATERIAL:	TITLE:				
CHK	M.J.	7-13-09	FINISH:	JSH/JSHI PANELS/J94				
QUALITY				SIZE	CAGE CODE	DRAWING NO.	REV.	
MANUF				A	14949	155-0494	M	
APPROVED	8/17/09			SCALE	0.25/1	DATE	8-9-78	
NEXT ASSY		155-0494	DO NOT SCALE DWG		SHEET			1C

[illegible]

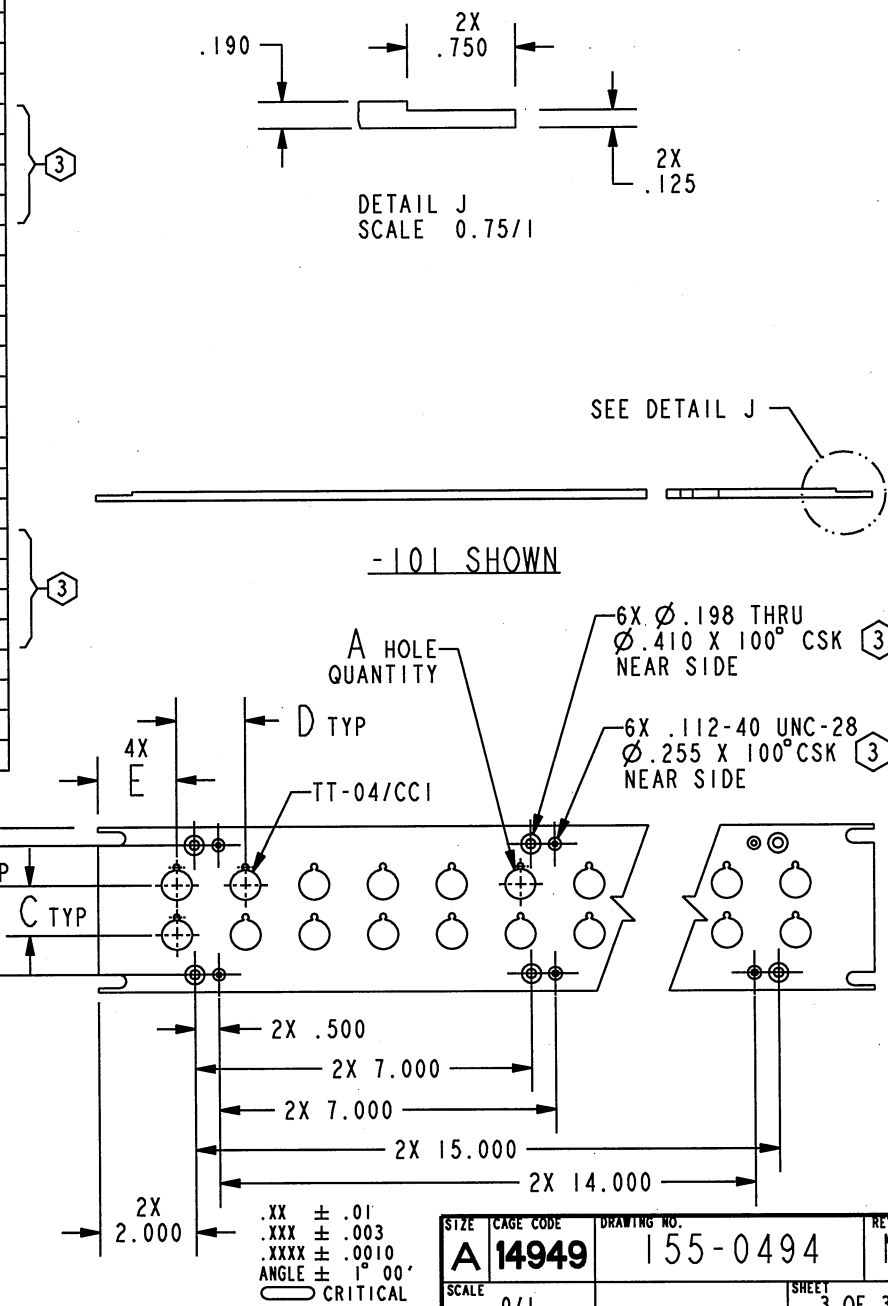
1. TABLE NUMBER 3 NON-STANDARD OPTIONS 2 THRU 8 ARE NOT SPECIFIED IN THE BILL OF MATERIALS

SIZE	CAGE CODE	DRAWING NO.	PART NUMBER	ITEM
A	14949	155-0494		M
SCALE	0/1		SHEET	2 OF 3

DASH NUMBER	A HOLE QUANTITY	C	D	E	F	G	H	SPECIAL FEATURES AND/OR REMARKS	MAKE FROM
-101	24	1.046	1.430	1.635	.836	.375	2.718		850-0000-2
-102	24	4.000	1.430	1.635	1.109	.375	6.218		850-0000-11
-103	24	2.750	1.430	1.635	.859	.375	4.468		850-0000-3
-104	24	4.500	1.380	1.910	.859	.375	6.218	SEE DETAIL J	850-0000-11
-105	20	4.500	1.500	2.750	.859	.375	6.218		850-0000-11
-106	20	4.718	1.500	2.750	1.050	.950	4.718		850-0000-13
-107	10	---	1.500	2.750	.817	.375	---	ONE ROW ONLY	850-0000-1
-108	12	---	1.430	1.635	.817	.375	---	ONE ROW ONLY	850-0000-1
-109	13	---	1.310	1.640	1.673	.375	---	ONE ROW ONLY	850-0000-2
-110	15	---	1.125	1.625	.817	.375	---	ONE ROW ONLY	850-0000-1
-111	24	1.062	1.430	1.635	.828	.375	2.718		850-0000-2
-112	32	3.000	1.062	1.535	1.609	.375	6.218		850-0000-11
-113	24	3.000	1.430	1.635	.809	.300	4.618		850-0000-3
-114	18	3.000	1.500	3.500	.809	.300	4.618		850-0000-3
-115	24	1.046	1.430	1.635	.836	.375	2.718		850-0000-9
-116	24	4.000	1.430	1.635	1.109	.375	6.218		850-0000-12
-117	24	2.750	1.430	1.635	.859	.375	4.468		850-0000-10
-118	24	4.500	1.380	1.910	.859	.375	6.218	SEE DETAIL J	850-0000-12
-119	20	4.500	1.500	2.750	.859	.375	6.218		850-0000-12
-120	20	4.718	1.500	2.750	1.050	.950	4.718		850-0000-14
-121	10	---	1.500	2.750	.817	.375	---	ONE ROW ONLY	850-0000-8
-122	12	---	1.430	1.635	.817	.375	---	ONE ROW ONLY	850-0000-8
-123	13	---	1.310	1.640	1.673	.375	---	ONE ROW ONLY	850-0000-9
-124	15	---	1.125	1.625	.817	.375	---	ONE ROW ONLY	850-0000-9
-125	24	1.062	1.430	1.635	.828	.375	2.718		850-0000-9
-126	32	3.000	1.062	1.535	1.609	.375	6.218		850-0000-12
-127	24	3.000	1.430	1.635	.809	.300	4.618		850-0000-10
-128	18	3.000	1.500	3.500	.809	.300	4.618		850-0000-10

3 ONLY 3 HOLES REQUIRED IF NO "H" DIMENSION

1. TFS-4



Mouser Electronics

Authorized Distributor

Click to View Pricing, Inventory, Delivery & Lifecycle Information:

[Cinch Connectivity Solutions:](#)

[JSHI-12/J94](#)