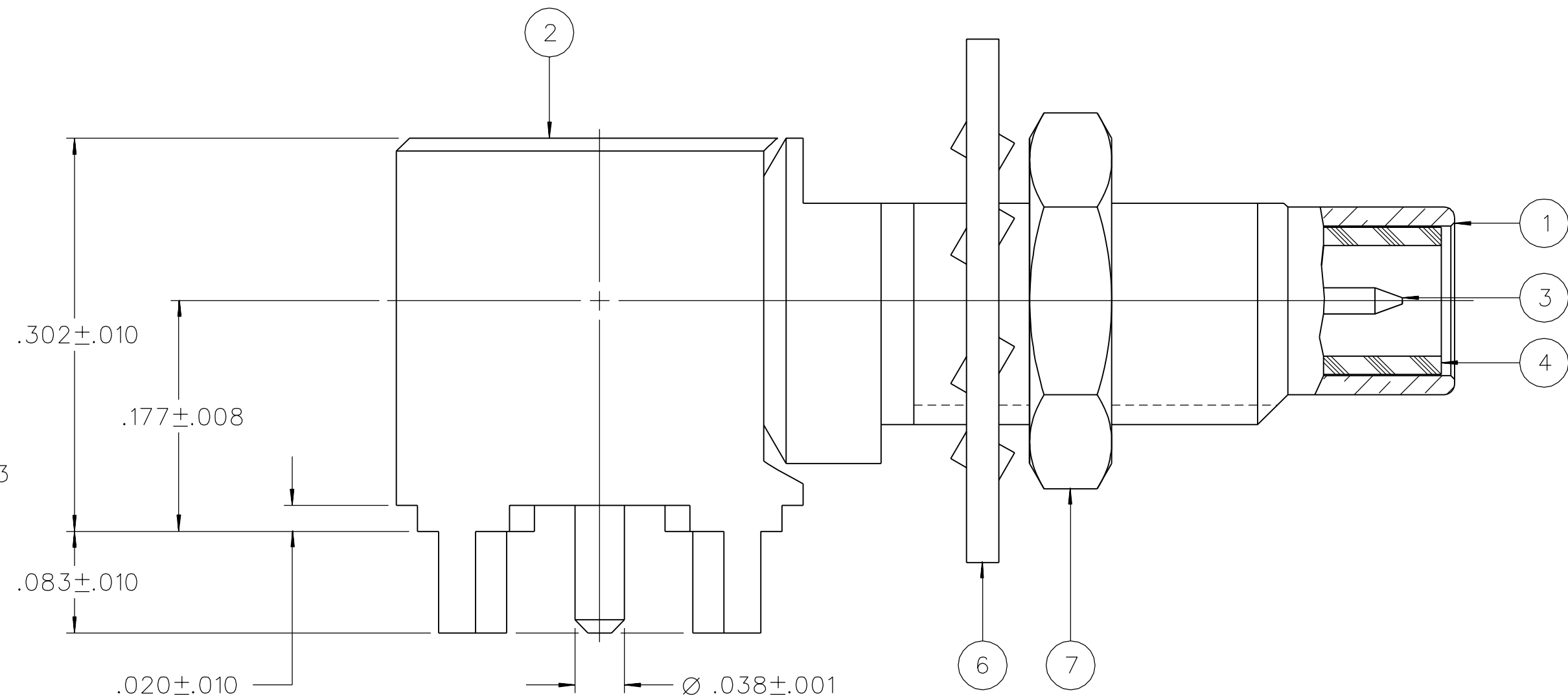


DRAWING NO.									
C - 131-6701-501/510									
0	REVISIONS								
ADDED: SHEET 2 OF 2									
2	4-2-91	MGR	RJB	HEB			4-12-91	ECO	40319
CHANGED: RF HIGH POT 4 AND 7 MHZ WAS 5 MHZ									
3	9-2-92	RH	TA	LS	RJB	PAH	9-22-92	ECO	41184
ADDED: P/N 131-6701-502									
3a	11-20-96	RH	RJB	BA			ECN	44408	
VERSION UPDATE									
3b	3-26-98	RH	RJB				ECN	44921	
UPDATED GRAPHICS									
ADDED: MATING INTERFACE NOTE									

* REVISION NUMBER FOLLOWED BY AN ALPHA *									
* CHARACTER INDICATES DRAWING CLARIFI *									
* CATION OR PART NUMBER ADDITION ONLY. *									

3c	9-12-02	RH	TA	RJB			ECN	47774	



Technical drawing of a circular feature. The drawing shows a circle with a center point marked by a cross. Two dimensions are indicated: a horizontal dimension of $\varnothing .195 \pm .003$ and a vertical dimension of $.178 \pm .003$. The dimensions are shown with arrows and dimension lines.

1. SPECIFICATIONS:

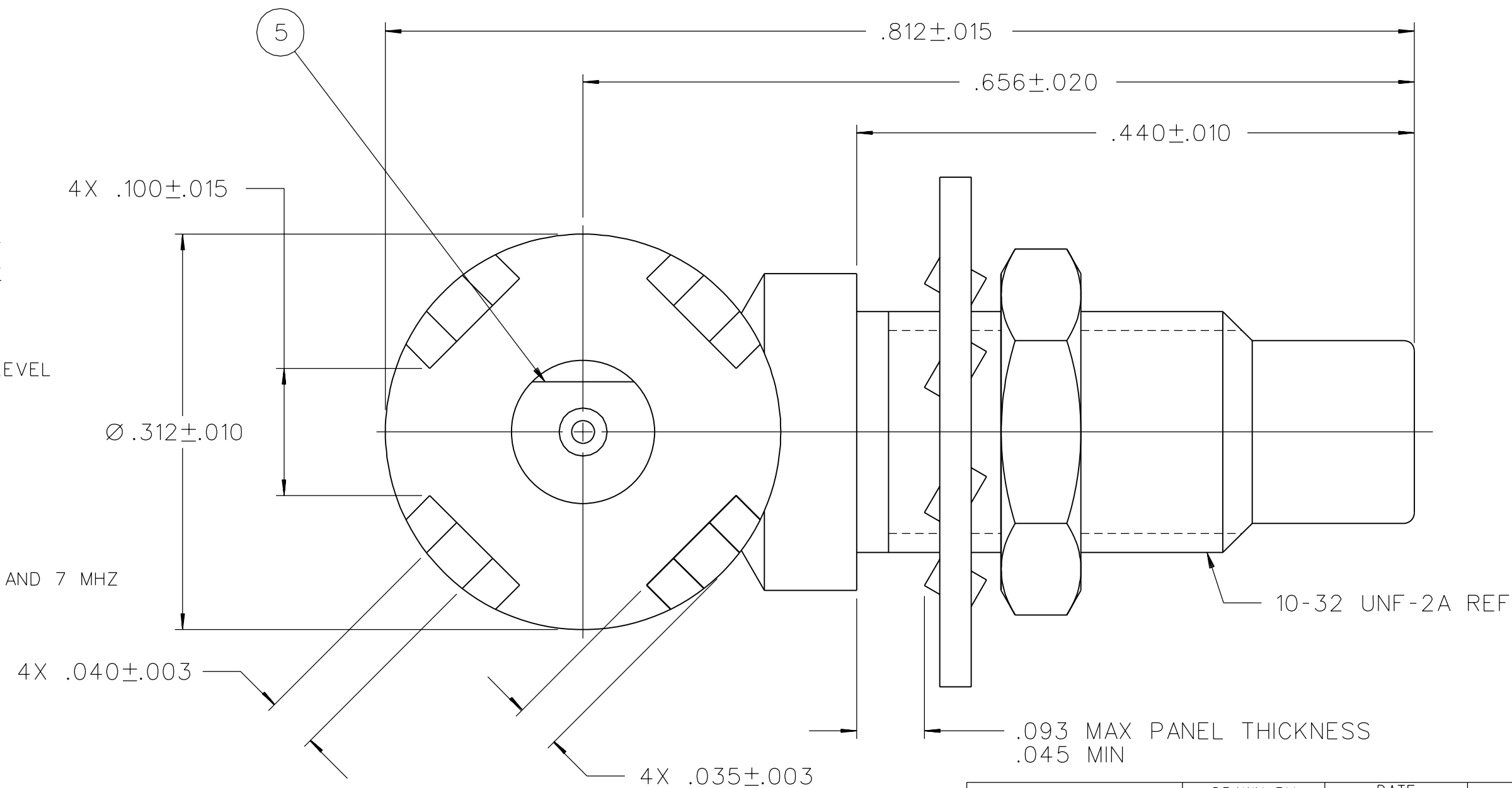
MOUNTING HOLE

MECHANICAL:


MATING INTERFACE: PER MIL-STD-348, SMC SERIES
ENGAGE/DISENGAGE TORQUE: 16 INCH-OUNCES MAX
MATING TORQUE: 30-50 INCH-OUNCES
COUPLING PROOF TORQUE: NOT APPLICABLE
COUPLING NUT RETENSION: NOT APPLICABLE
CONTACT RETENSION: 4 LBS MIN AXIAL FORCE
CABLE ACCEPTABILITY: NOT APPLICABLE
CABLE HEX CRIMP SIZE: NOT APPLICABLE
CABLE RETENTION: NOT APPLICABLE
DURABILITY: 500 CYCLES MIN

ENVIRONMENTAL:

MEETS OR EXCEEDS THE APPLICABLE PARAGRAPH OF MIL-PRF-39012)
THERMAL SHOCK: MIL-STD-202, METHOD 107, CONDITION B
OPERATING TEMPERATURE: -65 DEG C TO 165 DEG C
CORROSION: MIL-STD-202, METHOD 101, CONDITION B
SHOCK: MIL-STD-202, METHOD 213, CONDITION C
VIBRATION: MIL-STD-202, METHOD 204, CONDITION D



TOLERANCE UNLESS OTHERWISE SPECIFIED		DRAWN BY M.G. ROOT (E J)		DATE 4-2-91 (2-5-90)	
DECIMALS	mm	CHECKED BY	DATE		
.XX _____	_____				
.XXX _____	_____	APPROVED BY	DATE		
MATL _____					
FINISH _____		RELEASE DATE		9-22-92	
		U/M	INCH	SCALE	10:1

 EMERSON Network Power		Connectivity Solutions P.O. Box 1732 Waseca, MN 56093 1-800-247-8256	
TITLE JACK ASSEMBLY RA PC MOUNT BULKHEAD SMC			
SHEET 2 OF 2		DRAWING NO. C - 131-9701-501/510	

Mouser Electronics

Authorized Distributor

Click to View Pricing, Inventory, Delivery & Lifecycle Information:

[Cinch Connectivity Solutions:](#)

[131-6701-502](#)