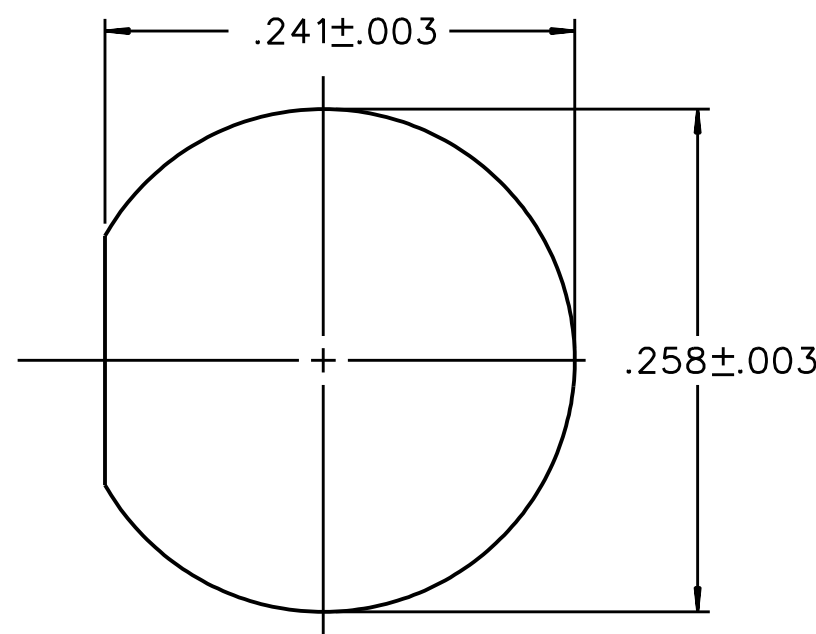
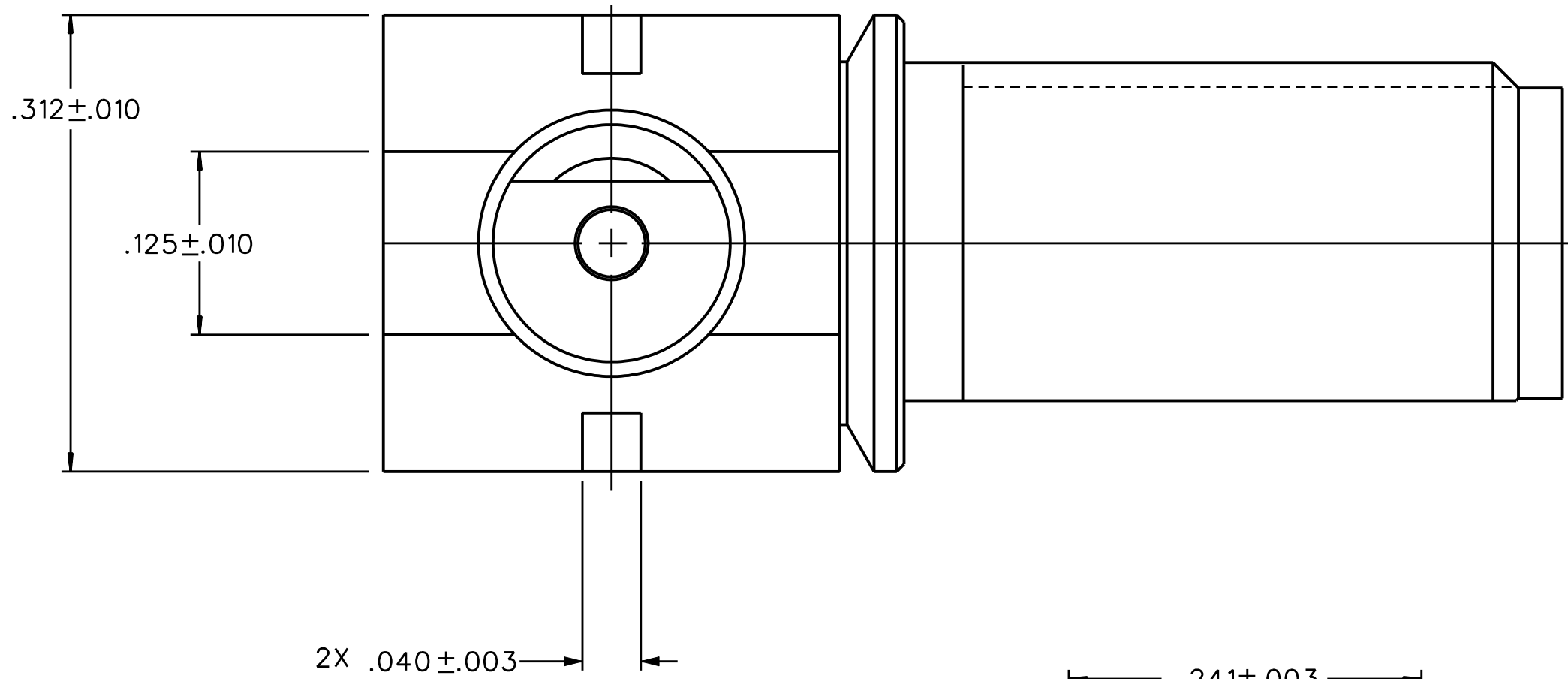
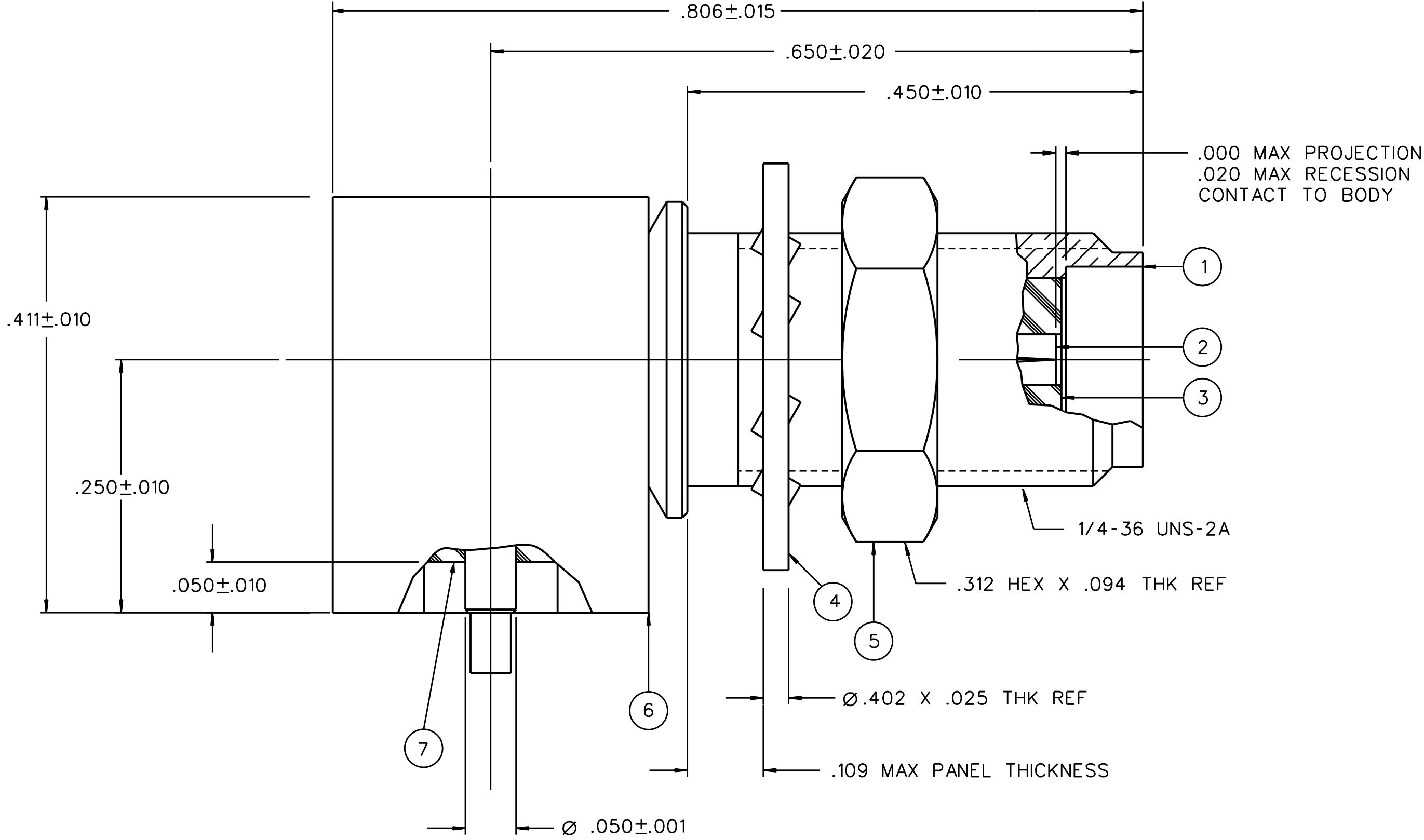
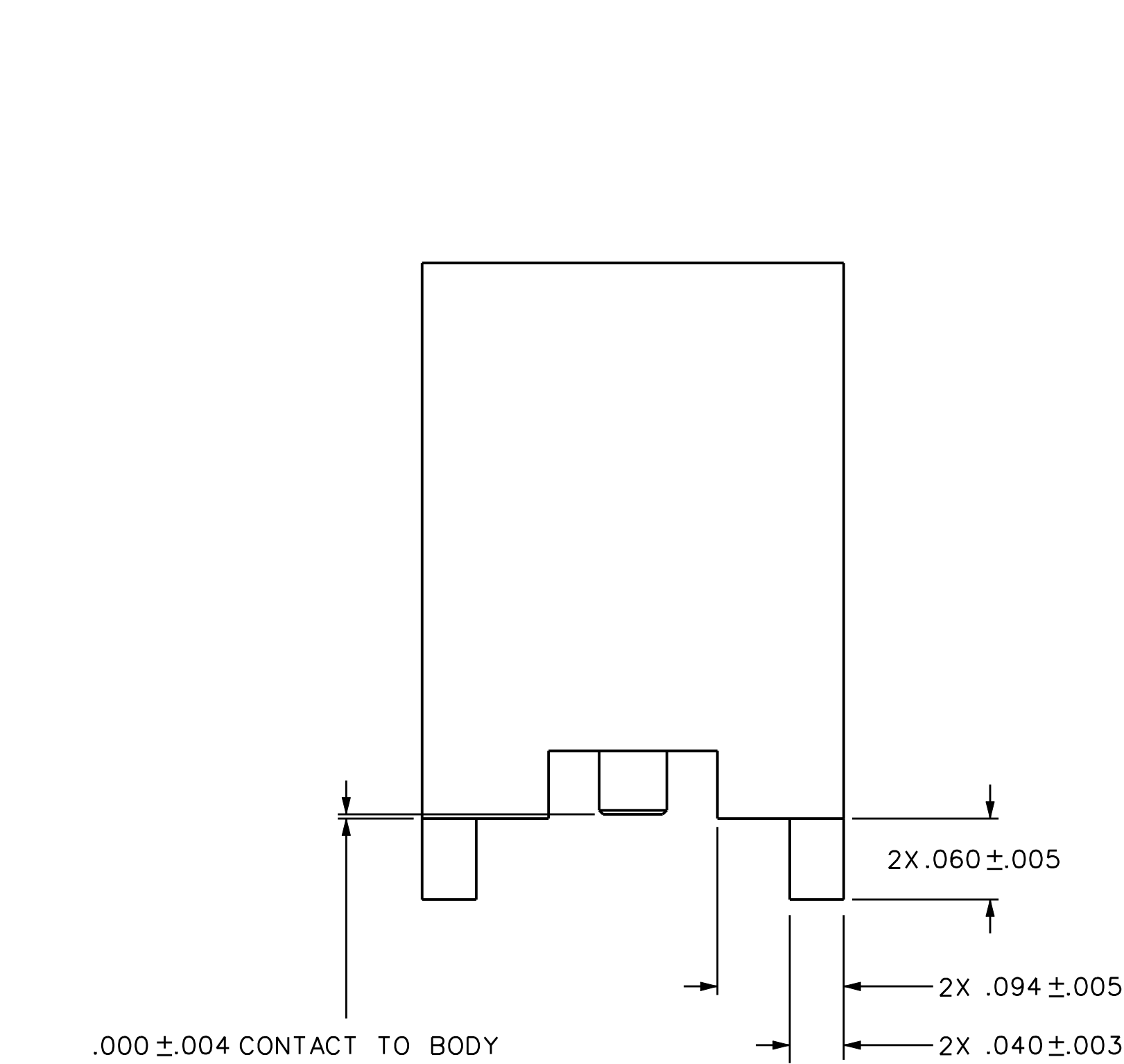


PART NUMBER	ITEM ① BODY	ITEM ② CONTACT (ONE PIECE)	ITEM ③ BODY INSULATOR	ITEM ④ LOCKWASHER	ITEM ⑤ NUT	ITEM ⑥ BASE	ITEM ⑦ BASE INSULATOR	PACKAGING
142-0711-511	BRASS GOLD PL .00001 MIN OVER NICKEL PL .0001 MIN OVER COPPER PL .00005 MIN	BERYLLIUM COPPER GOLD PL .00003 MIN OVER NICKEL PL .00005 MIN OVER COPPER PL .00005 MIN	TEFLON	BRONZE GOLD PL .00001 MIN OVER NICKEL PL .0001 MIN OVER COPPER PL .00005 MIN	BRASS GOLD PL .00001 MIN OVER NICKEL PL .0001 MIN OVER COPPER PL .00005 MIN	BRASS GOLD PL .00001 MIN OVER NICKEL PL .0001 MIN OVER COPPER PL .00005 MIN	TEFLON	25 PIECES PER BAG
142-0711-512	BRASS GOLD PL .00001 MIN OVER NICKEL PL .0001 MIN OVER COPPER PL .00005 MIN	BERYLLIUM COPPER GOLD PL .00003 MIN OVER NICKEL PL .00005 MIN OVER COPPER PL .00005 MIN	TEFLON	BRONZE GOLD PL .00001 MIN OVER NICKEL PL .0001 MIN OVER COPPER PL .00005 MIN	BRASS GOLD PL .00001 MIN OVER NICKEL PL .0001 MIN OVER COPPER PL .00005 MIN	BRASS GOLD PL .00001 MIN OVER NICKEL PL .0001 MIN OVER COPPER PL .00005 MIN	TEFLON	TAPE AND REEL 250 PIECES PER FIG 1



MOUNTING HOLE

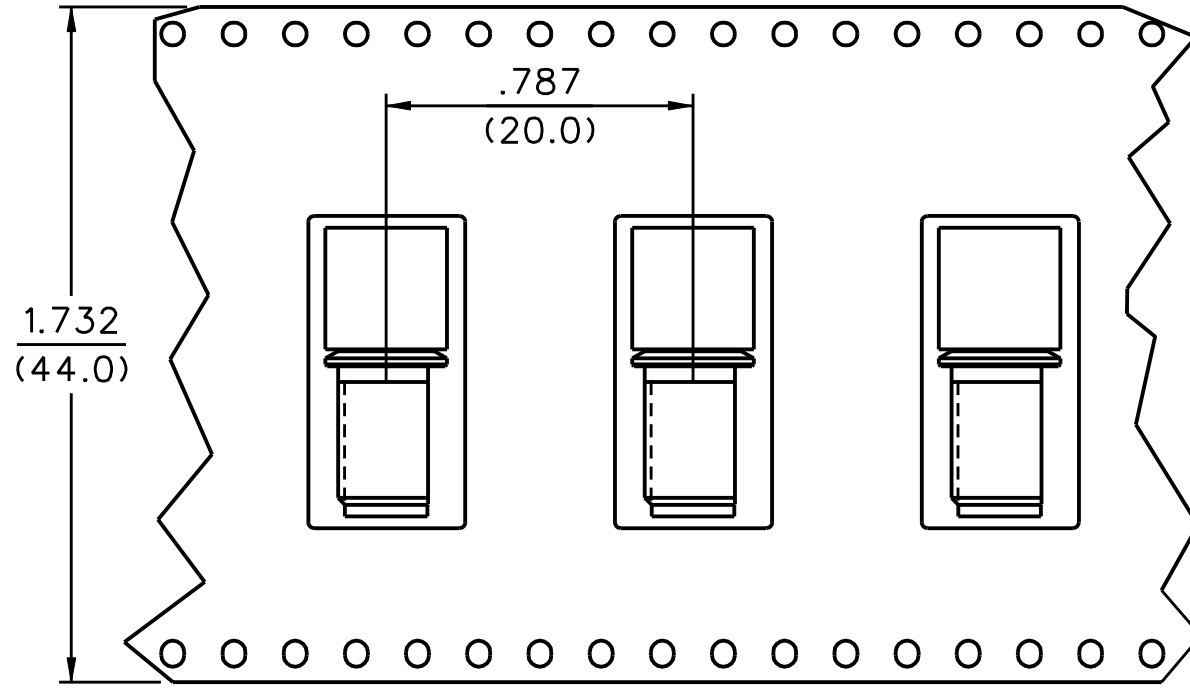
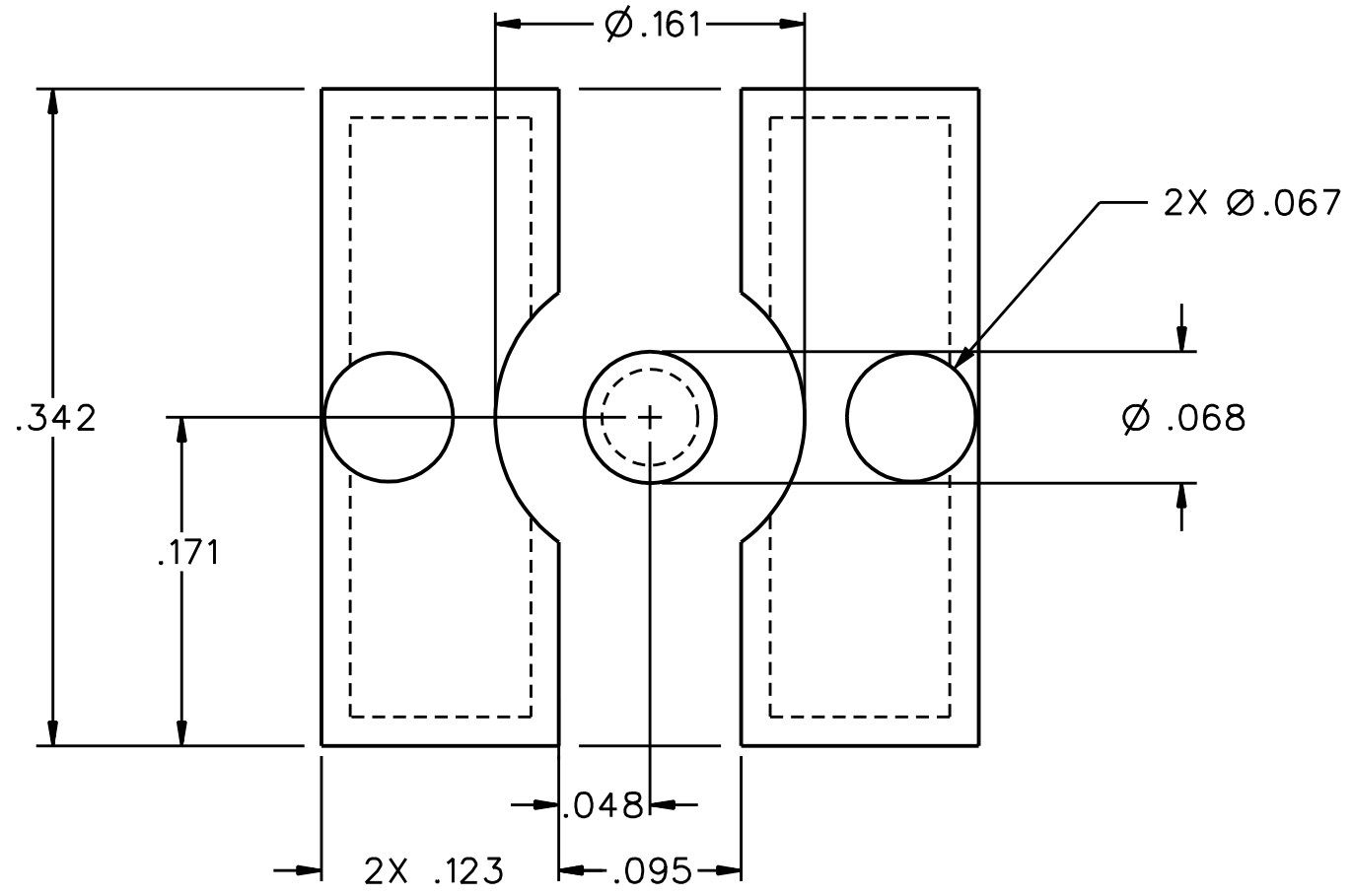


FIG 1

2:1

RECOMMENDED LAND PATTERN



\* NOTE: THIS PATTERN IS FOR REFERENCE ONLY.

NOTES:

1. SPECIFICATIONS:

IMPEDANCE: 50 OHMS  
FREQUENCY RANGE: 0-18 GHZ  
VSWR: NOT APPLICABLE  
WORKING VOLTAGE: 335 VRMS MAX AT SEA LEVEL  
DIELECTRIC WITHSTANDING VOLTAGE: 1000 VRMS MIN AT SEA LEVEL  
INSULATION RESISTANCE: 5000 MEGOHM MIN  
CONTACT RESISTANCE:  
CENTER CONTACT - INITIAL 3.0 MILLIOHM MAX, AFTER ENVIRONMENTAL 4.0 MILLIOHM MAX  
OUTER CONDUCTOR - INITIAL 2.0 MILLIOHM MAX AFTER ENVIRONMENTAL NOT APPLICABLE  
BRAID TO BODY - NOT APPLICABLE  
CORONA LEVEL: 250 VOLTS MIN AT 70,000 FEET  
INSERTION LOSS: NOT APPLICABLE  
RF LEAKAGE: NOT APPLICABLE  
RF HIGH POTENTIAL WITHSTANDING VOLTAGE: 670 VRMS AT 4 AND 7 MHZ MIN

MECHANICAL:

ENGAGE/DISENGAGE TORQUE: 2 INCH-POUNDS MAX  
MATING TORQUE: 7-10 INCH POUNDS  
COUPLING PROOF TORQUE: NOT APPLICABLE  
COUPLING NUT RETENTION: NOT APPLICABLE  
CONTACT RETENTION: 6 LBS MIN AXIAL FORCE  
CABLE ACCEPTABILITY: NOT APPLICABLE  
CABLE HEX CRIMP SIZE: NOT APPLICABLE  
CABLE RETENTION: NOT APPLICABLE  
DURABILITY: 500 CYCLES MIN

ENVIRONMENTAL:

(MEETS OR EXCEEDS THE APPLICABLE PARAGRAPH OF MIL-PRF-39012)  
THERMAL SHOCK: MIL-STD-202, METHOD 107, CONDITION B  
OPERATING TEMPERATURE: -65 DEG C TO 165 DEG C  
CORROSION: MIL-STD-202, METHOD 101, CONDITION B  
SHOCK: MIL-STD-202, METHOD 213, CONDITION I  
VIBRATION: MIL-STD-202, METHOD 204, CONDITION D  
MOISTURE RESISTANCE: MIL STD 202, METHOD 106


DRAWING NO. D - 142-0711-511/520									
0 REVISIONS									
ENGINEERING RELEASE									
1	9-3-99	R	H	B					ECN 46696
ADDED: BODY, BASE, LOCK PREFIXES. .094 WAS .063, .025 WAS .032, .109 WAS .125. UPDATED VIEWS.									
2	6-4-01	R	B						2-23-05 ECN 47951
ADD DIA .402 X .250 THK REF WAS .250 THK REF									
***** * REVISION NUMBER FOLLOWED BY AN ALPHA * * CHARACTER INDICATES DRAWING CLARIFI- * * CATION OR PART NUMBER ADDITION ONLY. * *****									
2a	3-20-08	A	S	R	M	J			3-28-08 ECN 51436
ADDED 142-0711-512 AND ADDED TAPE AND REEL DETAIL									
***** * REVISION NUMBER FOLLOWED BY AN ALPHA * * CHARACTER INDICATES DRAWING CLARIFI- * * CATION OR PART NUMBER ADDITION ONLY. * *****									
2b	7-25-11	W	F	B	U				7-25-11 ECO 53521

CUSTOMER DRAWING

THIS DRAWING TO BE INTERPRETED  
PER ANSII Y 14.5M - 1982

"μSTATION"

COMPANY CONFIDENTIAL

TOLERANCE UNLESS OTHERWISE SPECIFIED		DRAWN BY RJB	DATE 8-24-99	 <b>Connectivity Solutions</b> P.O. Box 1732 Waseca, MN 56093 1-800-247-8256
DECIMALS	mm	CHECKED BY	DATE	
.XX				TITLE
.XXX		APPROVED BY RJB	DATE 9-10-99	JACK ASSEMBLY RA PC SURFACE MOUNT, BULKHEAD, SMA
MATL		RELEASE DATE	9-10-99	SHEET
FINISH		U/M INCH	SCALE 10:1	DRAWING NO. D - 142-0711-511/520
				2 OF 2

# Mouser Electronics

Authorized Distributor

Click to View Pricing, Inventory, Delivery & Lifecycle Information:

[Cinch Connectivity Solutions:](#)

[142-0711-511](#)