



ELECTRICAL CHARACTERISTICS @ 25°C

TURNS RATIO

TX 1CT : 1

RX 1CT : 1

□CL @ 100kHz/100mVRMS

8mA DC BIAS 350μH MIN.

INS. LOSS

1MHz TO 100MHz -1.0 dB MAX

RET. LOSS (MIN)

1MHz-30MHz -18 dB

30MHz-60MHz -18+20LOG(F/30MHz) dB

60MHz-80MHz -12 dB

CROSS TALK (TX - RX)

500kHz-1MHz -70 dB MIN

10 MHz -50 dB MIN

30 MHz -45 dB MIN

50 MHz -40 dB MIN

100 MHz -35 dB MIN

CM TO CM REJ

100kHz-1MHz -70 dB MIN

10 MHz -47 dB MIN

30 MHz -42 dB MIN

60 MHz -37 dB MIN

100 MHz -30 dB MIN

CM TO DM REJ

100kHz-1MHz -70 dB MIN

10 MHz -60 dB MIN

30 MHz -50 dB MIN

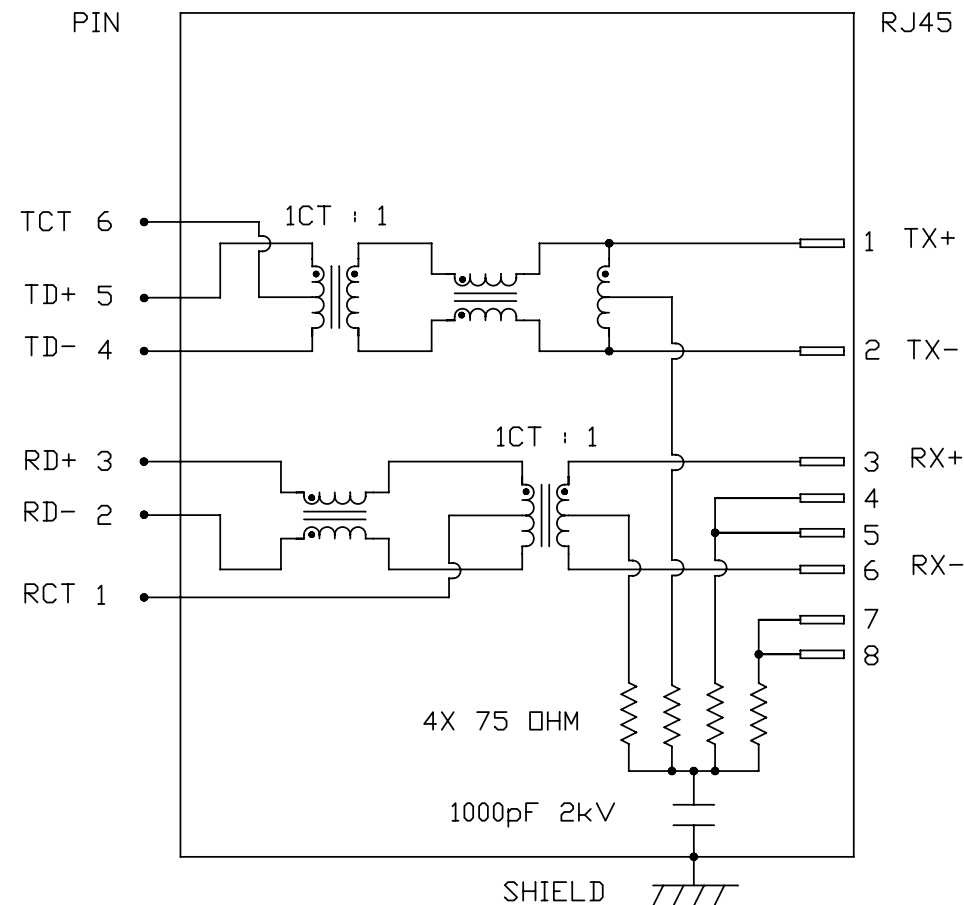
60 MHz -45 dB MIN



100 MHz -40 dB MIN

HIPOT (Isolation Voltage): 1500 Vrms or 2250VDC

100% OF PRODUCTION TESTED TO COMPLY WITH
IEEE 802.3 ISOLATION REQUIREMENTS.

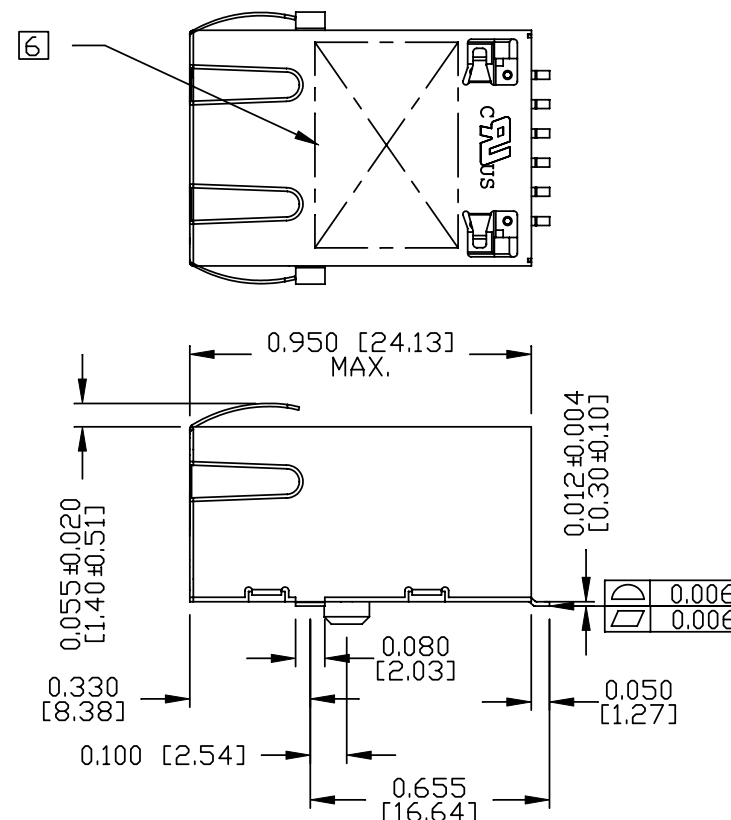
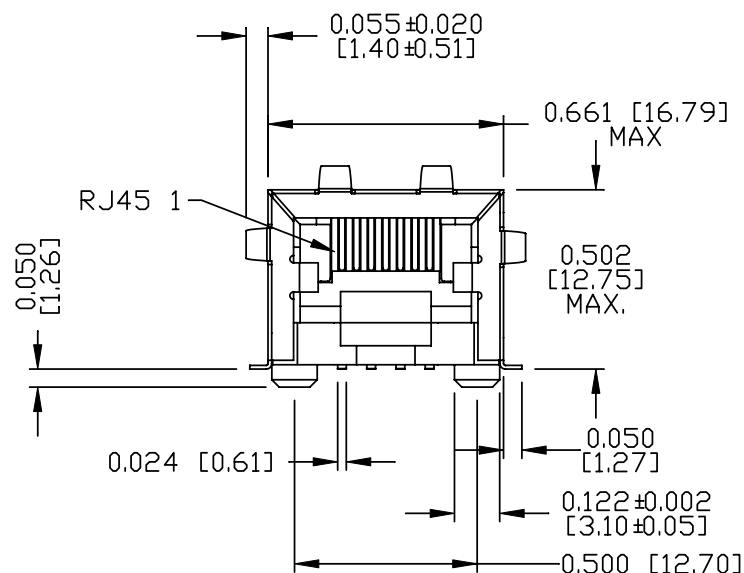
SCHEMATIC



ORIGINATED BY		DATE	TITLE	SMD MagJack ® (CM Termination) S811-1X1T-03-F PATENTED	PART NO. / DRAWING NO.		STANDARD DIM.		[] METRIC DIM. AS REFERENCE		 COMPONENTS FOR A CONNECTED PLANET	
CHOW WANCHUNG		2012-07-27			S8111X1T03-F		TOL. IN INCH		UNIT : INCH [mm]			REV. : C
DRAWN BY		DATE			FILE NAME		.X		SCALE : N/A			SIZE : A4
TAN QIGUANG		2012-07-27	S8111X1T03-F_C.DWG		.XX				PAGE : 2			
							.XXX					

THE INFORMATION CONTAINED HEREIN IS CONSIDERED "PROPRIETARY" TO BEL FUSE INC. AND SHALL NOT BE COPIED, REPRODUCED OR DISCLOSED WITHOUT THE WRITTEN APPROVAL OF BEL FUSE INC.

RoHS



NOTES:


1. PLASTIC HOUSING: THERMOPLASTIC PA & THERMOSET PHENOLIC. FLAMMABILITY RATING UL 94V-0
2. CONTACTS PLATING: 50 MICRO-INCH HARD GOLD PLATING OR EQUIVALENT.
3. PINS: TIN-COATED COPPER WIRE, 0.024 [0.6] X 0.012 [0.3] THK,
4. METAL SHIELD: NICKEL PLATED COPPER ALLOY.
5. JACK CAVITY CONFORMS TO FCC RULES AND REGULATIONS.

[6] MARK PART WITH MFG LOGO, MFG NAME, PART NUMBER, DATE CODE AND PATENTED.

7. THE PRODUCT IS RoHS COMPLIANT.

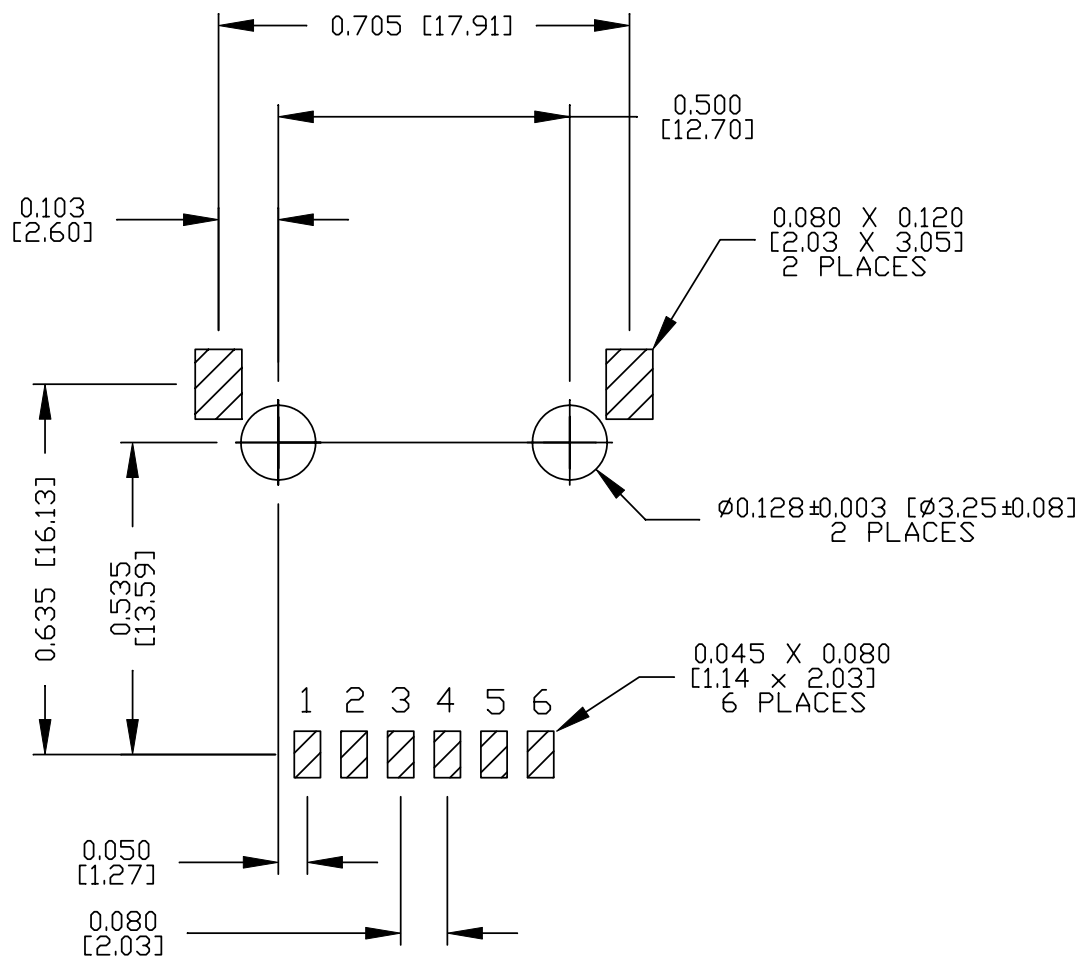
8. THE PRODUCT IS PATENT PRODUCT. THE PATENT NUMBER IS U.S. PAT. 5,736,910.



UL USUL RECOGNIZED - FILE #E196366 AND E169987.

ORIGINATED BY	DATE	TITLE	PART NO. / DRAWING NO.	STANDARD DIM. TOL. IN INCH	[] METRIC DIM. AS REFERENCE	
ANTON LIAO	2012-07-27	SMD MagJack ® (CM Termination)	S8111X1T03-F	.X	UNIT : INCH [mm]	
DRAWN BY	DATE	S811-1X1T-03-F	FILE NAME	.XX	SCALE : N/A	
HE ZHEN	2012-07-27	PATENTED	S8111X1T03-F_C.DWG	.XXX ±0.010	SIZE : A4	
PAGE : 3						



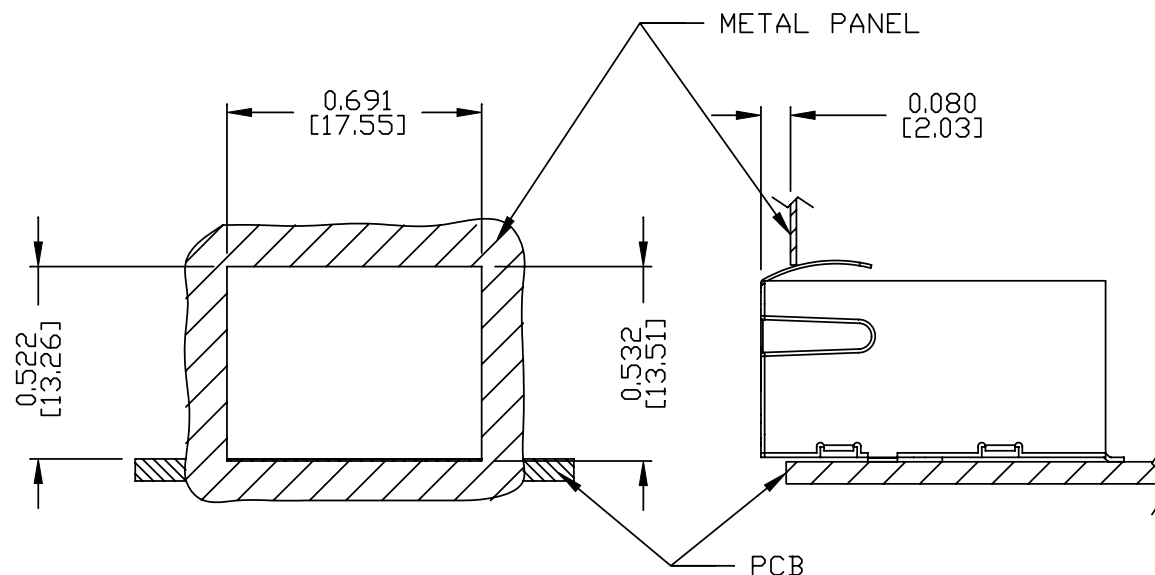
RECOMMENDED PCB FOOTPRINT
COMPONENT SIDE VIEW



ORIGINATED BY ANTON LIAO	DATE 2012-07-27	TITLE SMD MagJack ® (CM Termination) S811-1X1T-03-F PATENTED	PART NO. / DRAWING NO. S8111X1T03-F	STANDARD DIM. TOL. IN INCH		[] METRIC DIM. AS REFERENCE		 COMPONENTS FOR A CONNECTED PLANET
DRAWN BY HE ZHEN	DATE 2012-07-27		FILE NAME S8111X1T03-F_C.DWG	.X		UNIT : INCH [mm]	REV. : C	
				.XX		SCALE : N/A	SIZE : A4	
				.XXX	±0.004		PAGE : 4	



SUGGESTED PANEL OPENING



NOTES:

THE DISTANCE OF PANEL INSIDE SURFACE RELATIVE TO FRONT
SURFACE OF PART IS ONLY A SUGGESTION.
IN CASE THIS DISTANCE IS DIFFERENT, THE REQUIRED
PANEL OPENING DIMENSIONS CHANGE ACCORDINGLY.

ORIGINATED BY	DATE	TITLE	PART NO. / DRAWING NO.	STANDARD DIM. TOL. IN INCH	[] METRIC DIM. AS REFERENCE	
ANTON LIAO	2012-07-27	SMD MagJack ® (CM Termination)	S8111X1T03-F	.X	UNIT : INCH [mm]	REV. : C
DRAWN BY	DATE		FILE NAME	.XX	SCALE : N/A	SIZE : A4
HE ZHEN	2012-07-27	S811-1X1T-03-F PATENTED	S8111X1T03-F_C.DWG	.XXX	±0.004	PAGE : 5

Mouser Electronics

Authorized Distributor

Click to View Pricing, Inventory, Delivery & Lifecycle Information:

Bel:

[S811-1X1T-03-F](#)