

THE INFORMATION CONTAINED HEREIN IS CONSIDERED 'PROPRIETARY' TO BEL FUSE INC. AND SHALL NOT BE COPIED, REPRODUCED OR DISCLOSED WITHOUT THE WRITTEN APPROVAL OF BEL FUSE INC.

LED1 POLARITY			LED2 POLARITY		
PIN 13	PIN 14	COLOR	PIN 15	PIN 16	COLOR
			+	-	ORANGE
-	+	YELLOW	-	+	GREEN

RoHS  
2002/95/EC

RJ45

# ELECTRICAL CHARACTERISTICS @ 25°C

## URNS RATIO

TP1	1CT : 1CT ±2%
TP2	1CT : 1CT ±2%
TP3	1CT : 1CT ±2%
TP4	1CT : 1CT ±2%

## OCL @ 100kHz/100mVRMS

8mA DC BIAS 350μH MIN.

## INS. LOSS

0.1MHz TO 1MHz	-1.1 dB MAX
1MHz TO 65MHz	-0.5 dB MAX
65MHz TO 100MHz	-0.8 dB MAX
100MHz TO 125MHz	-1.2 dB MAX

## RET. LOSS (MIN) @ 100 OHMS ±15%

0.5MHz-40MHz	-18 dB
40MHz-100MHz	-12+20LOG(f/80MHz) dB

## CM TO CM REJ

100kHz - 100MHz	-30 dB MIN
-----------------	------------

## CM TO DM REJ

100kHz - 100MHz	-35 dB MIN
-----------------	------------

## HIPOT (Isolation Voltage):

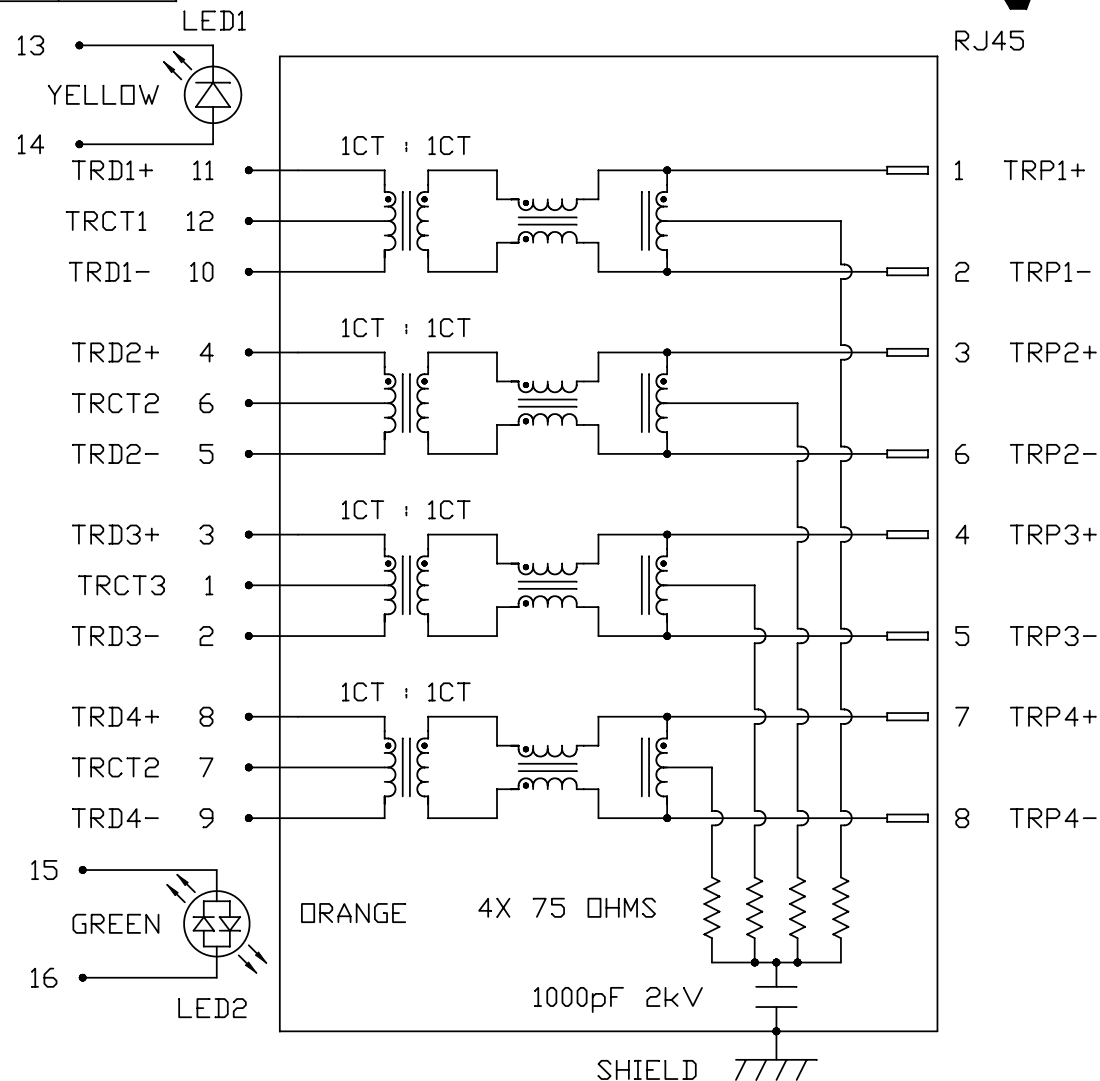
1500 Vrms  
100% OF PRODUCTION TESTED TO COMPLY WITH  
IEEE 802.3 ISOLATION REQUIREMENTS.

## LED 1

VF (FORWARD VOLTAGE)	IF=20mA	YELLOW	2.1V TYP.
λ D (DOMINANT WAVELENGTH)	IF=20mA	YELLOW	590nm TYP.

## LED 2

VF (FORWARD VOLTAGE)	IF=20mA	GREEN	2.2V TYP.
		ORANGE	2.0V TYP.
λ D (DOMINANT WAVELENGTH)	IF=20mA	GREEN	565nm TYP.
		ORANGE	610nm TYP.

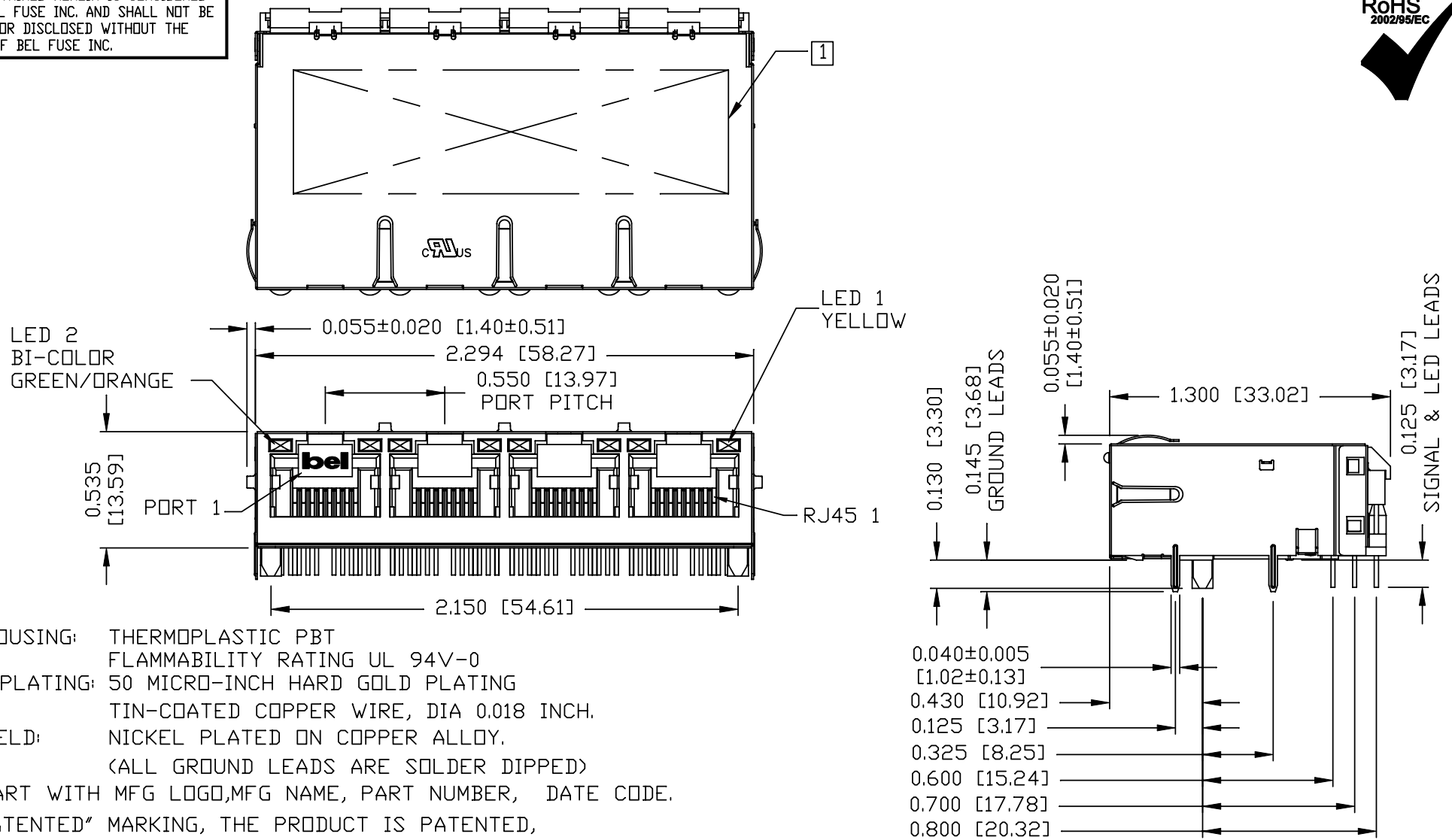


ORIGINATED BY	DATE	TITLE	PART NO. / DRAWING NO.	STANDARD DIM.	[ ] METRIC DIM. AS REFERENCE
CHOW WANGCHUNG	06-16-09	1X4 gigabit MagJack® (12 cores,Tab Up)	08261X4T23-F	TOL. IN INCH	UNIT : INCH [mm] REV. : F
DRAWN BY	DATE	0826-1X4T-23-F	FILE NAME	.X	SCALE : N/A SIZE : A4
LI YONGFENG	06-16-09	PATENTED	08261X4T23-F_F.DWG	.XX	PAGE : 2
				.XXX	

**bel**  
COMPONENTS FOR A  
CONNECTED  
PLANET

THE INFORMATION CONTAINED HEREIN IS CONSIDERED "PROPRIETARY" TO BEL FUSE INC. AND SHALL NOT BE COPIED, REPRODUCED OR DISCLOSED WITHOUT THE WRITTEN APPROVAL OF BEL FUSE INC.

RoHS  
2002/95/EC



#### NOTES:

PLASTIC HOUSING: THERMOPLASTIC PBT  
FLAMMABILITY RATING UL 94V-0  
CONTACTS PLATING: 50 MICRO-INCH HARD GOLD PLATING  
PINS: TIN-COATED COPPER WIRE, DIA 0.018 INCH.  
METAL SHIELD: NICKEL PLATED ON COPPER ALLOY.  
(ALL GROUND LEADS ARE SOLDER DIPPED)

[1] MARK PART WITH MFG LOGO, MFG NAME, PART NUMBER, DATE CODE.

AND "PATENTED" MARKING, THE PRODUCT IS PATENTED,

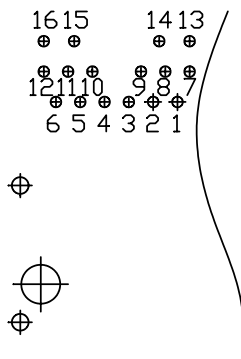
THE PATENTED NUMBER IS U.S. PAT. 5,736,910.

JACK CAVITY CONFORMS TO FCC RULES AND REGULATIONS.

CULUSUL RECOGNIZED - FILE #E196366 AND E169987.  
RoHS COMPLIANCE, PER EU DIRECTIVE 2002/95/EC.

ORIGINATED BY	DATE	TITLE	PART NO. / DRAWING NO.	STANDARD DIM. TOL. IN INCH	[ ] METRIC DIM. AS REFERENCE	
ZX HUANG	06-16-09	1x4 gigabit MagJack® (12 cores, Tab Up) 0826-1X4T-23-F PATENTED	08261X4T23-F		UNIT : INCH [mm]	REV. : F
DRAWN BY	DATE			.X	SCALE : N/A	SIZE : A4
BL CHEN	06-16-09			.XX		PAGE : 3
				.XXX	±0.010	

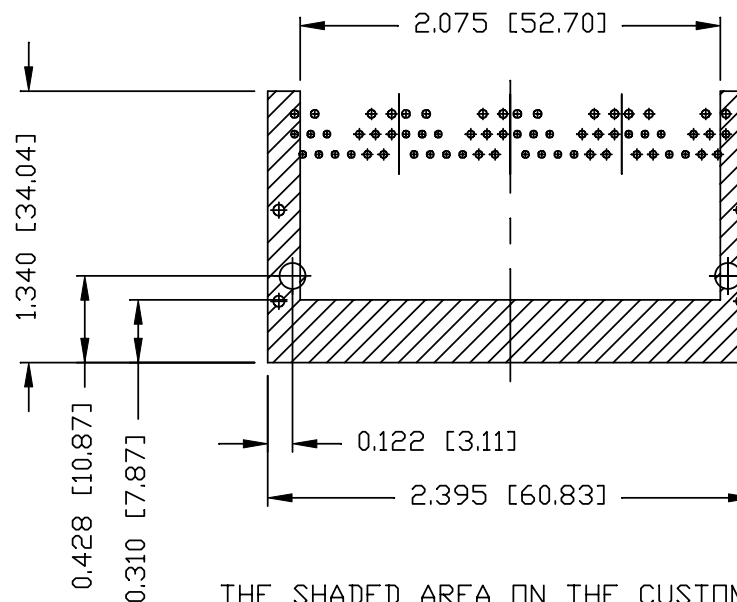
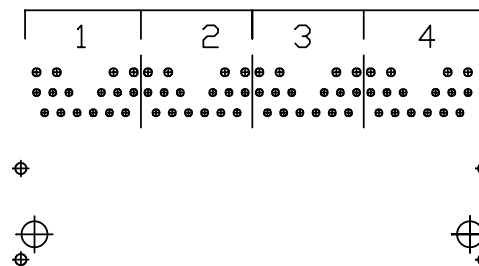
THE INFORMATION CONTAINED HEREIN IS CONSIDERED  
 "PROPRIETARY" TO BEL FUSE INC. AND SHALL NOT BE  
 COPIED, REPRODUCED OR DISCLOSED WITHOUT THE  
 WRITTEN APPROVAL OF BEL FUSE INC.



PIN-OUT INFORMATION  
 (COMPONENT SIDE VIEW)

12	TRCT1		
11	TRD1+		
10	TRD1-		
9	TRD4-		
8	TRD4+		
7	TRCT2		
6	TRCT2		
5	TRD2-		
4	TRD2+	16	ORG (-) GRN (+)
3	TRD3+	15	ORG (+) GRN (-)
2	TRD3-	14	YELLOW (+)
1	TRCT3	13	YELLOW (-)

PORT ASSIGNMENT  
 (COMPONENT SIDE VIEW)

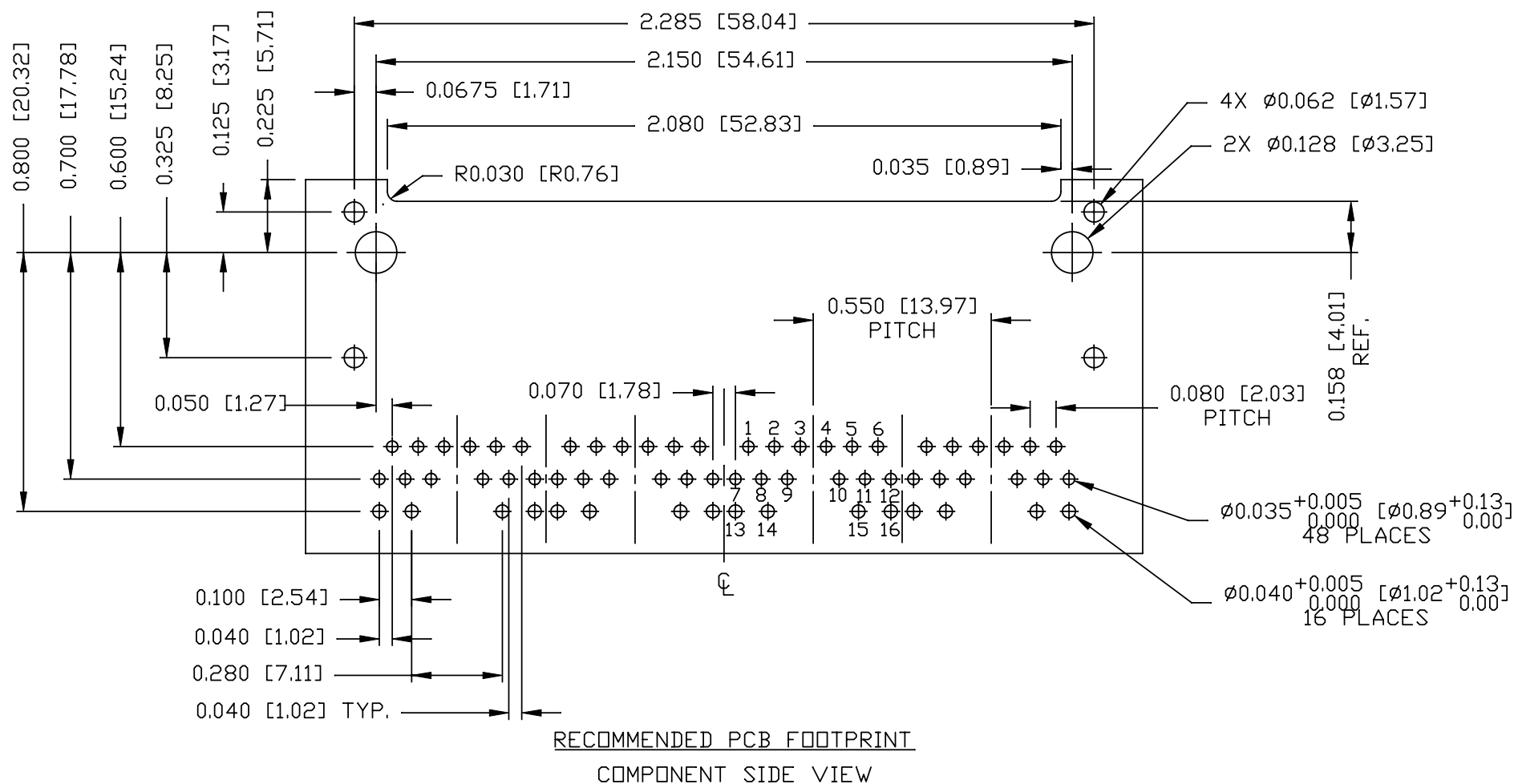




THE SHADED AREA ON THE CUSTOMER BOARD ARE  
 RECOMMENDED TO BE CLEAR OFF ANY VIA HOLE OR  
 COMPONENT PAD.

ORIGINATED BY	DATE	TITLE	PART NO. / DRAWING NO.	STANDARD DIM.		[ ] METRIC DIM. AS REFERENCE	
				TOL. IN INCH		UNIT : INCH [mm]	REV. : F
ZX HUANG	06-16-09	1X4 gigabit MagJack® (12 cores,Tab Up) 0826-1X4T-23-F PATENTED	08261X4T23-F	.X		SCALE : N/A	SIZE : A4
DRAWN BY	DATE			.XX			PAGE : 4
BL CHEN	06-16-09			.XXX	±0.004		



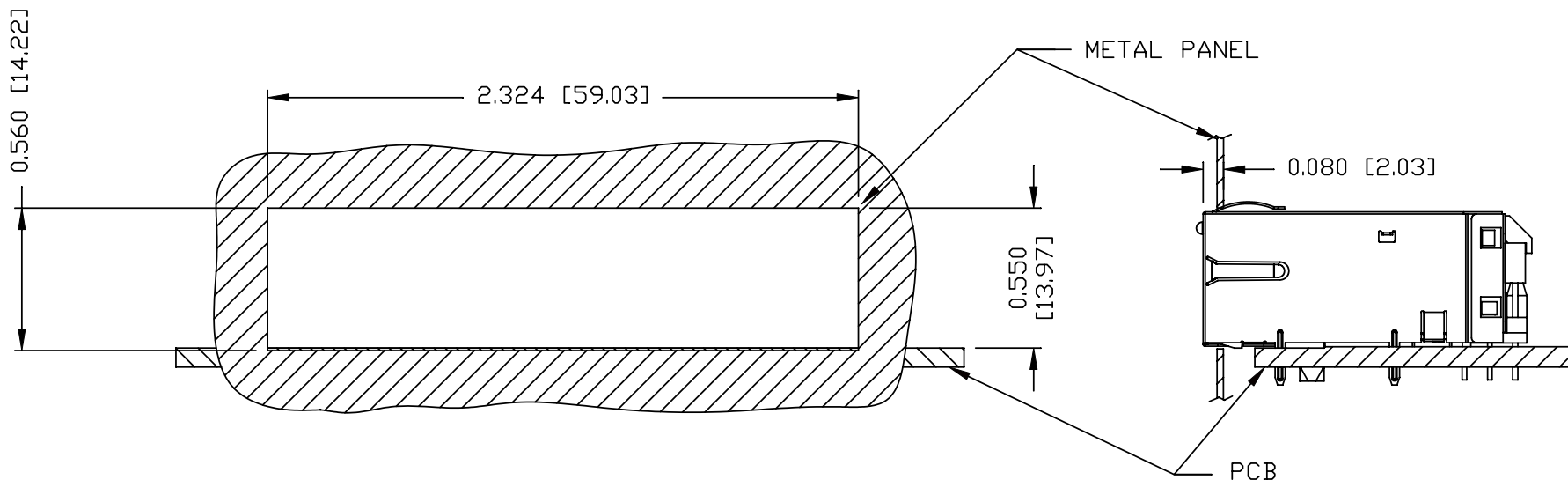
**RoHS**  
2002/95/EC



ORIGINATED BY	DATE	TITLE 1X4 gigabit MagJack® (12 cores,Tab Up) 0826-1X4T-23-F PATENTED	PART NO. / DRAWING NO.	STANDARD DIM.		[ ] METRIC DIM. AS REFERENCE		 COMPONENTS FOR A CONNECTED PLANET
ZX HUANG	06-16-09		08261X4T23-F	TOL. IN INCH		UNIT : INCH [mm] REV. : F		
DRAWN BY	DATE		FILE NAME	.X		SCALE : N/A SIZE : A4		
BL CHEN	06-16-09		08261X4T23-F_F.DWG	.XX		PAGE : 5		
				.XXX		±0.004		



# SUGGESTED PANEL OPENING



## NOTES:

THE DISTANCE OF PANEL INSIDE SURFACE RELATIVE TO FRONT SURFACE OF PART IS ONLY A SUGGESTION. IN CASE THIS DISTANCE IS DIFFERENT, THE REQUIRED PANEL OPENING DIMENSIONS CHANGE ACCORDINGLY.

## PACKING INFORMATION

PACKING TRAY : 0200-9999-B4 (TOP)  
0200-9999-B5 (BOTTOM)

PACKING QUANTITY : 24 PCS FINISHED GOODS PER TRAY  
10 TRAYS (240 PCS FINISHED GOODS) PER CARTON BOX

NOTE : CARDBOARDS ARE PLACED BETWEEN LAYERS OF PACKING TRAY INSIDE CARTON BOX  
(INCLUDE THE UPPERMOST AND LOWERMOST TRAY)

ORIGINATED BY	DATE	TITLE	PART NO. / DRAWING NO.	STANDARD DIM.		[ ] METRIC DIM. AS REFERENCE	
				TOL. IN INCH		UNIT : INCH [mm]	REV. : F
ZX HUANG	06-16-09	1X4 glgabit MagJack® (12 cores,Tab Up) 0826-1X4T-23-F PATENTED	08261X4T23-F  FILE NAME 08261X4T23-F_F.DWG	.X		SCALE : N/A	SIZE : A4
DRAWN BY	DATE			.XX			PAGE : 6
BL CHEN	06-16-09			.XXX	±0.004		

# Mouser Electronics

Authorized Distributor

Click to View Pricing, Inventory, Delivery & Lifecycle Information:

Bel:

[0826-1X4T-23-F](#)