

MTC 6



Rugged, X86-based Vehicle Mount Terminal Series

- 10, 12 or 15 inch Color-TFT
- Resistive touchscreen
- Wi-Fi with integrated diversity antenna
- Extreme temperature range
- Fully rugged
- Optimum protection against shock and vibration

Introduction

The MTC 6 is a rugged vehicle mount terminal that increases efficiency in logistics – in the distribution center, port, warehouse, and even in the deep-freeze area. The integrated Advantech-DLoG antenna solution enables Wi-Fi diversity in excellence and hence improves reliable data transmission even under complex receive and transmit conditions. Therefore the Advantech-DLoG terminals are a choice for the logistics industry.

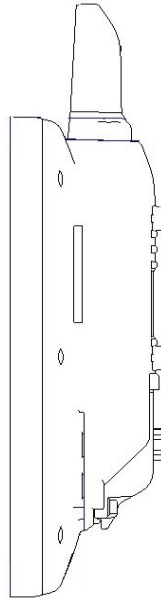
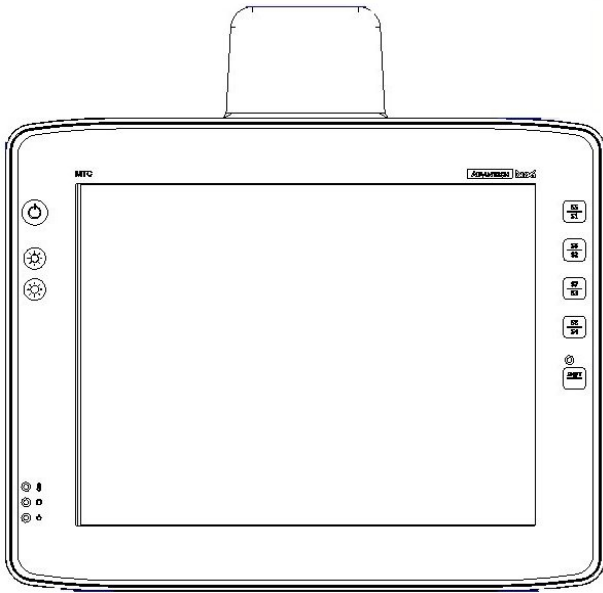
Specifications

System	CPUs	AMD Dual Core G-T40E 1.0 GHz, 2 GB RAM AMD G-T40R 1.0 GHz, 2 GB RAM Intel® Atom® Z510 1.1 GHz, 1 GB RAM
	Storage	CFast, starting at 4 GB
Housing		Completely sealed, fanless design Coated aluminium
Dimensions/Weight (without antenna, accessories)	MTC 6/10	285 mm x 229 mm x 78 mm, 3 kg / 11.2 in x 9.0 in x 3.1 in, 6.6 lbs
	MTC 6/12	325 mm x 258 mm x 79 mm, 3.5 kg / 12.8 in x 10.1 in x 3.1 in, 7.7 lbs
	MTC 6/15	388 mm x 305 mm x 82 mm, 4.9 kg / 15.3 in x 12.0 in x 3.2 in, 10.9 lbs
Display	MTC 6/10	10.4" Color-TFT, SVGA 800 x 600 or XGA 1024 x 768
	MTC 6/12	12.1" Color-TFT, XGA 1024 x 768
	MTC 6/15	15" Color-TFT, XGA 1024 x 768
Front Keys		8 front keys, incl. 4 configurable function keys
Touchscreen		Resistive touchscreen
Software	Operating Systems	MS® Windows® XP Professional, XP Embedded, WES 7, Linux WIN 7 Professional with AMD CPUs
	Emulations (third-party)	VT100, VT220, IBM 5250, TN 3270, Citrix ICA Client®, RDP Client
Communication	Wi-Fi	IEEE 802.11 a/b/g/n with diversity antenna, optional
	LAN	RJ45 10/100/1000 Mbps
Interfaces	Serial	1 x RS-232, COM 1 optional 5 V
	USB	3 x USB, incl. 1 x Service USB
Audio / Voice		Speaker integrated
Power Supply	Advantech-DLoG Voice Kit	Speaker & microphone via handset; optional; available for MTC 6/10 and MTC 6/12
		12/24 VDC or 24/48 VDC, galvanically isolated Deep voltage drops can be bridged 20 s
Environmental	IP Protection Class	IP66
	Operating temperature	-30 to +50 °C / -22 to +122 °F
	Relative humidity	10 to 90% at 40 °C, non condensing
	Shock/Vibration	Class 5M3 according DIN EN 60721-3-5 MIL-STD 810F (US Highway Truck)
Approvals	Certifications	CE/FCC Class B and TELEC Japan with AMD CPU CE/FCC Class B, CCC China, BSMI / NCC Taiwan and TELEC Japan with Intel CPU
	TOS (Port)	Navis, SPARCS 3.7 and N4 (Port Terminal Operating System) under Windows® XP Jade Master Terminal Vehicle Mounted Application under Windows® XP

Data sheet V5.32 © by DLoG GmbH 06/2014. Information is subject to change. Product names are in most cases also registered trademarks and are thus subject to law

MTC 6

Dimensions

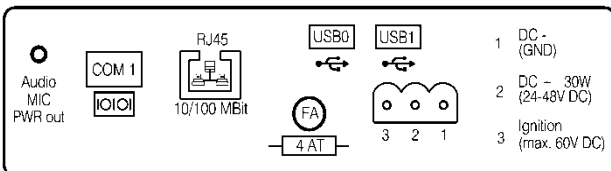


MTC 6/10:
10 inch display,
Dimensions without antenna in mm
W: 285 x H: 230 x D: 78

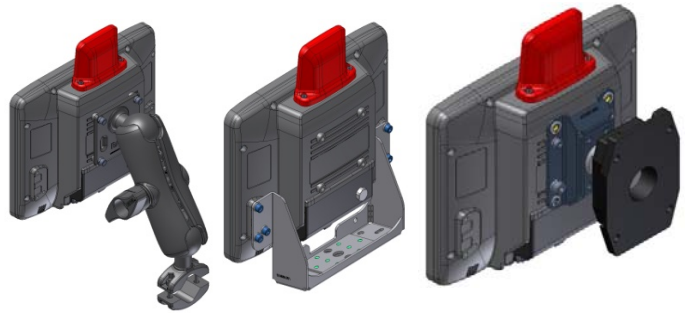
MTC 6/12:
12 inch display,
Dimensions without antenna in mm
W: 325 x H: 258 x D: 79

MTC 6/15:
15 inch display,
Dimensions without antenna in mm
W: 388 x H: 305 x D: 82

Connectors



Mounting Variants (Selection)



Advantech-DLoG Partner Contact

Accessories/Options

- Scanners and scanner mountings
- Keyboards and keyboard mountings
- Terminal mountings (wide range of mounting brackets, RAM solutions etc.)
- USB Stick
- USB Recovery Stick
- External CD/DVD ROM drive
- Mouse
- Voice Kit (available for MTC 6/10 and MTC 6/12)
- Remote Wi-Fi Antenna (for mounting on vehicle roof)

Mouser Electronics

Authorized Distributor

Click to View Pricing, Inventory, Delivery & Lifecycle Information:

[Advantech:](#)

[MTC6-0-0WRSJEEB001](#) [MTC6-2-0WRSJEEB001](#)