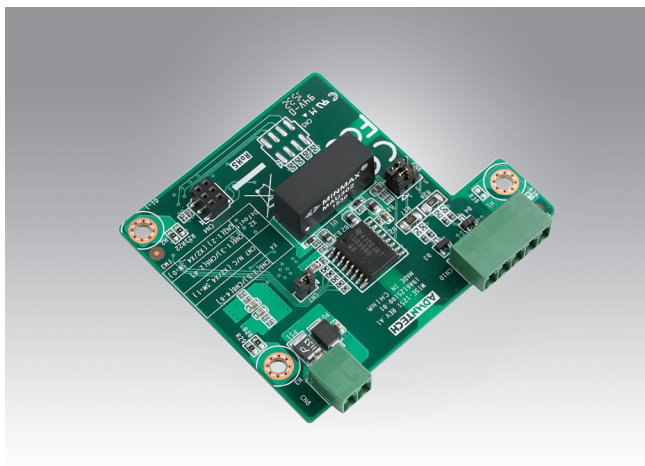


WISE-1251

RS422/485 I/O Board



CE FCC 

Specifications

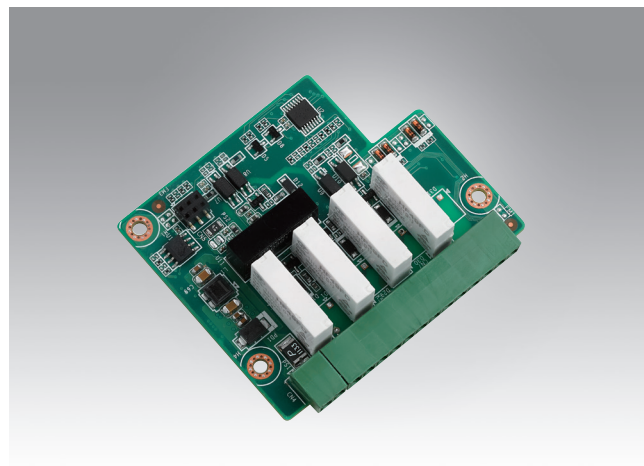
Input	RS-485 (4-wire) or RS-422 (2-wire)
Output	RS-485 (4-wire) or RS-422 (2-wire)
Interface Connectors	2 x plug-in terminal blocks (RS422/485)
Isolation Protection	3500 V _{DC}
Speed Modes (bps)	1,200, 2,400, 4,800, 9,600, 19.2 k, 38.4 k, 57.6 k, 115.2 k
EEPROM	32KB
Power Requirement	3.3V & 5V DC
Operating temperature	-40 to 85° C
Storage Temperature	-40 ~ 85° C
Operating Humidity	5 ~ 95% RH

Ordering Information

P/N	Description
WISE-1251W0-0000E	RS422/485 I/O node board
WISE-1021WR-1100E	WSN IP Node, IEEE.802.15.4e Linear/Dust Mesh network with TI MSP430 MCU WISE-DB1021

WISE-1252

4-ch Relay and DIO I/O Board



CE FCC 

Specifications

Relay output	4ch
Contact Rating (Resistive)	250V _{AC} @ 0.3A, 30V _{DC} @ 2A
Isolation Protection	3500 V _{DC}
Initial Insulation	1 G Ω min. at 500 V _{DC} Resistance Relay off Time 2 ms (Typical)
Relay on Time	3 ms (Typical)
Maximum Operating Speed	20 operations/min (at related load)
Digital input	4-ch
EEPROM	32KB
Power Requirement	3.3V & 5V DC
Operating temperature	-40 to 85° C
Storage Temperature	-40 ~ 85° C
Operating Humidity	5 ~ 95% RH

Ordering Information

P/N	Description
WISE-1252W0-0000E	4-ch Relay and 4-ch DIO I/O node board
WISE-1021WR-1100E	WSN IP Node, IEEE.802.15.4e Linear/Dust Mesh network with TI MSP430 MCU WISE-DB1021

Mouser Electronics

Authorized Distributor

Click to View Pricing, Inventory, Delivery & Lifecycle Information:

[Advantech:](#)

[WISE-1251W0-0000E](#)