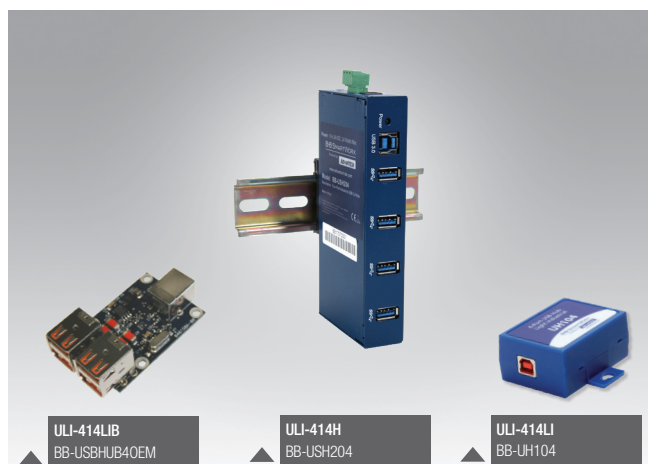


**ULI-414LIB**  
**ULI-414LI**  
**ULI-414I**  
**ULI-417I**  
**ULI-414CI**  
**ULI-417CI**  
**ULI-414H**  
**ULI-417H**

**BB-USBHUB4OEM**  
**BB-UH104**  
**BB-UHR204**  
**BB-UHR207**  
**BB-UHR304**  
**BB-UHR307**  
**BB-USH204**  
**BB-USH207**

## Industrial USB 2.0 & 3.0 Hubs



### Features (model dependent)

- Expand one USB port to 4 or 7 USB ports
- USB 2.0 & USB 3.0
- ESD protection
- High retention USB connectors grip cables tight
- Wide operating temperature (USB 2.0 hubs)
- USB host port power or external PSU power
- Metal or plastic enclosures – desk, panel, DIN rail mount
- 4 kV isolation between upstream & downstream ports (models ULI-414CI, ULI-417CI)
- Compact, OEM open bare-board hub (model ULI-414LIB)

## Introduction

These Advantech USB 2.0 and 3.0 hubs are more robust than office-grade hubs. Isolation and ESD protections are ideal for electrically harsh environments. "High Retention" USB connectors hold standard USB cables tight – requiring up to 1.54 kg (3.4 lb) force to disconnect them. Model ULI-414LIB is suitable for OEM applications where space is limited and/or external packaging is not required. ULI-414H and ULI-417H feature SuperSpeed USB 3.0 with data rates up to 5 Gbps and 900 mA downstream power to connected peripherals.

## Specifications

### USB Technology

Model #:	Upstream Port:	Downstream Ports:	Data Rate, each port:	Standards:
ULI-414LIB*	(1) High retention, Type B female	(4) High retention, Type A female	1.5, 12, 480 Mbps	2.0, 1.1 (backward compatible)
ULI-414LI		(4) High retention, Type A female		
ULI-414I		(4) High retention, Type A female		
ULI-417I		(7) High retention, Type A female	12 Mbps** +	
ULI-414CI		(4) High retention, Type A female		
ULI-417CI	(1) Type B	(7) High retention, Type A female	Up to 5 Gbps	SuperSpeed 3.0 (2.0, 1.1 backward compatible)
ULI-414H <sup>#</sup>		(4) Type A		
ULI-417H <sup>#</sup>		(7) Type A		

\* When installed, ULI-414LIB appears as an unbranded USB hub.

\*\* Isolation limits speed to 12 Mbps. (ULI, 414CI, ULI417CI)

+ Multi-transaction translator, 1 per port. (ULI, 414CI, ULI417CI)

† Supports xHCI USB controller. (ULI-414H, ULI-417H)

### Isolation & ESD Protections

Model #:	Isolation:	ESD Protection:	Surge Protection:
ULI-414LIB	—	15 kV air, 8kV contact	± 0.5 kV DC ports, ± 1 kV signal ports
ULI-414LI			
ULI-414I			
ULI-417I			
ULI-414CI	4 kV		
ULI-417CI			
ULI-414H	—	8 kV air	600 W
ULI-417H			

### Environmental

Model #:	Operating Temperature:	Storage Temperature:	Relative Humidity:
ULI-414LIB	-40 to +80 °C	-40 to +85 °C	0 to +95%, non-condensing
ULI-414LI			
ULI-414I			
ULI-417I			
ULI-414CI	-40 to +80 °C (0 to +40 °C using wall plug PSU)	-20 to +50 °C	0 to +85%, non-condensing
ULI-417CI			
ULI-414H			
ULI-417H	0 to +40 °C		

### Power

Model #:	Source:	Input Voltage:	Connection:	Consumption:	Downstream per port:
ULI-414LIB ULI-414LI	USB port†	5 Vdc	—	2.5 W, max.	100 mA
ULI-414I			—		
ULI-414I	USB port† <i>OR</i> external PSU	UBS port: 5 Vdc External PSU: 10-30 Vdc	Terminal Block (3 pos., 5.08 mm spacing, 28-12 AWG, solid wire) <i>OR</i> Barrel Jack (locking, threaded, 5.5mm, center positive)	16 W	500 mA
ULI-417I				30 W	
ULI-414CI		16 W			
ULI-417CI		External PSU: 10-30 Vdc	30 W	24 W	900 mA
ULI-414H‡					
ULI-417H‡		36 W			

† Check device to ensure USB bus power is adequate. If more power is required, Advantech offers external powered hubs.

‡ Power LED indicator.

### Mechanical

Model #:	Enclosure:	Mounting:	Dimensions, mm:	Weight, gm:	USB Cable:
ULI-414LIB	Open board	OEM	34 x 60 x 17	22.7	Not included†
ULI-414LI	IP30 Plastic	Panel #	65 x 61 x 27 <sup>§</sup>	49.9	
ULI-414I	IP30 metal (LEDs for Power, Port Ready)	Desk, DIN rail, panel #	168.2 x 86.3 x 35.1 <sup>§</sup>	64.0	Included, 1.8m
ULI-417I			233.2 x 119.4 x 35.1 <sup>§</sup>		
ULI-414CI			168.2 x 86.3 x 35.1 <sup>§</sup>		
ULI-417CI			233.2 x 119.4 x 35.1 <sup>§</sup>		
ULI-414H	Industrial grade, metal	DIN rail, panel	138.8 x 68.5 x 25	600	Included, 2.0 m
ULI-417H				620	

§ Mounting kit included.

§ Enclosure with brackets.

† A standard USB cable is required to connect to PC.

### Meantime Between Failures (MTBF)

- Calculation Method MIL217F Parts Count Reliability Prediction

Model #:	Hours:	Model #:	Hours:
ULI-414LIB	552747	ULI-414CI	143330
ULI-414LI		ULI-417CI	151173
ULI-414I	190999	ULI-414H	588858
ULI-417I	211773	ULI-417H	935103

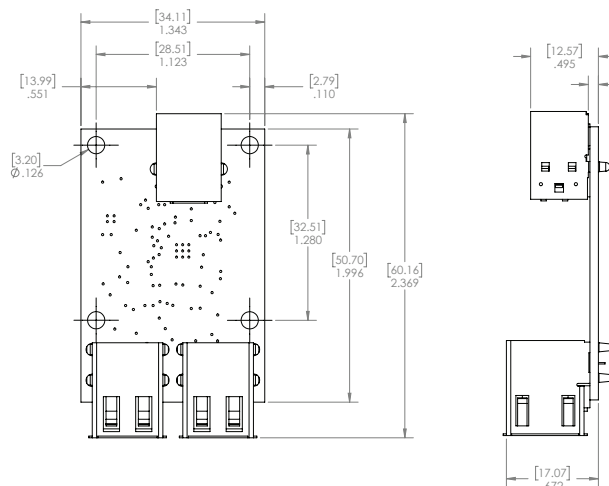
**ULI-414LIB** **BB-USBHUB40EM**  
**ULI-414LI** **BB-UH104**  
**ULI-414I** **BB-UHR204**  
**ULI-417I** **BB-UHR207**  
**ULI-414CI** **BB-UHR304**  
**ULI-417CI** **BB-UHR307**  
**ULI-414H** **BB-USH204**  
**ULI-417H** **BB-USH207**

## Regulatory/Approvals/Certifications

Model #:	Approvals:	CE Directives:	CE Standards:	Standards - other:
ULI-414LIB	FCC	2014/30/EU – Electromagnetic Compatibility	EMC: EN 55032 Class B – Electromagnetic Compatibility of Multimedia Equipment – Emissions Requirements	EN 61000-6-1 – Generic Immunity Standard for Residential, Commercial and Light-industrial Environments
ULI-414LI				EN 61000-6-1 – Generic Immunity Standard for Residential, Commercial and Light-industrial Environments
ULI-414I	FCC, UL C1/D2			
ULI-417I	FCC, KCC, UL C1/D2	2011/65/EU amended by (EU) 2015/863 – Reduction of Hazardous Substances (RoHS)	EN 55024 – Information Technology Equipment – Immunity Characteristics – Limits and Methods of Measurement	
ULI-414CI	FCC, UL C1/D2			
ULI-417CI	FCC, KCC, UL C1/D2	2012/19/EU – Waste Electrical and Electronic Equipment (WEEE)	EMC: EN 55032 Class A – Electromagnetic Compatibility of Multimedia Equipment – Emission Requirements	–
ULI-414H	FCC Class B, CE, KCC			
ULI-417H				

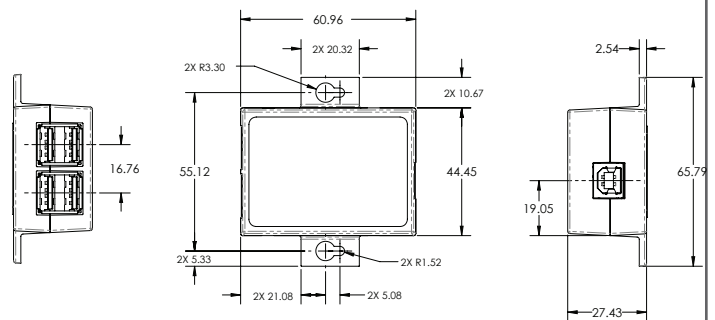
## Dimensions - ULI-414LIB

Unit = mm / in



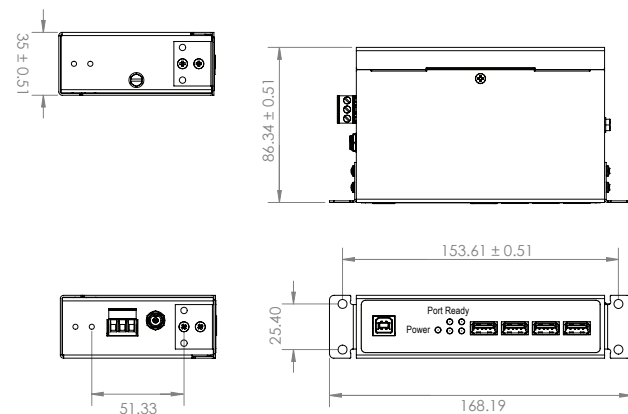
## Dimensions - ULI-414LI

Unit = mm



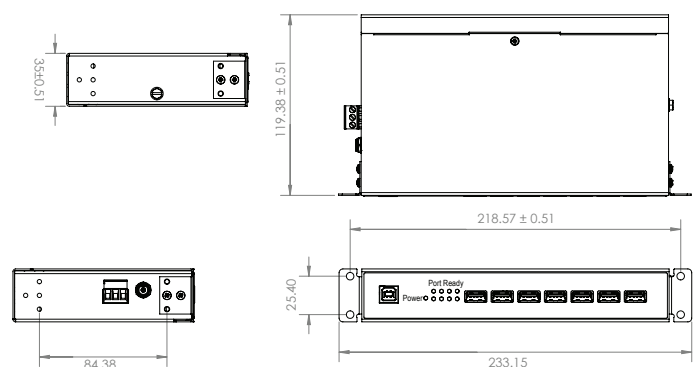
## Dimensions - ULI-414I, ULI-414CI

Unit = mm



## Dimensions - ULI-417I, ULI-417CI

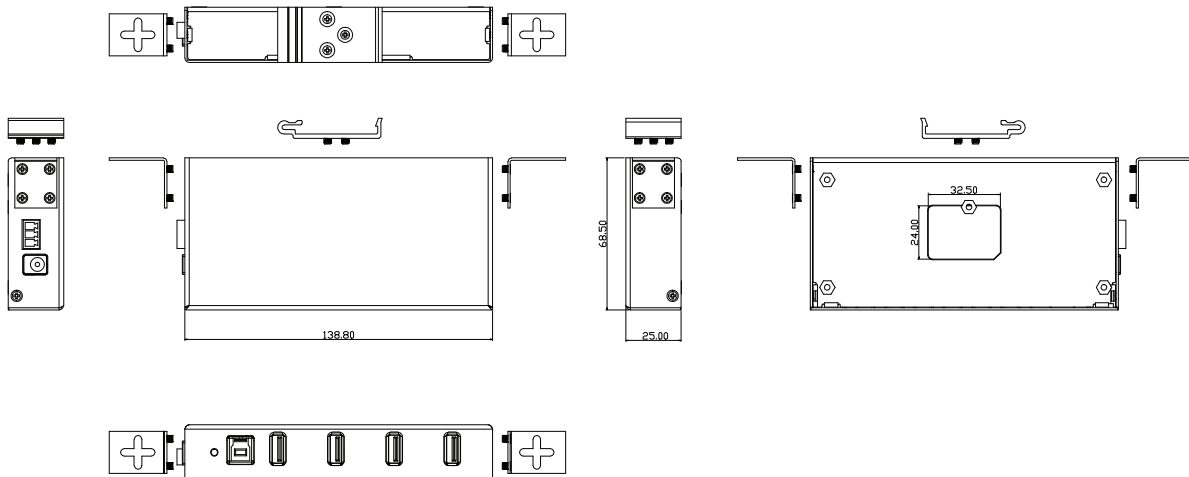
Unit = mm



<b>ULI-414LIB</b>	<b>BB-USBHUB40EM</b>
<b>ULI-414LI</b>	<b>BB-UH104</b>
<b>ULI-414I</b>	<b>BB-UHR204</b>
<b>ULI-417I</b>	<b>BB-UHR207</b>
<b>ULI-414CI</b>	<b>BB-UHR304</b>
<b>ULI-417CI</b>	<b>BB-UHR307</b>
<b>ULI-414H</b>	<b>BB-USH204</b>
<b>ULI-417H</b>	<b>BB-USH207</b>

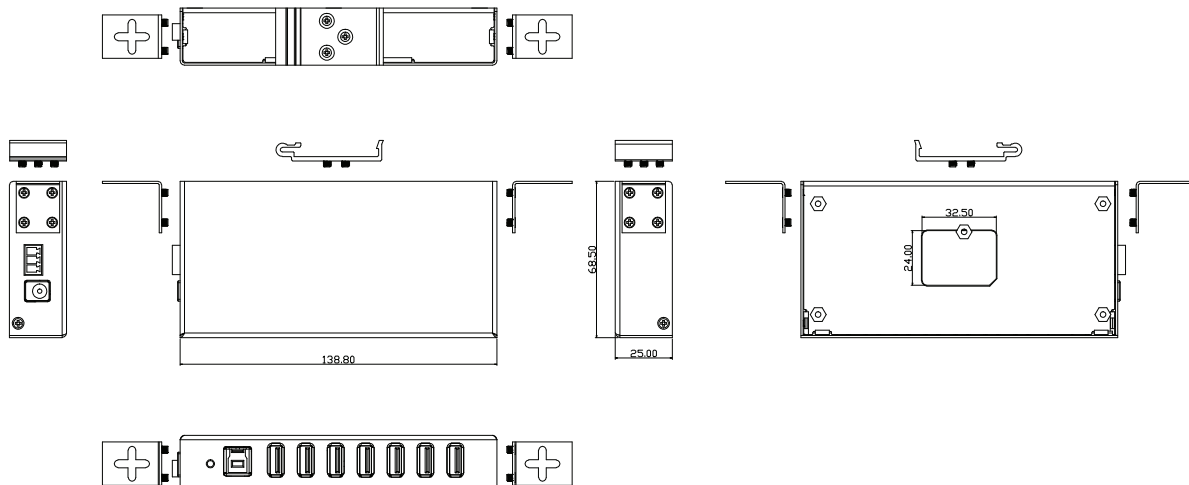
## Dimensions - ULI-414H

Unit = mm



## Dimensions - ULI-417H

Unit = mm

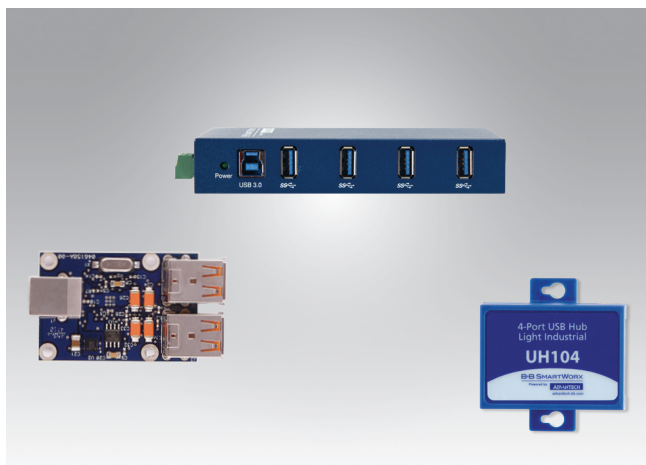


## Ordering Information

Model Number	Part Number to Order	Description
<b>ULI-414LIB</b>	BB-USBHUB40EM	Industrial USB 2.0 Hub, 4-port, OEM open board module, High retention USB ports, USB port power. <i>(USB cable required.)</i>
<b>ULI-414LI</b>	BB-UH104	Industrial USB 2.0 Hub, 4-port, High retention USB, USB port power. <i>(USB cable required. Mounting kit included.)</i>
<b>ULI-414I</b>	BB-UHR204	Industrial USB 2.0 Hub, 4-port, High retention USB, USB or PSU power. <i>(1.8m USB cable &amp; mounting kit included; PSU sold separately.)</i>
<b>ULI-417I</b>	BB-UHR207	Industrial USB 2.0 Hub, 7-port, High retention USB, External power. <i>(1.8m USB cable &amp; mounting kit included; PSU sold separately.)</i>
<b>ULI-414CI</b>	BB-UHR304	Industrial USB 2.0 Hub, 4-port, High retention USB, 2kV Isolation, External power. <i>(1.8m USB cable &amp; mounting kit included; PSU sold separately.)</i>
<b>ULI-417CI</b>	BB-UHR307	Industrial USB 2.0 Hub, 7-port, High retention USB, 2kV Isolation, External power. <i>(1.8m USB cable &amp; mounting kit included; PSU sold separately.)</i>
<b>ULI-414H</b>	BB-USH204	Industrial USB 3.0 Hub, 4-port, USB or PSU power. <i>(2m USB cable included; PSU sold separately.)</i>
<b>ULI-417H</b>	BB-USH207	Industrial USB 3.0 Hub, 7-port, External power. <i>(2m USB cable included; PSU sold separately.)</i>

# ULI-410 Series Selection Guide

## Industrial USB 2.0 and 3.0 Hubs



### Common Features

- Expand one USB port to 4 or 7 USB ports
- USB 2.0 & USB 3.0
- ESD protection
- Wide operating temperature (USB 2.0 hubs)
- USB host port power or external PSU power
- Metal or plastic enclosures – desk, panel, DIN rail mount
- 4 kV isolation between upstream & downstream ports (models ULI-414CI, ULI-417CI)
- Compact, OEM open bare-board hub (model ULI-414LIB)

## Industrial USB 2.0 & 3.0 Hubs Comparison Table

Model Number	ULI-414LIB	ULI-414LI	ULI-414I	ULI-417I	ULI-414CI	ULI-417CI	ULI-414H	ULI-417H		
Part Number to Order	BB-USBHUB40EM	BB-UH104	BB-UHR204	BB-UHR207	BB-UHR304	BB-UHR307	BB-USH204	BB-USH207		
Description	USB 2.0/1.1, OEM Open Board Module	USB 2.0/1.1 Hub, 4-port Miniature	USB 2.0/1.1 Hubs, 4-port UL C1/D2 & 7-port		USB 2.0/1.1 Hubs, 4-port UL C1/D2 & 7-port Isolated		USB 3.0 SuperSpeed Hubs, 4-port & 7-port			
Upstream Port	1									
Upstream Connector	USB Type B female, high-retention						USB Type B			
Downstream Port/s	4			7		4		7		
Downstream Connector	USB Type A female						USB Type A			
Data Rate, max.	1.5, 12, 480 Mbps		480 Mbps			12 Mbps				
USB Standards	2.0, 1.1 (backwards compatible)						5 Gbps			
LED Indicators	–		Power, Port Ready					Power		
ESD Protection	15 kV air, 8 kV contact						8 kV air			
Surge Protection	±0.5 kV dc ports, ±1 kV signal ports						600 W			
Isolation, Optical	–				4 kV		–			
Operating Temperature	-40 to +80 °C						0 to +40 °C			
Power Source	USB port		USB port or external PSU		External PSU					
Power Input	5 Vdc		USB port: 5 Vdc External PSU: 10-30 Vdc		10-30 Vdc			9-24 Vdc		
Power Connector Options	–		Terminal block (3-position, 5.08mm spacing, 28-12 AWG, solid wire) OR barrel jack (locking, threaded, 5.5 mm, center positive)				3-pin terminal block OR threaded barrel DC power jack			
Downstream Power	100 mA		500 mA				900 mA			
Enclosure	Open board	IP30 plastic	IP30 metal				Industrial-grade metal			
Mounting Installation	OEM	Panel	Desk, DIN rail, panel				DIN rail, panel			
Dimensions, mm	34 x 60 x 17	65 x 61 x 27 (with brackets)	168.2 x 86.3 x 35.1 (with brackets)	233.2 x 119.4 x 35.1 (with brackets)	168.2 x 86.3 x 35.1 (with brackets)	233.2 x 119.4 x 35.1 (with brackets)	138.8 x 68.5 x 25			
MTBF (MIL217F), hours	552747		190999		211773		143330	151173	588858	935103
Regulatory / Approvals / Certifications	FCC, CE									
	2014/30/EU – Electromagnetic Compatibility 2011/65/EU amended by (EU) 2015/863 – Reduction of Hazardous Substances (RoHS) 2012/19/EU – Waste Electrical and Electronic Equipment (WEEE)									
	EN 55032 Class B – Electromagnetic Compatibility of Multimedia Equipment – Emissions Requirements EN 55024 – Information Technology Equipment – Immunity Characteristics – Limits and Methods of Measurement						EN 55032 Class A – Electromagnetic Compatibility of Multimedia Equipment – Emission Requirements			
							EN 55024 – Information Technology Equipment – Immunity Characteristics – Limits and Methods of Measurement			
	–		UL C1/D2* (ULI-414I & ULI-417I)		KCC	UL C1/D2* (ULI-414CI & ULI-417CI)		KCC		
EN 61000-6-1 – Generic Immunity Standard for Residential, Commercial & Light-industrial Environments			EN 61000-6-1 – Generic Immunity Standard for Residential, Commercial & Light-industrial Environments						–	
			EN 61000-6-3 +A1 (B) – Generic Emissions Standard for Residential, Commercial & Light-industrial Environments							



\*UL C1/D2  
#E245458

# Mouser Electronics

Authorized Distributor

Click to View Pricing, Inventory, Delivery & Lifecycle Information:

[Advantech:](#)

[BB-USH204](#)