

# IDK-2115

## 15" XGA 1,200 cd/m<sup>2</sup> Ultra High Brightness Industrial Display Kit with LED B/L

**NEW**



### Features

- 15" LCD supports 1024 x 768 pixels and wide operating temperature (-20 ~ 70° C)
- Ultra-high brightness of 1200 cd/m<sup>2</sup> with LED backlight
- High contrast ratio of 2500:1
- Wide view angle of 176°/176°
- Superior sunlight readability
- LVDS signal interface
- 5W resistive touch solution (optional)
- Anti-Reflection surface treatment (optional)
- Manually VR brightness control (optional)
- Auto-dimming solution with light sensor (optional)
- Optical bonding (optional)

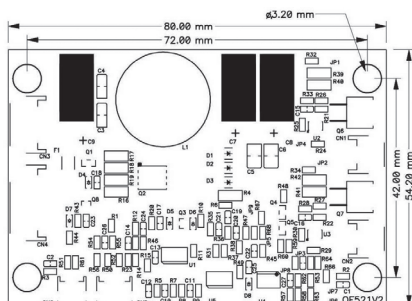
### Introduction

The Advantech IDK-2115 series comes with a 15" 1200 cd/m<sup>2</sup> industrial grade LCD display, and an LED driver board. The series is also available with flexible options for 5-wire touch screens and enhanced treatment such as anti-reflection surface treatment and optical bonding solution. IDK-2115 series supports 1200 cd/m<sup>2</sup> high brightness. Equipped with high level of brightness and wide operating temperature, IDK-2115 provides superior sunlight readability and is perfect for applications whether in semi-outdoor or outdoor environments.

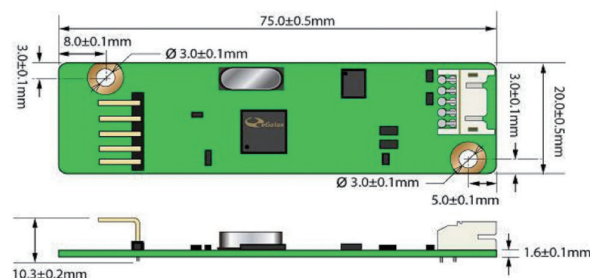
### Specifications

LCD Panel	Size	15", 4:3
	Resolution	1024 x 768 (XGA)
	Display mode	Normally Black (MVA)
	Viewing Angle (U/D/L/R)	88°/88°/88°/88°
	Brightness	1200 (cd/m <sup>2</sup> )
	Contrast Ratio	2500 : 1
	Response Time (ms)	23 ms
	Colors	6bit (262K)/8bit (16.2M)
	Input Voltage / Current	3.3 V / 0.8A
	Power Consumption	18.36 W (W/ LED Driver Board)
	Signal Interface	1 channel LVDS
	Weight	1010 g(W/ LED Driver Board)
	Dimensions (W x H x D)	326.5 x 253.5 x 9.1 mm
LED Driver Board	Efficiency	90%
	Input Voltage / Current	12V / 1.31A
	Dimensions (W x H x D)	80 x 54.2 x 10 mm
Touch Screen (R series)	Touch Screen	5-wire Resistive
	Transparency	80± 3%
	Durability	10 million times
Environment	Operating Temperature	-20 ~ 70° C
	Storage Temperature	-25 ~ 80° C

#### LED Driver Board



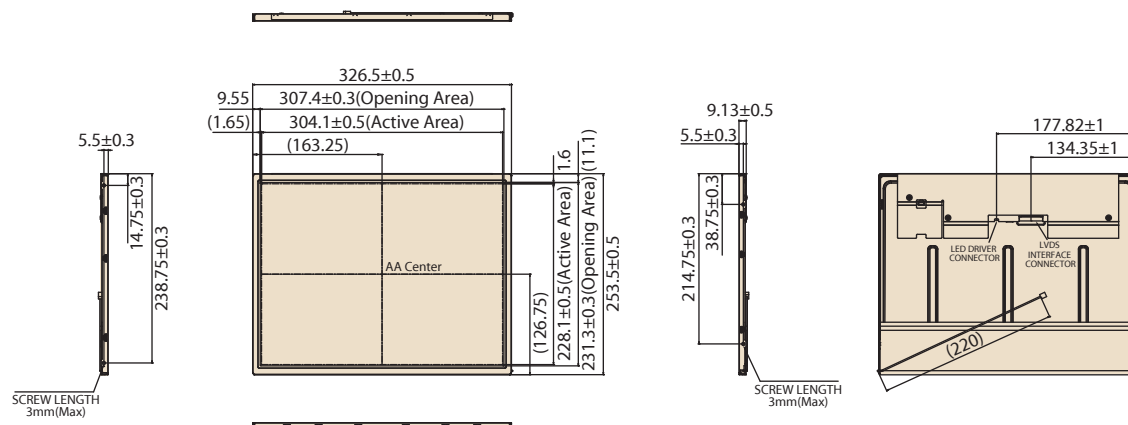
#### Touch Control Board



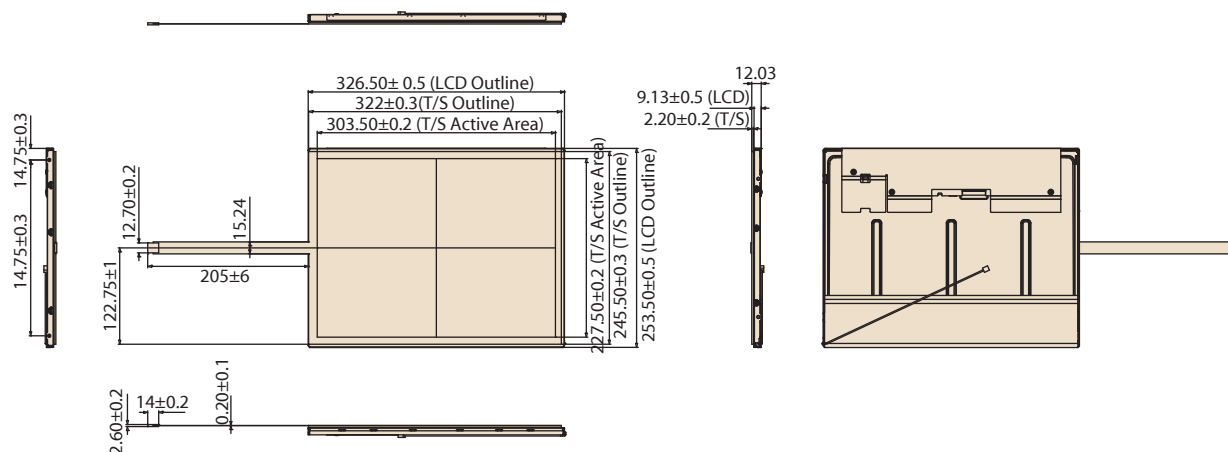
## Dimensions

Unit: mm

### IDK-2115N Series



### IDK-2115R Series



## Ordering Information

Part No.	Size	LCD Brightness (cd/m <sup>2</sup> )	Interface	Touch screen	Touch Interface
IDK-2115N-K2XGB2	15"	1200	LVDS	N/A	N/A
IDK-2115R-K2XGB2	15"	1200	LVDS	5-wire Resistive	USB

## Packing List

Part Number	Description
9680002141	1 x LED driver board
ETM-RES04C-EEH4EE	1 x USB touch control board (IDK-2115R-K2XGB2)
1700020324-01	1 x USB cable for Touch control board (IDK-2115R-K2XGB2)

Note: Package contents are subject to change without prior notice

## Optional Order

SBC Part No.	LVDS cable P/N	Display interface	B/L cable P/N	Touch interface	Touch power input
MIO-5270	96CB-L2040PCG4	Single channel 18bit LVDS (XGA)	96CB-E0605HAB1	USB	5V
PCM-9362	96CB-L2020PCG2	Single channel 18bit LVDS (XGA)	96CB-E0605HAB1	USB	5V
AIMB-270	96CB-L2040PCG4	Single channel 18bit LVDS (XGA)	96CB-E0605HAB1	USB	5V

For more compatible embedded board solution, please visit our Build Your Display web page as below:  
<http://www.advantech.com/buildyourdisplay>

# Mouser Electronics

Authorized Distributor

Click to View Pricing, Inventory, Delivery & Lifecycle Information:

[Advantech:](#)

[IDK-2115N-K2XGB2](#) [IDK-2115R-K2XGB2](#)