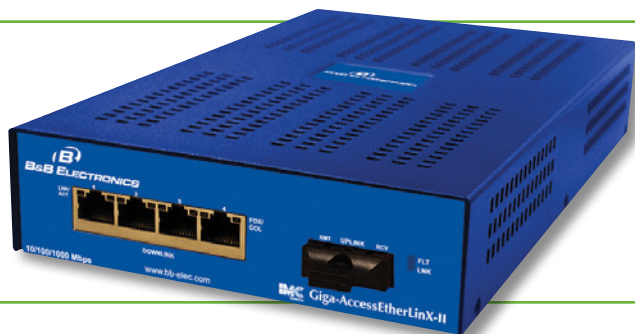


**B&B ELECTRONICS**

10/100/1000 Mbps Managed Multi-port Optical Demarcation Device

Giga-AccessEtherLinX-II AC Version

PRODUCT FEATURES

- 802.1Q VLAN-tags on per-port basis, based on DiffServ or PRI values
- SNMP Manageable
- QoS - 802.1p-based packet prioritization
- Per-port bi-directional Bandwidth control
- VLAN-tagging and Q-in-Q (double-tagging) segregates customer traffic
- Up and running in less then five minutes

The Giga-AccessEtherLinX-II enables service providers to offer differentiated "Transparent LAN" services to multi-tenant building and business customers without the need for costly remote routers. Residing at the customer premises, the Giga-AccessEtherLinX-II provides a VLAN-based, Layer 2 entry point to the last mile fiber network to support trunking, differentiating and separating customer traffic. Featuring SNMP management with per-port 802.1Q VLAN, 802.1p QoS, traffic prioritization, bandwidth control and multicast pruning/snooping (using IGMP v1, v2), the Giga-AccessEtherLinX-II is perfect for a wide range of Fiber-to-the-Home, Fiber-to-the-Curb and Fiber-to-the-Business (FTTx) services, and is an ideal solution for delivering Ethernet-based services to customers quickly and cost effectively. Designed with a small footprint, the Giga-AccessEtherLinX-II facilitates easy installation inside the premises. It features four 10/100/1000 twisted pair Ethernet downlink ports (for connecting users/LANs), with either a 1000Base-FX fiber or SFP uplink port, and is powered from an internal AC or DC power supply.

The Giga-AccessEtherLinX-II accepts traffic containing VLAN tags on the Uplink port and directs that traffic to the twisted pair downlink ports based on the VLAN ID. In addition to assigning 802.1Q VLAN-tags on a per-port basis, users can also "Qualify" the different VLAN TAGS to assign based on the DiffServ or PRI value of the incoming frame. Traffic priority for each port is supported with a hi/low prioritization queues. The Giga-AccessEtherLinX-II includes per port bi-directional bandwidth control, and supports IGMP multicast pruning which ensures only the necessary amount of IP multicast packets are bridged.

ORDERING INFORMATION

MODEL NUMBER	FIBER	FIBER PORTS	RANGE	ETHERNET PORTS	ETHERNET CONNECTOR
Giga-AccessEtherLinX-II AC					
852-10302	SFP	1	Various	4	RJ45
852-10303	SX-MM850-SC	1	550 m	4	RJ45
852-10304	LX-SM1310-SC	1	15 km	4	RJ45
852-10305	LX-SM1310/PLUS-SC	1	40 km	4	RJ45
852-10306	LX-SM1550/PLUS-SC	1	80 km	4	RJ45
852-10307	LX-SM1550/XLONG-SC	1	100 km	4	RJ45
SINGLE STRAND FIBER *					
852-10310	SSLX-SM1310-SC	1	15 km	4	RJ45
852-10311	SSLX-SM1550-SC	1	15 km	4	RJ45
852-10312	SSBX-SM1310-SC	1	10 km	4	RJ45
852-10313	SSBX-SM1490-SC	1	10 km	4	RJ45
852-10314	SSLX-SM1310/PLUS-SC	1	40 km	4	RJ45
852-10315	SSLX-SM1550/PLUS-SC	1	40 km	4	RJ45
852-10316	SSBX-SM1310/PLUS-SC	1	30 km	4	RJ45
852-10317	SSBX-SM1490/PLUS-SC	1	30 km	4	RJ45
852-10318	SSLX-SM1490/LONG-SC	1	70 km	4	RJ45
852-10319	SSLX-SM1550/LONG-SC	1	70 km	4	RJ45

* These products have single-strand fiber technology. Deploy in pairs or connect another compatible B&B IMC LLC single-strand fiber product.

Giga-AccessEtherLinX-II also available in CWDM Fiber.
Call for details.

ACCESSORIES

895-39226 - Rackmount Bracket

895-39949 - Rackmount Shelf



iView: Windows 2000/XP/Vista/Win7

10/100/1000 Mbps Managed Multi-port Optical Demarcation Device

Giga-AccessEtherLinX-II AC Version



SPECIFICATIONS

GENERAL

Monitors (remote) status without a physical presence or separate "IP" connection through UMA
 Maintains security; all management traffic can remain isolated from the data traffic
 Read/write IEEE 802.1Q VLAN-tags
 Q-in-Q (double-tagging) to further segregate customer VLAN traffic
 Can assign different TAGS based on DiffServ or PRI values of incoming frames.
 QoS: IEEE 802.1p-based or DSCP packet prioritization (2 queues [high/low] with 8 levels of priority)
 VLAN Tag-based on DSCP or priority of incoming frame ("traffic grooming")
 Layer 2 packet switching, store and forward operation
 Forwarding rate: 14,881 pps for 10 Mbps; 148,810 pps for 100 Mbps; 1,488,100 pps for 1000 Mbps
 Includes per-port bi-directional bandwidth control
 AutoCross for MDI/MDIX
 Features Auto Negotiation and Selective Advertising
 MTU: Supports packets up to 9600 bytes
 Supports Half- and Full-Duplex operation
 Supports IEEE 802.3x Flow Control

MANAGEMENT

Includes GUI-based iView² software, featuring iConfig utility for rapid IP configuration
 SNMP V1 and V2c compatible
 Includes DHCP client for IP address assignment
 Features TFTP client for remote upgrades
 Supports Telnet - Includes DB-9 connector for serial configuration
 Includes per port loopback test modes
 Includes diagnostic LEDs

ETHERNET PROTOCOLS SUPPORTED

802.3 10Base-T twisted pair
 802.3u 100Base-TX twisted pair
 802.3ab 1000Base-T twisted pair
 802.3z 1000Base-LX or SX fiber

MECHANICAL

Dimensions 1.64" H x 5.64" W x 8.95" D (4.2 cm x 14.3 cm x 22.7 cm)
 Enclosure Metal
 Shipping Weight 1.6 lbs. (0.6 kg)

POWER RATING

100-240V AC, 50/60Hz, 0.5/0.25A

ENVIRONMENTAL

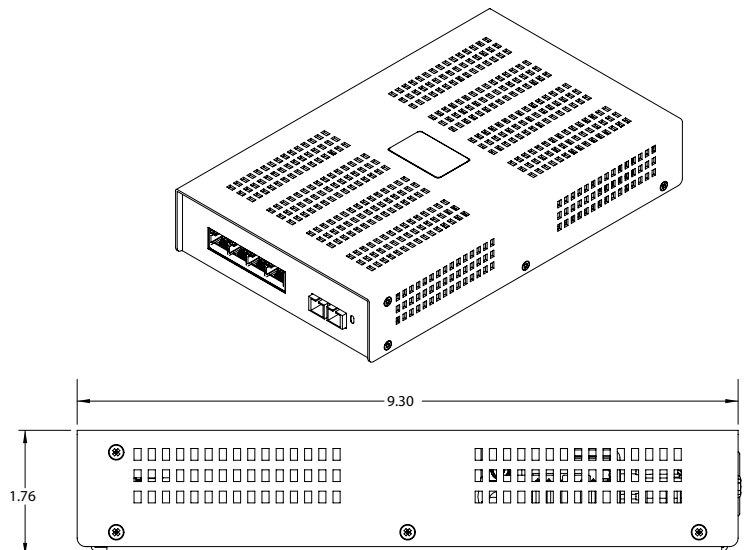
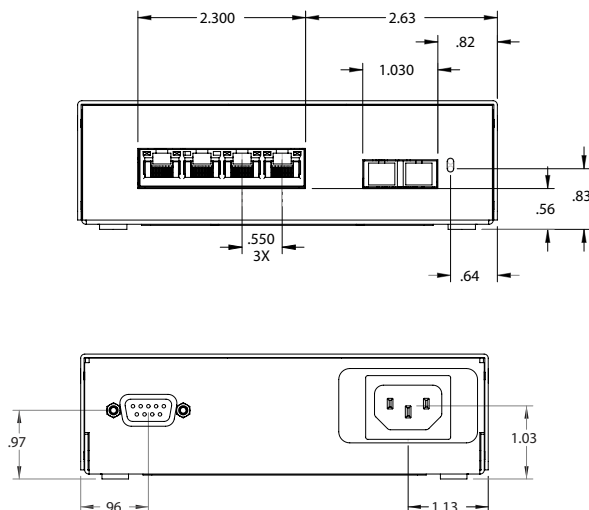
Operating Temperature +32° to 122° F (0° to +50° C)
 Storage Temperature -13° to +158°F (-25° to +70°C)
 Operating Humidity 5 to 95% Non-condensing

REGULATORY APPROVALS

FCC Class B
 UL/cUL, CE, CB

MECHANICAL DIAGRAM

(dimensions in inches)



Mouser Electronics

Authorized Distributor

Click to View Pricing, Inventory, Delivery & Lifecycle Information:

[Advantech:](#)

[852-10303](#) [852-10315](#) [852-10312](#) [852-10302](#) [852-10314](#) [852-10311](#) [852-10306](#) [852-10307](#) [852-10316](#) [852-10304](#) [852-10310](#) [852-10317](#) [852-10318](#) [852-10313](#) [852-10305](#) [852-10319](#)