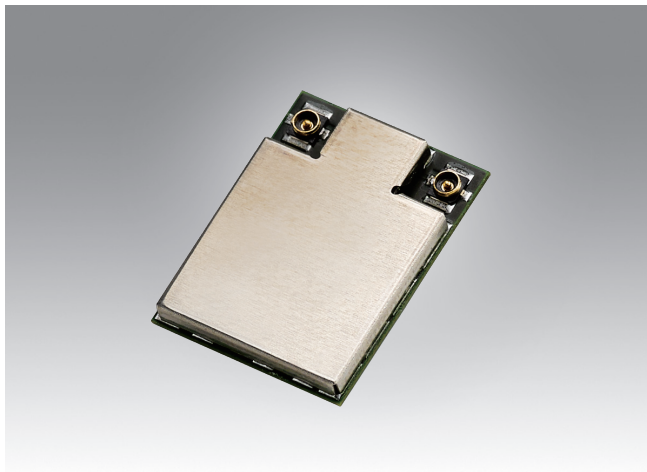


EWM-W306S01E

802.11 a/b/g/n/ac + Bluetooth 5.0
M.2 1216 solder down LGA type



Features

- IEEE 802.11 a/b/g/n/ac + Bluetooth 5.0
- 2Tx/ 2Rx
- Up to 866.7 Mbps data rate
- WEP/WPA2, WAPI, 802.11i
- Operating temperature: -30 ~ +85° C



Specifications

Main Chipset	Marvell 88W8997
Tx/Rx	2Tx/ 2Rx (2 I-PEX MHF4 Connector Receptacle (20449))
Standard Conformance	802.11 a/b/g/n/ac+BT5.0
Form Factor	M.2 1216 solder down LGA
Interface	WiFi: SDIO BT: UART
Operation Voltage	DC 3.3V ±5%
Antenna	ANT1: WiFi -->TX/RX ANT2: WiFi+BT-->TX/RX
Security	WEP/WPA2, WAPI, 802.11i
O.S Supported	Linux OS
Temperature Ranges	Operation: -30 ~ +85° C
Dimensions (L x W x H)	12 x 16 x 1.85 mm

Ordering Information

Part No.	Product Description
EWM-W306S01E	802.11 a/b/g/n/ac, Marvell 88W8997, WiFi 2T2R, BT5.0, M.2 1216

Suggested Antenna and Cable

Part No.	Specifications
1750008717-01	WiFi 2.4 GHz and 5 GHz dipole Antenna
1750008799-01	WiFi Coaxial Cable, 150 mm
1750008653-01	WiFi Coaxial Cable, 200 mm
1750007965-01	WiFi Coaxial Cable, 300 mm

Mouser Electronics

Authorized Distributor

Click to View Pricing, Inventory, Delivery & Lifecycle Information:

[Advantech:](#)

[EWM-W306S01E](#)