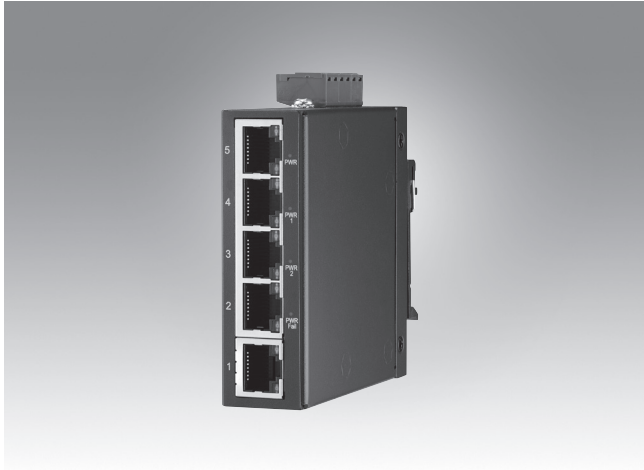


EKI-2525LI

5FE Slim-Type Unmanaged Industrial Ethernet Switch



Features

- 5 x fast Ethernet ports with auto MDI/MDI-X
- Supports 10/100 Mbps auto negotiation
- Compact size with DIN rail and wall mount
- IP40-rated metal enclosure
- Redundant 12 ~ 48 V_{DC} power terminal input plus one DC power jack and P-Fail relay
- Wide operating temperature range of -40 ~ 75°C

Introduction

The EKI-2525LI is a fast Ethernet solution. Power is delivered via a +12 ~ 48 VDC redundant input design with an additional DC power jack, and the unit is secured with power polarity reverse protection. Each port has 2 LED's to show the link status and transmission speed, and a relay output is included for an alarm events. In the event of a power failure, the built-in LED will activate the alarm to notify administrators. Engineers can simply verify the hardware status by checking the LED, which makes troubleshooting quick and easy. The EKI-2525LI comes with a compact metal enclosure, making it suitable for installation in narrow areas, and its IP40-rated enclosure ensures protection against dusty industrial environments.

Specifications

Communications

- **Standard IEEE** 802.3, 802.3u, 802.3x
- **LAN** 10/100BASE-TX
- **Transmission Distance** Up to 100 m
- **Transmission Speed** Up to 100 Mbps

Interface

- **Connectors** 5 x RJ45
6-pin removable terminal (power and relay)
1 x DC power jack
- **LED Indicators** PWR, PWR1, PWR2, PWR fail
10/100TX: link/activity, duplex

Power

- **Power Consumption** TBD
- **Power Input** 12 ~ 48 V_{DC}, redundant dual inputs
- **Fault Output** 1 relay output

Mechanism

- **Dimensions (W x H x D)** 25 x 80 x 84 mm (0.984" x 3.150" x 3.307")
- **Enclosure** IP40, metal housing with solid mounting kit
- **Mounting** DIN rail, wall

Protection

- **Reverse Polarity** Present
- **Overload Current** Present

Environment

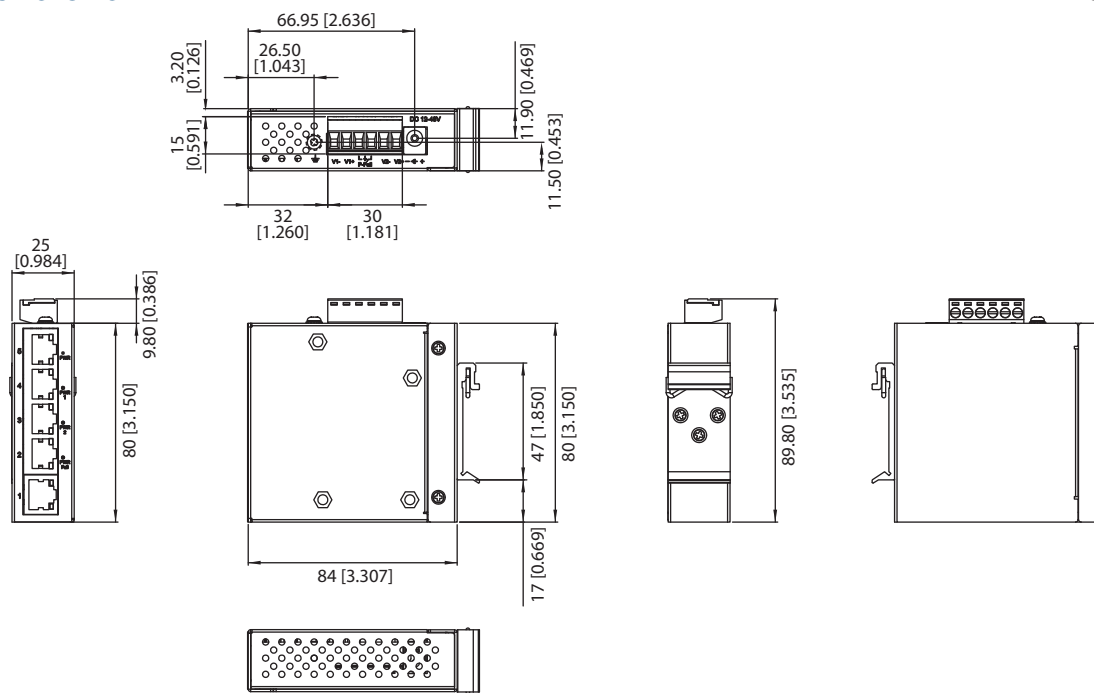
- **Operating Temperature** -40 ~ 75 °C (-40 ~ 167 °F)
- **Storage Temperature** -40 ~ 85 °C (-40 ~ 185 °F)
- **Operating Humidity** 10 ~ 95% (non-condensing)
- **Storage Humidity** 10 ~ 95% (non-condensing)
- **MTBF** TBD

Certification

- **Safety** TBD
- **EMI** CE, FCC Class A
- **EMS** EN 61000-4-2
EN 61000-4-3
EN 61000-4-4
EN 61000-4-5
EN 61000-4-6
EN 61000-4-8
Shock IEC 60068-2-27
Freefall IEC 60068-2-32
Vibration IEC 60068-2-6

Dimensions

Unit: mm [in.]



Panel Cut-Out Dimensions: 25 x 80 x 84 mm (0.984" x 3.150" x 3.307")

Ordering Information

- **EKI-2525LI-AE** 5FE Slim-Type Unmanaged Industrial Ethernet Switch

Mouser Electronics

Authorized Distributor

Click to View Pricing, Inventory, Delivery & Lifecycle Information:

[Advantech:](#)

[EKI-2525LI-AE](#)