

UShop EIS (Edge Intelligence Server)



Features

- Including UShop EIS service software
- Analytic functions included:
 - People Counting
 - Heatmap Analysis
 - Face Analysis
 - POS Monitor
- Support OnVIF-compliant IP Camera and Webcam Input
- Support UShop+ Store BI Cloud Service

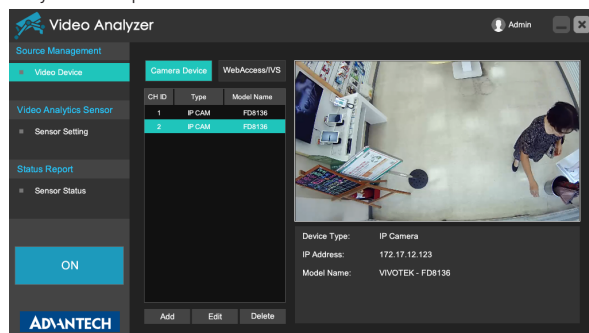
Introduction

UShop EIS is an intelligent server system designed for future retail store management. It bundles UShop EIS Service software with multiple analysis functions so that you can understand real time store operation and business intelligence information, such as store traffic counting, in-store heatmap, customer demographics and POS transaction data. This information can be accessed by local database or SDK/API for customized application/service integration. Furthermore, UShop EIS Service is fully supported UShop+ Store BI service that provided more comprehensive intelligent retail solutions. And UShop EIS platform is industrial design that provides the best reliability for 24/7 operations for various retail environment.

Main Functions

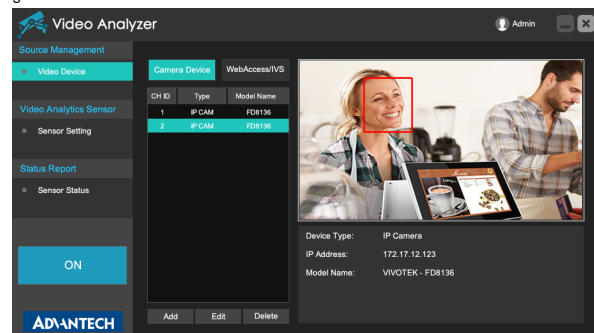
People Counter

Measure total number of visitors at different entrances simultaneously by video analysis of multiple cameras.



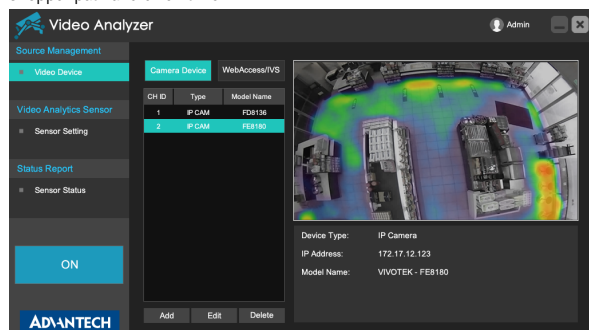
Face Analysis

Detect and analyze faces of customers at specific location to identify their age range, gender and focus.



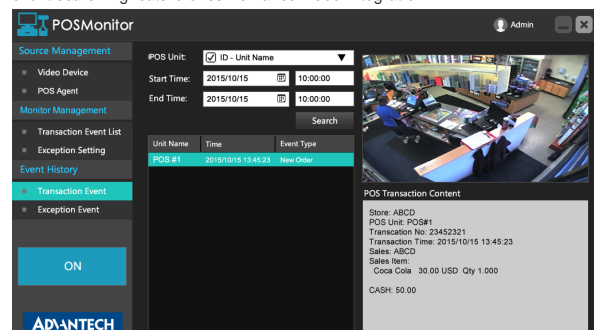
Heatmap Analysis

Analyze the shopping experience of customers at designated regions, including shopper path and dwell time.



POS Monitor




Convert POS transaction information to flexible data format for providing exception event searching feature of surveillance video integration.



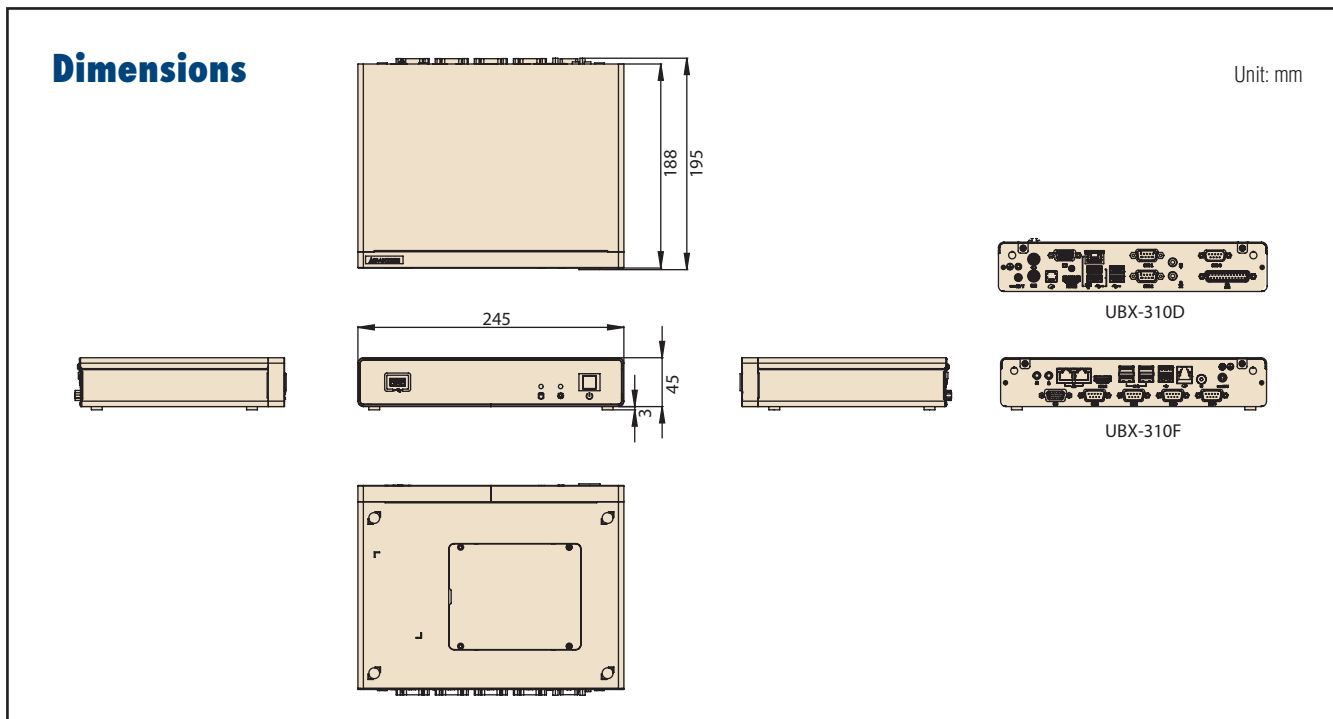
UShop EIS Software Specifications

General Functions	Camera Input	IP Camera (OnVIF), USB Webcam
	User Authority	Multi-level authority of user account management for different analytic functions
	Data Export Format	Chart report (PNG), Statistic report (CSV)
	Data Storage Statistic	Statistic counting data in SQL Database
	Data Integration	Windows SDK/API
	Schedule Management	Configurable starting/stopping time of analytic functions for different week days
	Remote Management	Remote setting through LAN with UShop EIS Manager application console
	Software Upgrade	Support OTA automatic upgrade
People Counting	Language	English, Traditional Chinese, Simplified Chinese
	Video Source Resolution	Maximum: 1920x1080, Minimum: D1
	Counting Data	Provide real-time counting raw data and statistic data
	Data Resolution	Minimum analytical period: 1 minute
Face Analysis	Counting Area	Support multiple counting lines in one camera
	Video Source Resolution	Maximum: 1920x1080, Minimum: D1
	Face Size	Minimum: 60x60 pixels
	Face Rotation	Maximum deviation of face rotation in any direction (yaw, pitch and roll): 15 degrees
Heatmap Analysis	Analytical Data	Face counting, Face dwell time (in screen), Gender, Age
	Video Source Resolution	Maximum: 1920x1080, Minimum: D1
	Data Resolution	Minimum analytical period: 10 minutes
	Analytical Data	Visit frequency, Dwell Time
POS Monitor	Result Data Format	Visualization Image (Heatmap graph), analysis database
	Supporting NVR	Advantech VideoCMS, Hikvision NVR
	POS Connection Type	Ethernet, Serial Ports
	Monitor Data	POS transaction data, POS operation message, video analytical event
	POS Data Storage	Maximum: 6 months (depends on POS transaction data format)

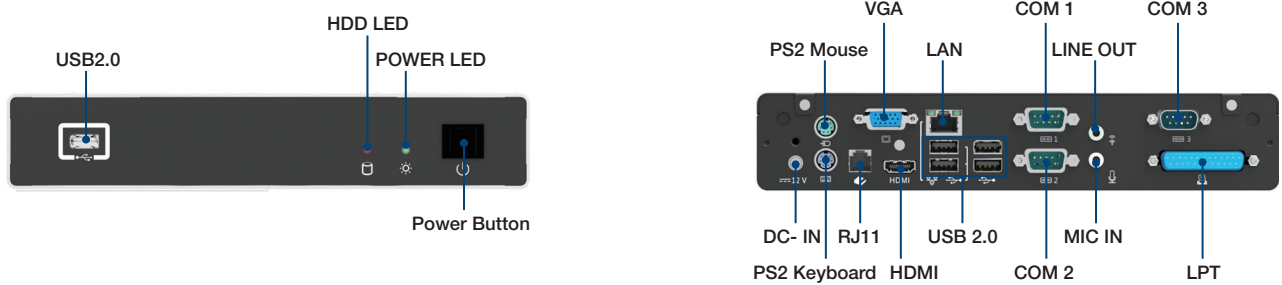
UShopEIS Hardware Platform Specification

	Lite	Standard	Professional
Part Number	UBX-310UST-G1E-C	AiMC-342UST-G1E-C	ACP-2320UST-G1E-C
			
Number of Process Units	6	16	32
Maximum Analyzing Channels	People Counting: 3 (2 PU per channel) Heatmap Analysis : 3 (2 PU per channel) Face Analysis: 1 (4 PU per channel) POS Monitor: 3 (2 PU per channel)	People Counting: 8 (2 PU per channel) Heatmap Analysis: 8 (2 PU per channel) Face Analysis: 4 (4 PU per channel) POS Monitor: 8 (2 PU per channel)	People Counting: 16 (2 PU per channel) Heatmap Analysis: 16 (2 PU per channel) Face Analysis: 8 (4 PU per channel) POS Monitor: 16 (2 PU per channel)
CPU	Intel® Celeron® J1900, 2.4 GHz	Intel® Core™ i5-3550S, 3.0 GHz	Intel® Core™ i7-4790S, 3.2 GHz
RAM	8 GB DDR3L, 1333 MHz	16 GB DDR3L, 1333 MHz	16 GB DDR3L, 1333 MHz
Graphics	Intel® HD Graphics, HDMI/VGA	Intel® HD Graphics, VGA	Intel® HD Graphics, VGA/DVI
Storage	1 x SATA 2.5" HDD (500 GB)	1 x SATA 3.5" HDD (1 TB)	1 x SATA 3.5" HDD (1 TB)
Internet	1 x RJ45 (10/100/1000 Mbps)	2 x RJ45 (10/100/1000 Mbps)	2 x RJ45 (10/100/1000 Mbps)
I/O	5 x USB, 3 x COM, 1 x LPT	8 x USB, 2 x COM, 1 x PS/2	4 x USB, 1 x COM, 2 x PS/2
Power	60W (12V power adapter)	300W (Input 100 ~ 240Vac)	350W (100 ~ 240Vac)
Size	245 x 45 x 185 mm	150 x 222 x 270 mm	482 x 88 x 480 mm
Weight	2 kg	5 kg	11.7 KG
Operating System	Microsoft® Windows Embedded Standard 7		
Software	UShop EIS Service		
Environment Temperature	0 - 40° C (32 - 104° F)	0 - 40° C (32 - 104° F)	0 - 40° C (32 - 104° F)
Environment Humidity	90% at 40° C (non-condensing)	10-85% at 40° C (non-condensing)	10-85% at 40° C (non-condensing)

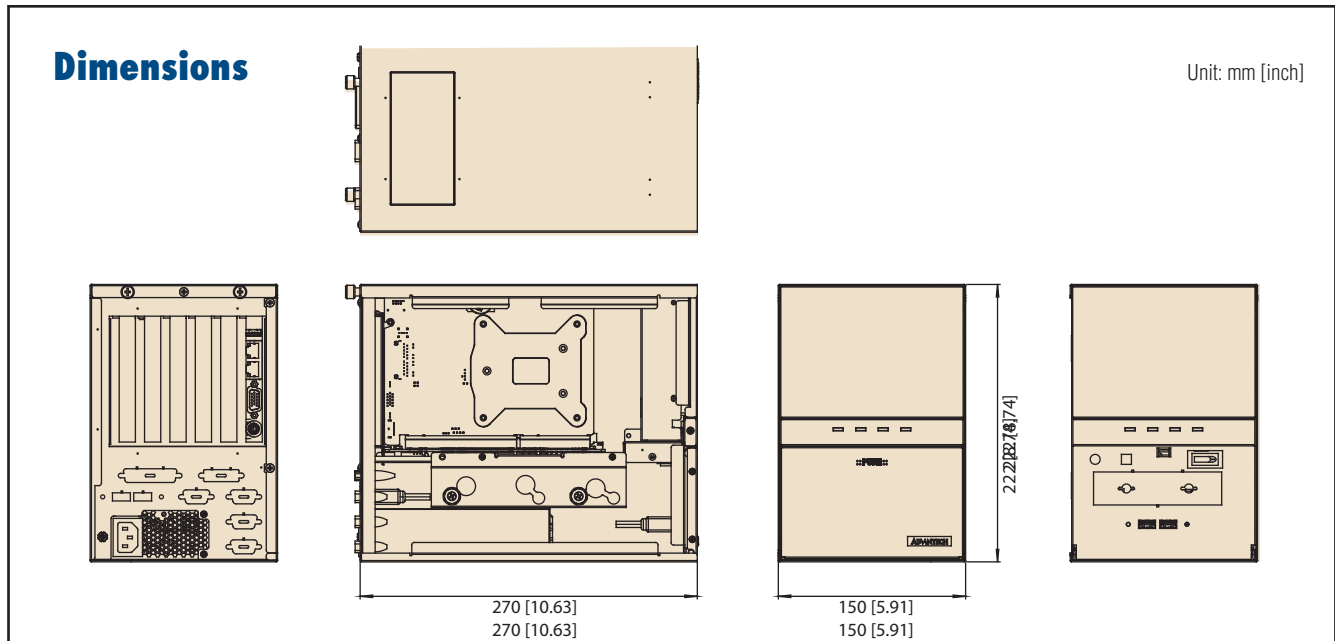
UShop EIS Lite - Dimension Specification



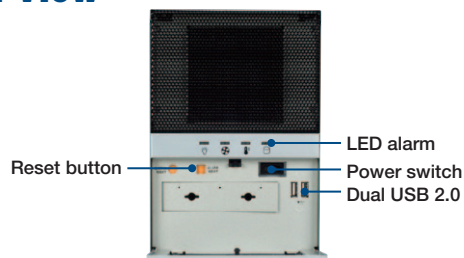
Integrated I/O



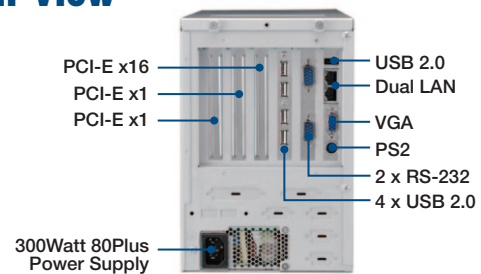
UShop EIS Standard - Dimension Specification



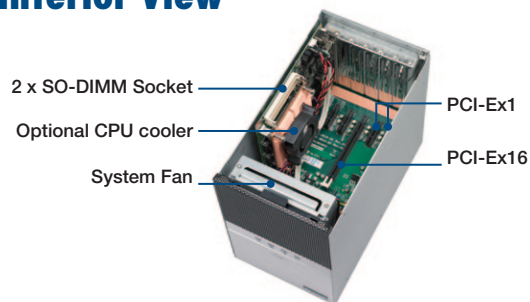
Front View



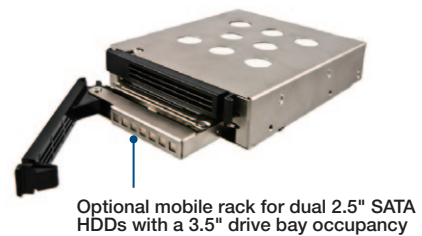
Rear View



Interior View



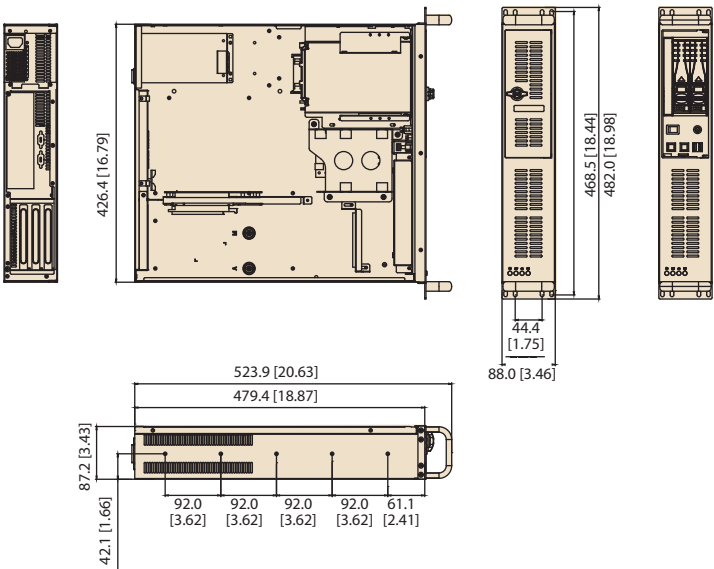
IDT-3120E



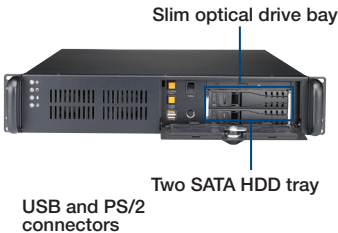
UShop EIS Professional - Dimension Specification

Dimensions

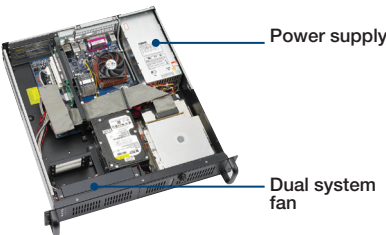
Unit: mm [inch]



Front View



Inside View



Rear View



Mouser Electronics

Authorized Distributor

Click to View Pricing, Inventory, Delivery & Lifecycle Information:

[Advantech:](#)

[ACP-2320UST-G1E-C](#) [AiMC-342UST-B1E](#) [AiMC-342UST-G1E-C](#) [UBX-310UST-G1E-C](#)