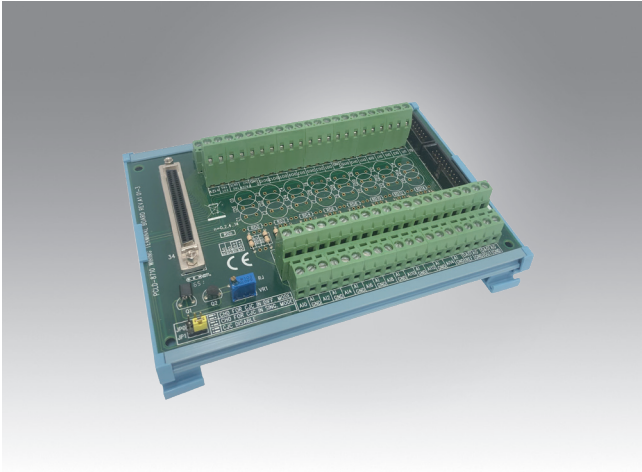


# PCLD-8000 Series

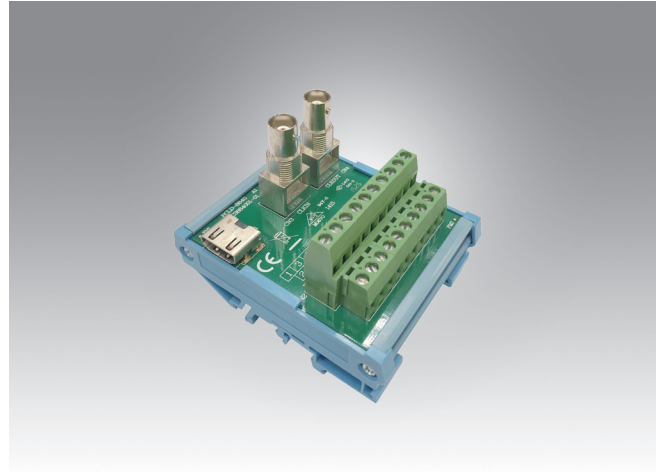


## PCLD-8710

### DIN-rail Wiring Terminal Board with CJC Circuit

#### Features

- Reserved space for signal-conditioning circuits such as low-pass filter, voltage attenuator and current shunt
- Dimensions (L x W x H): 169 x 121 x 25 mm (6.65" x 4.76" x 0.98")
- Ordering Information:
  - PCLD-8710-AE: DIN-rail Wiring Terminal Board with CJC Circuit
  - PCL-10168-1E: SCSI-68 Shielded Cable, 1 m
  - PCL-10168-2E: SCSI-68 Shielded Cable, 2 m
  - PCL-10168H-1E: SCSI shield cable with noise rejection, 1 m
  - PCL-10168H-2E: SCSI shield cable with noise rejection, 2 m



## PCLD-8840

### 20-pin DIN-rail HDMI Cable Wiring Board

#### Features

- Universal DIN-rail mounting screw terminal module with HDMI connector and two BNC connectors
- Dimensions (L x W x H): 77.5 x 67.5 x 51 mm (3.1" x 2.7" x 2.0")
- Ordering Information:
  - PCLD-8840-AE: 20-pin DIN-rail HDMI Cable Wiring Board
  - PCL-10119-1E: HDMI Cable, 1 m

# Mouser Electronics

Authorized Distributor

Click to View Pricing, Inventory, Delivery & Lifecycle Information:

[Advantech:](#)

[PCLD-8840-AE](#)