

SMT06C Series

5 Vin and 12 Vin single output

Total Power: 20W
Input Voltage: 4.5-5.5 Vdc or
10.2 - 13.8 Vdc
of Outputs: Single



Rev. 08.20.08_j93
SMT06C
1 of 4

Special Features

- 6 A current rating
- Input voltage range:
4.5 Vdc - 5.5 Vdc or
10.2 Vdc - 13.8 Vdc
- Output voltage range:
0.9 Vdc - 3.3/5.0 Vdc
- Industry leading value
 - Cost optimized design
 - Excellent transient response
- Output voltage adjustability
 - Pathway for future upgrades
 - Supports silicon voltage migration
- Resulting in reduced design-in and qualification time
- Designed in reliability:
MTBF of >7 million hours per Telcordia SR-332
- Available RoHS compliant
- 2 year warranty

Safety

UL/cUL : CAN/CSA 22.2
No. 60950

TÜV Product Service
(EN60950:2000)
CB report and certificate

Electrical Specifications

Output		
Voltage adjustability (see note 6)	5 V input models 12 Vins	0.9 - 3.3 Vdc 0.9 - 5.0 Vdc
Output setpoint accuracy	1.0% trim resistors	±2.5%
Line regulation	Low line to high line	±0.2%
Load regulation	Full load to min. load	±0.5%
Min/max load		0 A / 6 A
Overshoot (at turn on)	5 V input models 12 V input models	3.0% max. 1.0% max.
Undershoot	At turn-off	100 mV max.
Ripple and noise 5 Hz to 20 MHz	(See note 2)	See table on page 2
Transient response (see note 1)		75 mV max. deviation 150 µs recovery to within regulation band

All specifications are typical at nominal input, full load at 25°C unless otherwise stated.

Input		
Input voltage range	5 V input model 12 V input model	4.5 - 5.5 Vdc 10.2 - 13.8 Vdc
Input current	Minimum load Remote OFF	50 mA 5 mA
Input current (max.) (see note 8)	5 V input model 12 V input model	5.1 A max. @ I _o max. 1.6 A @ I _o max.
Input reflected ripple (see note 2)	5 Vin 12 Vin	52 mA (pk-pk) 56 mA (pk-pk)
Remote ON/OFF Logic compatibility ON OFF		Positive logic >2.4 Vdc <0.8 Vdc
Start-up time (see note 3)	Power up Remote ON/OFF	<20 ms <20 ms
Turn ON threshold	5 Vin 12 Vin	4.5 Vdc typ. 9.3 Vdc typ.
Turn OFF threshold	5 Vin 12 Vin	4.3 Vdc typ. 7.8 Vdc typ.
General Specifications		
Efficiency	See table on page 2	
Switching frequency	Fixed	200 kHz.
Approvals and standards	(See note 4)	TÜV product Services IEC69050, UL/cUL60950
Material flammability		UL94V-0
Weight		9.3 g (0.3 oz.)
Coplanarity		150 µm
MTBF	Telcordia SR-332	7,562,142 hours

Environmental Specifications

Thermal performance (see note 9)	Operating ambient, temperature	0 °C to +80 °C
	Non-operating	-40 °C to +125 °C
Protection		
Short-circuit		Hiccup, non-latching
Recommended system capacitance		
Input capacitance	(See note 10)	270 µF/20 mW ESR max.
Output capacitance	(See note 10)	680 µF/10 m W ESR max.

Ordering Information

Output Power (max)	Input Voltage	Output Voltage ⁽¹¹⁾	Output Current (min)	Output Current (max)	Maximum Load (typ)	Regulation		Model Numbers ^(12, 13)
						Line	Load	
20 W	4.5-5.5 Vdc	0.9-3.3 V	0 A	6 A	89%	±0.2%	±0.5%	SMT06C-05SADJJ
30 W	10.2 - 13.8 Vdc	0.9-5.0 V	0 A	6 A	91%	±0.2%	±0.5%	SMT06C-12SADJJ

All specifications are typical at nominal input $V_{in} = 12$ V, full load at 25°C unless otherwise stated.

Part Number System with Options

Product Family	Rated Output Current	Performance	Input Voltage	Number of Outputs	Packaging Options
SMT	06	C	12	SADJ	J
SMT = Surface Mount	06 = 6 A	C = C Series	05 = 4.5 Vdc to 5.5 Vdc 12 = 10.2 Vdc to 13.8 Vdc	SADJ = Single Adjustable Output	J = PB-free (RoHS 6/6 compliant)

Output Voltage Adjustment of the SMT20C Series

The ultra-wide output voltage trim range offers major advantages to users who select the SMT06C series. It is no longer necessary to purchase a variety of modules in order to cover different output voltages. The output voltage can be trimmed in a range of 0.9 Vdc to 5.0 Vdc. When the SMT06C series converter leaves the factory the output has been adjusted to the default voltage of 0.9 V.

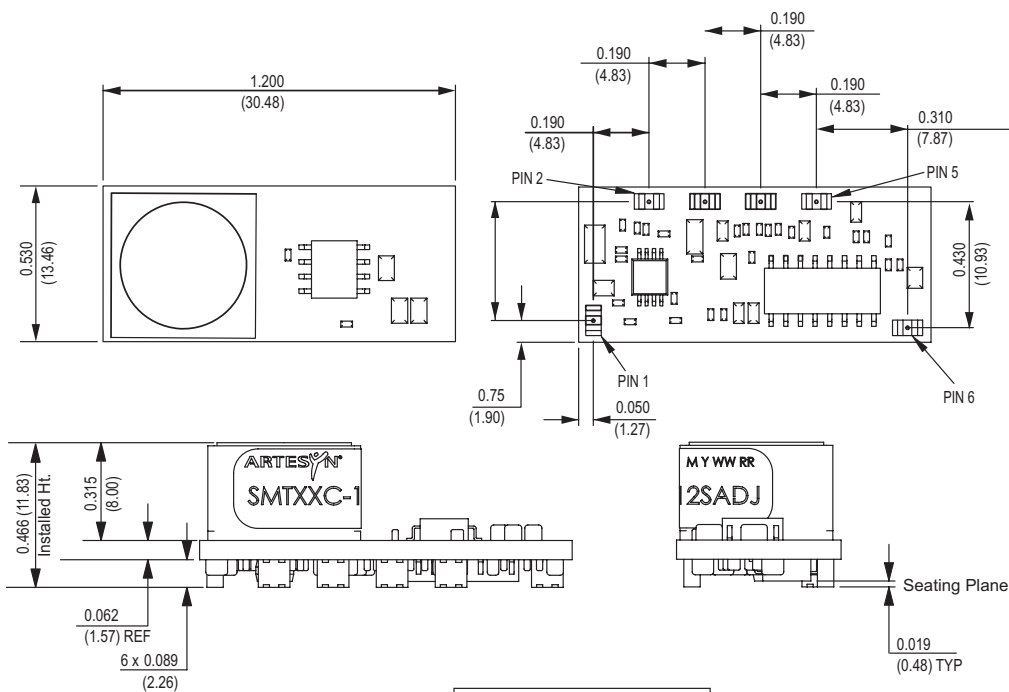
Notes

- 1 $di/dt = 10$ A/ μ s, $V_{in} = \text{Nom}$, $T_c = 25$ °C, load change = 0.50 I_o max. to 0.75 I_o max. and 0.75 I_o max. to 0.5 I_o max.
- 2 Measured with external filter. See Application Note 169 for details.
- 3 Power up is the time from application of dc input to Power Good high. Remote ON/OFF asserted high to Power Good high.
- 4 This product is only for inclusion by professional installers within other equipment and must not be operated as a stand alone product.
- 5 Measured as per recommended set-up. $C_{in} = 270$ μ F (20 mW ESR max.). $C_{out} = 680$ μ F (10 mW ESR max.).
- 6 Uses external resistor from trim to ground. Minimum value 485 W for 5 V model, 280 W for 12 V model. See Application Note 169 for details.
- 7 Signal line assumed <3 m.
- 8 External input fusing recommended.
- 9 See Application Note 169 for operation above 50 °C.
- 10 See Application Note 169 for more details.
- 11 TSE RoHS 5/6 (non Pb-free) compliant versions may be available on special request, please contact your local sales representative for details.
- 12 NOTICE: Some models do not support all options. Please contact your local representative or use the on-line model number search tool at www.powerconversion.com to find a suitable alternative.

Ripple and Noise Specification

Model	Output Voltage	Pk - Pk	RMS
5 V input models	0.9 Vdc to 2.5 Vdc	30 mV	15 mV
	3.3 Vdc	40 mV	15 mV
12 V input models	0.9 Vdc to 2.5 Vdc	40 mV	20 mV
	3.3 Vdc to 5 Vdc	50 mV	20 mV

Mechanical Drawing



All dimensions in inches (mm)
All tolerance 0.010in (0.25mm)
unless otherwise stated

Pin connections

Pin Number	Function
1	Remote ON/OFF
2	Power Good
3	Trim
4	Vout
5	GND
6	Vin

Americas
5810 Van Allen Way
Carlsbad, CA 92008
USA

5810 Van Allen Way
Carlsbad, CA 92008
USA
Telephone: +1 (760) 930 4600
Facsimile: +1 (760) 930 0698

Europe (UK)
Waterfront Business Park
Merry Hill, Dudley
West Midlands, DY5 1LX
United Kingdom

Waterfront Business Park
Merry Hill, Dudley
West Midlands, DY5 1LX
United Kingdom
Telephone: +44 (0) 1384 842 211
Facsimile: +44 (0) 1384 843 355

Asia (HK)
14/F, Lu Plaza
2 Wing Yip Street
Kwun Tong, Kowloon
Hong Kong
Telephone: +852 2176 3333
Facsimile: +852 2176 3888

14/F, Lu Plaza
2 Wing Yip Street
Kwun Tong, Kowloon
Hong Kong
Telephone: +852 2176 3333
Facsimile: +852 2176 3888

For global contact, visit:

www.powerconversion.com
technicalsupport@
powerconversion.com

While every precaution has been taken to ensure accuracy and completeness in this literature, Emerson Network Power assumes no responsibility, and disclaims all liability for damages resulting from use of this information or for any errors or omissions.

Emerson Network Power.
The global leader in enabling
business-critical continuity.

The global leader in enabling
business-critical continuity.

- AC Power
- Connectivity
- DC Power
- Embedded Computing
- **Embedded Power**
- Monitoring
- Outside Plant
- Power Switching & Controls
- Precision Cooling
- Racks & Integrated Cabinets
- Services
- Surge Protection

EmersonNetworkPower.com

Emerson Network Power and the Emerson Network Power logo are trademarks and service marks of Emerson Electric Co.
©2008 Emerson Electric Co.

Mouser Electronics

Authorized Distributor

Click to View Pricing, Inventory, Delivery & Lifecycle Information:

[Artesyn Embedded Technologies:](#)

[SMT06C-05SADJJ](#) [SMT06C-12SADJJ](#)