



## SPECIFICATION FOR APPROVAL

Customer.	STD
1	0.0000
2	0.0000
3	0.0000
4	0.0000
5	0.0000
6	0.0000
7	0.0000
8	0.0000
9	0.0000
10	0.0000
11	0.0000
12	0.0000
13	0.0000
14	0.0000
15	0.0000
16	0.0000
17	0.0000
18	0.0000
19	0.0000
20	0.0000
21	0.0000
22	0.0000
23	0.0000
24	0.0000
25	0.0000
26	0.0000
27	0.0000
28	0.0000
29	0.0000
30	0.0000
31	0.0000
32	0.0000
33	0.0000
34	0.0000
35	0.0000
36	0.0000
37	0.0000
38	0.0000
39	0.0000
40	0.0000
41	0.0000
42	0.0000
43	0.0000
44	0.0000
45	0.0000
46	0.0000
47	0.0000
48	0.0000
49	0.0000
50	0.0000
51	0.0000
52	0.0000
53	0.0000
54	0.0000
55	0.0000
56	0.0000
57	0.0000
58	0.0000
59	0.0000
60	0.0000
61	0.0000
62	0.0000
63	0.0000
64	0.0000
65	0.0000
66	0.0000
67	0.0000
68	0.0000
69	0.0000
70	0.0000
71	0.0000
72	0.0000
73	0.0000
74	0.0000
75	0.0000
76	0.0000
77	0.0000
78	0.0000
79	0.0000
80	0.0000
81	0.0000
82	0.0000
83	0.0000
84	0.0000
85	0.0000
86	0.0000
87	0.0000
88	0.0000
89	0.0000
90	0.0000
91	0.0000
92	0.0000
93	0.0000
94	0.0000
95	0.0000
96	0.0000
97	0.0000
98	0.0000
99	0.0000
100	0.0000

Description.	DC FAN
--------------	--------

Part No.	REV.
----------	------

Delta Model No. GFC0412DS-DV17 REV. 02

Sample Issue No.

Sample Issue Date. MAY-21-2015

PLEASE SEND ONE COPY OF THIS SPECIFICATION BACK  
AFTER YOU SIGNED APPROVAL FOR PRODUCTION PRE-  
ARRANGMENT.

APPROVED BY:

DATE :  
:

Delta Electronics, Inc.  
HeTianXia High-Tech Industrial Park.  
Shi Jie Town, Dong Guan City.  
Guangdong Province, China. P. R. C.  
TEL : 86-769-86329008  
FAX : 86-769-86631589

Delta Electronics, Inc.  
HeTianXia High-Tech Industrial Park.  
Shi Jie Town, Dong Guan City.  
Guangdong Province, China. P. R. C.

TEL : 86-769-86329008  
FAX : 86-769-86631589

STATEMENT OF DEVIATION  
\*\*\*\*\*

☒ NONE

☐ DESCRIPTION :

Delta Electronics, Inc.  
 HeTianXia High-Tech Industrial Park.  
 Shi Jie Town, Dong Guan City.  
 Guangdong Province, China. P. R. C.

TEL : 86-769-86329008  
 FAX : 86-769-86631589

SPECIFICATION FOR APPROVAL  
 \*\*\*\*\*

Customer:	STD
Description:	DC FAN
Customer P/N:	REV:B
Delta Model NO.:	GFC0412DS-DV17
Delta Safety Model NO.:	GFC0412DS-SM06
Sample Rev:	02
Issue NO:	
Sample Issue Date:	MAY-21-2015
Quantity:	

1. SCOPE:

THIS SPECIFICATION DEFINES THE ELECTRICAL AND MECHANICAL CHARACTERISTICS OF THE DC BRUSHLESS AXIAL FLOW FAN. THE FAN MOTOR IS WITH SINGLE PHASES AND FOUR POLES.

2. CHARACTERS:

ITEM	DESCRIPTION
RATED VOLTAGE	12 VDC
OPERATION VOLTAGE	10.8 – 12.6 VDC
INPUT CURRENT	1.50 (MAX. 2.00) A (SAFETY CURRENT ON LABEL 2.80 A)
INPUT POWER	18.00 (MAX. 24.00) W
SPEED	FRONT 20500±10% / REAR 17600±10% R.P.M.
MAX. AIR FLOW (AT ZERO STATIC PRESSURE)	0.941 (MIN. 0.847) M <sup>3</sup> /MIN. 33.22 (MIN. 29.90) CFM
MAX. AIR PRESSURE (AT ZERO AIRFLOW)	84.58 (MIN. 68.50) mmH <sub>2</sub> O 3.330 (MIN. 2.697) inchH <sub>2</sub> O
ACOUSTICAL NOISE (AVG.)	66.0 ( MAX. 70.0 ) dB-A
INSULATION TYPE	UL: CLASS A

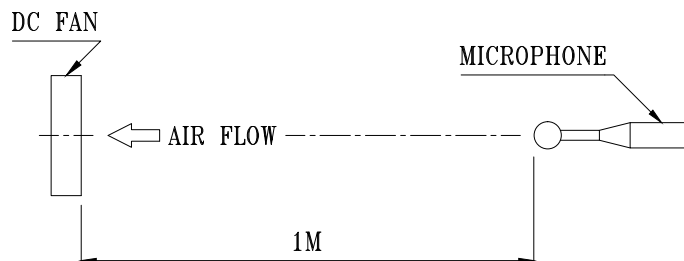
(continued)

PART NO:

DELTA MODEL: GFC0412DS-DV17

INSULATION STRENGTH	10 MEG OHM MIN. AT 500 VDC (BETWEEN FRAME AND (+) TERMINAL)
DIELECTRIC STRENGTH	5 mA MAX. AT 500 VAC 50/60 Hz ONE MINUTE, (BETWEEN FRAME AND (+) TERMINAL)
EXTERNAL COVER	OPEN TYPE
LIFE EXPECTANCE (AT LABEL VOLTAGE)	70,000 HOURS CONTINUOUS OPERATION AT 40 °C WITH 15 ~ 65 %RH.
ROTATION	TWO FANS ROTATE IN COUNTER DIRECTIONS SHOWED IN THE NAME PLATE SIDE
OVER CURRENT SHUT DOWN	THE CURRENT WILL SHUT DOWN WHEN LOCKING ROTOR.

- NOTES: 1. ALL READINGS ARE MEASURED AFTER STABLY WARMING UP THROUGH 10 MINUTES.
2. STANDARD AIR PROPERTY IS AIR AT (Td) 25°C TEMPERATURE, (RH) 65% RELATIVE HUMIDITY, AND (Pb) 760 mmHg BAROMETRIC PRESSURE.
3. THE VALUES WRITTEN IN PARENS , ( ), ARE LIMITED SPEC.
4. THE CHARACTERS SHOWED IN PAGE 1 IS THE CONDITION OF BOTH FANS RUN.
5. ACOUSTICAL NOISE MEASURING CONDITION:



NOISE IS MEASURED AT RATED VOLTAGE IN FREE AIR IN ANECHOIC CHAMBER WITH B & K SOUND LEVEL METER WITH MICROPHONE AT A DISTANCE OF ONE METER FROM THE FAN INTAKE.

-----  
PART NO:  
-----

DELTA MODEL:    GFC0412DS-DV17  
-----

3. MECHANICAL:

- 3-1. DIMENSIONS ----- SEE DIMENSIONS DRAWING
- 3-2. FRAME ----- PLASTIC UL: 94V-0
- 3-3. IMPELLER ----- PLASTIC UL: 94V-0
- 3-4. BEARING SYSTEM ----- TWO BALL BEARINGS
- 3-5. WEIGHT ----- 83 GRAMS(REF.)

4. ENVIRONMENTAL:

- 4-1. OPERATING TEMPERATURE ----- -10 TO +60 DEGREE C
- 4-2. STORAGE TEMPERATURE ----- -40 TO +75 DEGREE C
- 4-3. OPERATING HUMIDITY ----- 5 TO 90 % RH
- 4-4. STORAGE HUMIDITY ----- 5 TO 95 % RH

5. PROTECTION:

5-1. LOCKED ROTOR PROTECTION

IMPEDANCE OF MOTOR WINDING PROTECTS MOTOR FROM FIRE IN 96 HOURS OF LOCKED ROTOR CONDITION AT THE RATED VOLTAGE.

5-2. POLARITY PROTECTION

BE CAPABLE OF WITHSTANDING IF REVERSE CONNECTION FOR POSITIVE AND NEGATIVE LEADS.

6. RE OZONE DEPLETING SUBSTANCES:

- 6-1. NO CONTAINING PBBs, PBBOs, CFCs, PBBEs, PBDPEs AND HCFCs.

7. PRODUCTION LOCATION

- 7-1. PRODUCTS WILL BE PRODUCED IN CHINA OR THAILAND .

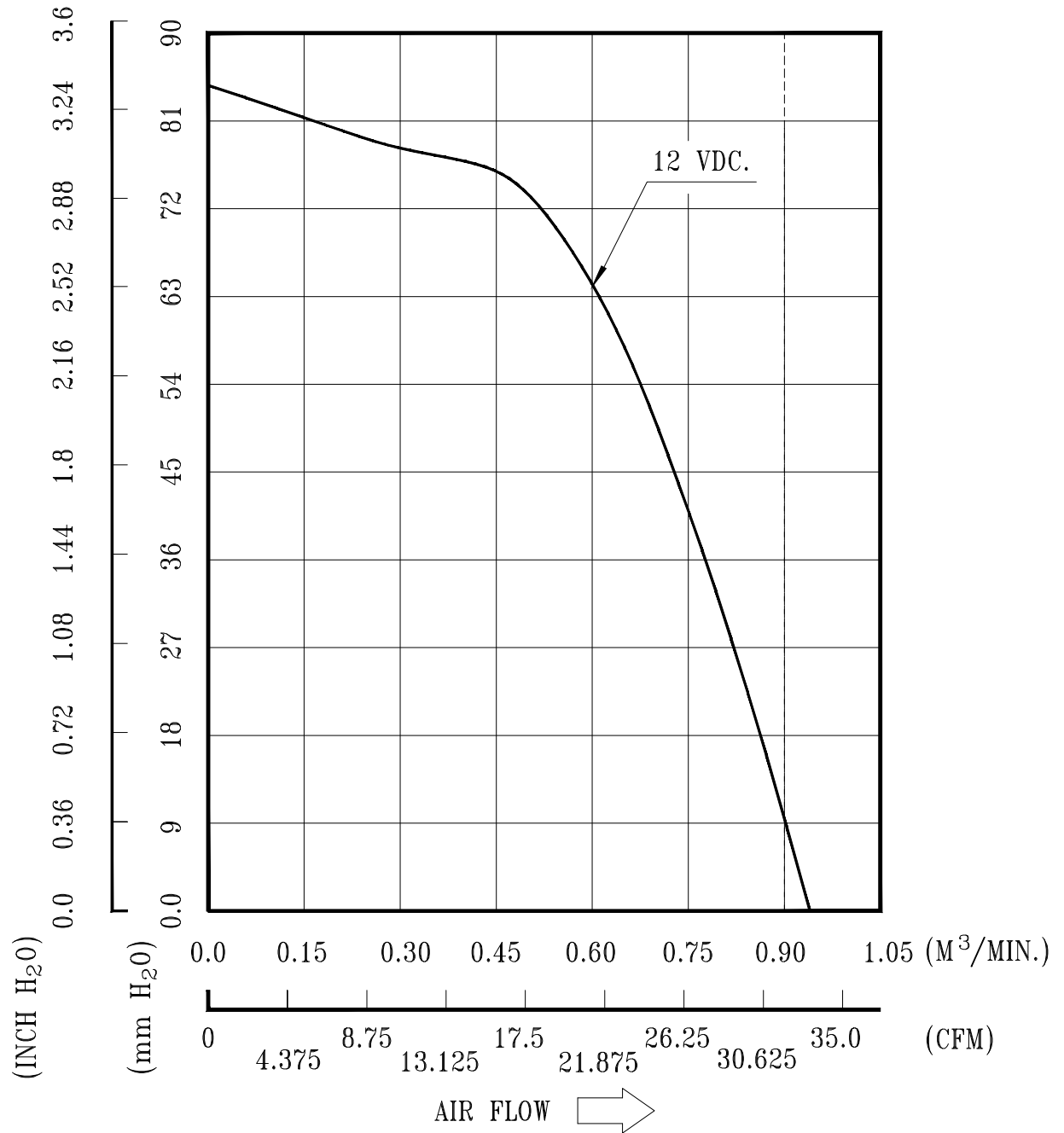
8. VIBRATION CONTROL

- 8-1. THE OVERALL VIBRATION CRITERIA, COMBINED BY RADIAL AND AXIAL DIRECTION, IS 0.6G MAX. BETWEEN 0~380HZ,. WHEN FAN SPEED IS DUTY CYCLE 100%.

PART NO:

DELTA MODEL: GFC0412DS-DV17

9. P & Q CURVE:



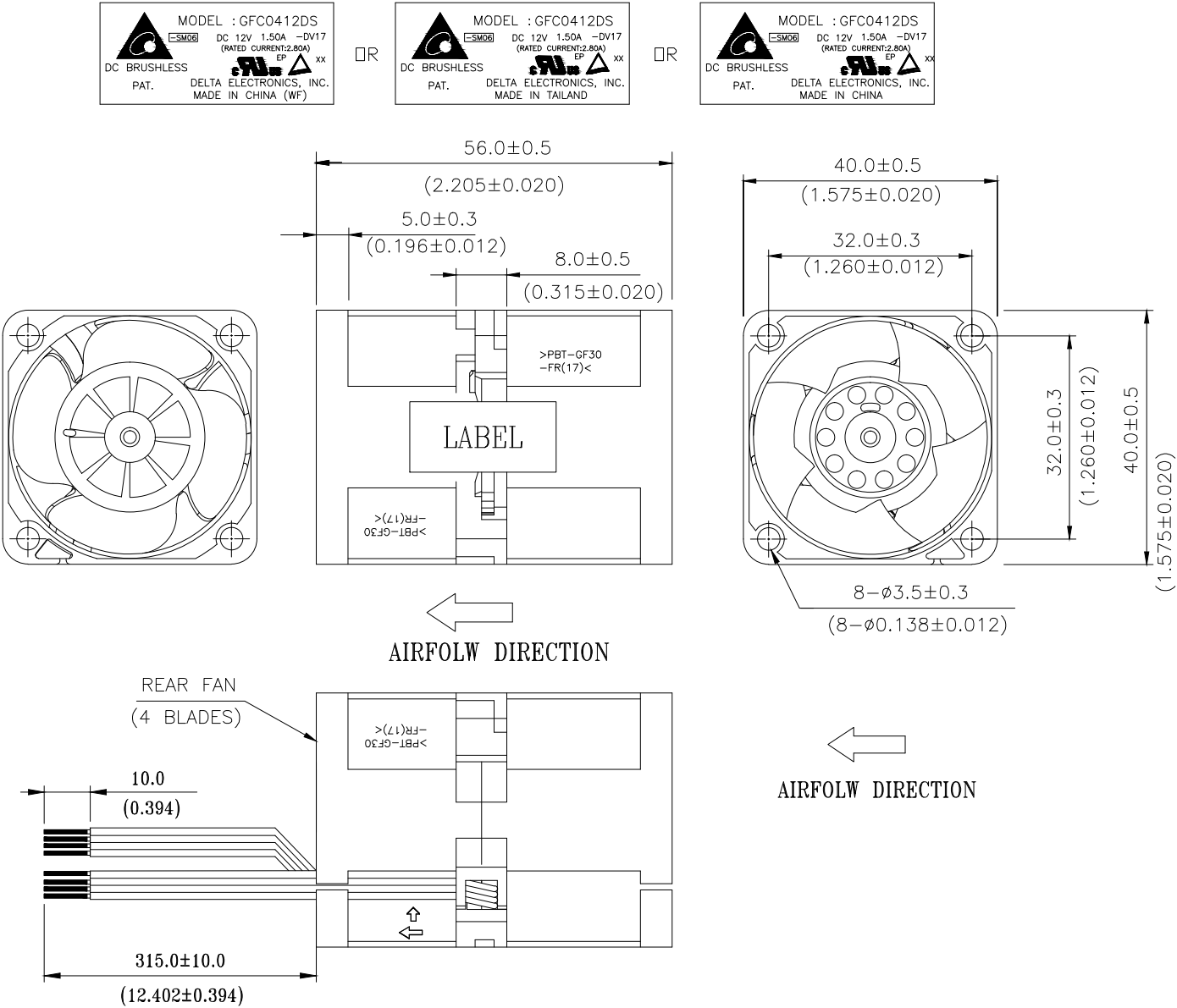
\* TEST CONDITION: INPUT VOLTAGE ----- OPERATION VOLTAGE  
TEMPERATURE ----- ROOM TEMPERATURE  
HUMIDITY ----- 65%RH

PART NO:

DELTA MODEL: GFC0412DS-DV17

10. DIMENSION DRAWING:

LABEL:



NOTES:

1. LEAD WIRE UL: 1061 AWG#28

FRONT FAN (5BLADES)	BLACK WIRE	-----(-)
	RED WIRE	-----(+)
	WHITE WIRE	----- (F00)
	GREEN WIRE	----- (PWM)
REAR FAN (4BLADES)	BROWN WIRE	-----(-)
	ORANGE WIRE	-----(+)
	BLUE WIRE	----- (RR0)
	YELLOW WIRE	----- (PWM)

2. THIS PRODUCT IS RoHS COMPLIANT.

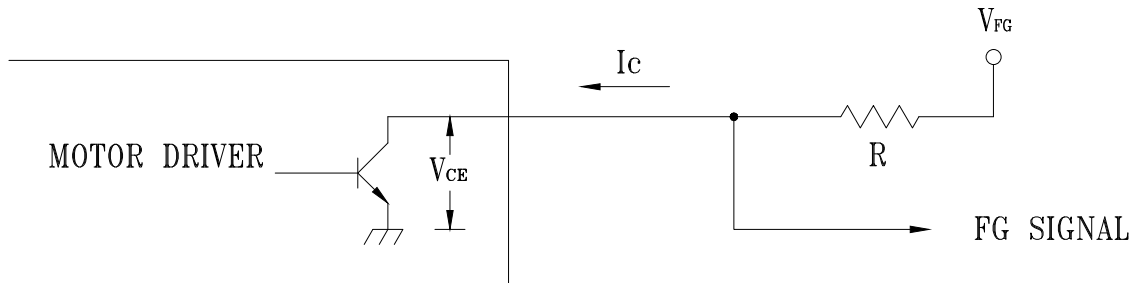
DIMENSION UNIT: MM(INCH)

PART NO:

DELTA MODEL: GFC0412DS-DV17

## 11. FREQUENCY GENERATOR (FG) SIGNAL (FRONT FAN):

### 11-1. OUTPUT CIRCUIT - OPEN COLLECTOR MODE:



CAUTION:

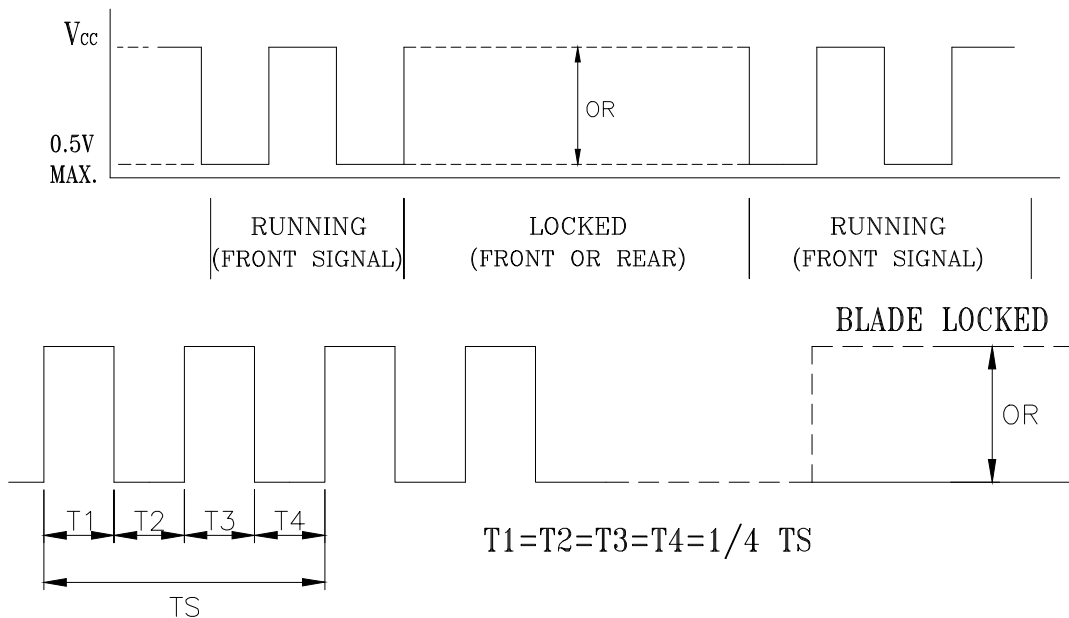
THE LEAD WIRE OF FG SIGNAL CAN NOT TOUCH  
THE LEAD WIRE OF POSITIVE OR NEGATIVE.

### 11-2. SPECIFICATION:

$V_{FG} = 12.6V \text{ MAX.}$        $I_c = 5mA \text{ MAX.}$

$V_{CE} = 0.5V \text{ MAX.}$        $R \geq V_{FG} / I_c$

### 11-3. FREQUENCY GENERATOR WAVEFORM:



$N = \text{R.P.M}$

$TS = 60 / N (\text{SEC})$

\*VOLTAGE LEVEL AFTER BLADE LOCKED

\*4 POLES

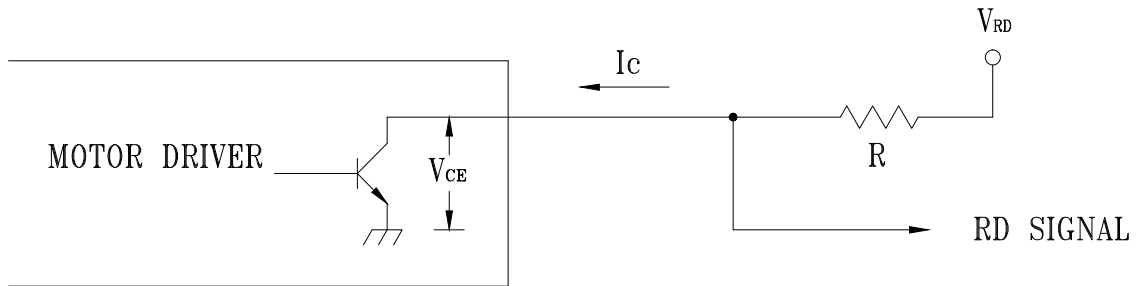


-----  
PART NO:  
-----

DELTA MODEL: GFC0412DS-DV17  
-----

## 12. ROTATION DETECT (RD) SIGNAL (REAR FAN):

### 12-1. OUTPUT CIRCUIT - OPEN COLLECTOR MODE:



#### CAUTION:

THE LEAD WIRE OF RD SIGNAL CAN NOT TOUCH  
THE LEAD WIRE OF POSITIVE OR NEGATIVE.

### 12-2. SPECIFICATION:

$V_{RD} = 12.6V \text{ MAX.}$        $I_c = 5mA \text{ MAX.}$

$V_{CE} = 0.5V \text{ MAX.}$        $R \geq V_{RD} / I_c$

### 12-3. FREQUENCY GENERATOR WAVEFORM:

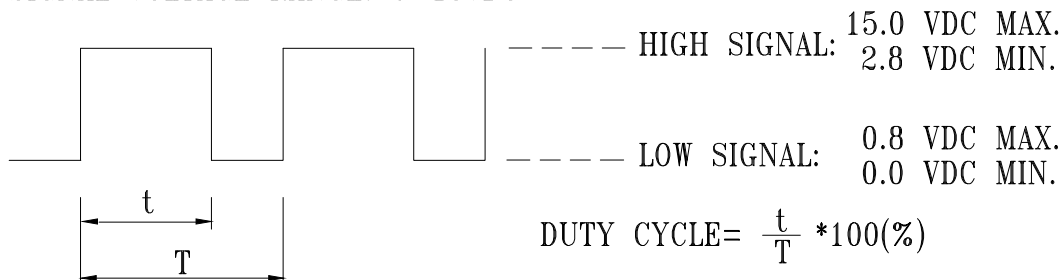


PART NO:

DELTA MODEL: GFC0412DS-DV17

### 13. PWM CONTROL SIGNAL:

SIGNAL VOLTAGE RANGE: 0~15VDC



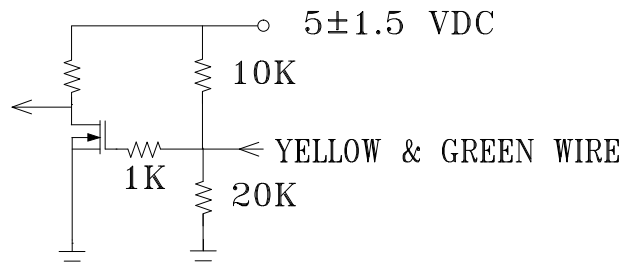
- THE PREFERRED OPERATING POINT FOR THE FAN IS 25KHZ.
- AT 100% DUTY CYCLE,THE ROTOR WILL SPIN AT MAXIMUM SPEED.
- AT 0% DUTY CYCLE,THE ROTOR WILL SPIN AT MINIMUM SPEED.
- WITH CONTROL SIGNAL LEAD DISCONNECTED,THE FAN WILL SPIN AT MAXIMUM SPEED.
- AT 25KHZ 30% DUTY CYCLE ,THE FAN WILL BE ABLE TO START FROM A DEAD STOP .

### 14. SPEED VS PWM CONTROL SIGNAL:

(AT RATED VOLTAGE & PWM FREQUENCY=25KHZ)

DUTY CYCLE (%)	SPEED R.P.M. (REF.)		CURRENT (A) TYP. TOTAL
	FRONT	REAR	
100	20500±10%	17600±10%	1.50
0	1500±450	1500±450	0.05

### 15. PWM CONTROL LEAD WIRE INPUT IMPEDANCE:



15-1. THE FAN SPEED WILL DEFAULT TO MAXIMUM WHEN THE SPEED CONTROL INPUT IS LEFT UNCONNECTED.



## ***Application Notice***

- 1. Delta will not guarantee the performance of the products if the application condition falls outside the parameters set forth in the specification.**
- 2. A written request should be submitted to Delta prior to approval if deviation from this specification is required.**
- 3. Please exercise caution when handling fans. Damage may be caused when pressure is applied to the impeller, if the fans are handled by the lead wires, or if the fan was hard-dropped to the production floor.**
- 4. Except as pertains to some special designs, there is no guarantee that the products will be free from any such safety problems or failures as caused by the introduction of powder, droplets of water or encroachment of insect into the hub.**
- 5. The above-mentioned conditions are representative of some unique examples and viewed as the first point of reference prior to all other information.**
- 6. It is very important to establish the correct polarity before connecting the fan to the power source. Positive (+) and Negative (-). Damage may be caused to the fans if connection is with reverse polarity, if there is no foolproof method to protect against such error specifically mentioned in this spec.**
- 7. Delta fans without special protection are not suitable where any corrosive fluids are introduced to their environment.**
- 8. Please ensure all fans are stored according to the storage temperature limits specified. Do not store fans in a high humidity environment. We highly recommend performance testing is conducted before shipping, if the fans have been stored over 6 months.**
- 9. Not all fans are provided with the Lock Rotor Protection feature. If you impair the rotation of the impeller for the fans that do not have this function, the performance of those fans will lead to failure.**
- 10. Please be cautious when mounting the fan. Incorrect mounting of fans may cause excess resonance, vibration and subsequent noise.**
- 11. It is important to consider safety when testing the fans. A suitable fan guard should be fitted to the fan to guard against any potential for personal injury.**
- 12. Except where specifically stated, all tests are carried out at room (ambient) temperature and relative humidity conditions of 25°C, 65% RH. The test value is only for fan performance itself.**
- 13. Be certain to connect an “4.7μF or greater” capacitor to the fan externally when the application calls for using multiple fans in parallel, to avoid any unstable power.**

# Mouser Electronics

Authorized Distributor

Click to View Pricing, Inventory, Delivery & Lifecycle Information:

[Delta Electronics:](#)

[GFC0412DS-DV17](#)