



DV SERIES

MULTI-PURPOSE POWER LINE FILTERS



INTRODUCTIONS

Two-stage filters are for susceptibility use when equipment impedance at radiation frequency is low.

COMPONENTS

PART NO.	C1(uF)	C2(uF)	L1(mH)	L2(uH)	Cy(pF)	R(KΩ)
03DVC5	0.22	0.22	1.0	30	5500	330K
06DVC5			1.7	70		
10DVC5			1.2	40		
20DVG5		0.47	1.73	30		

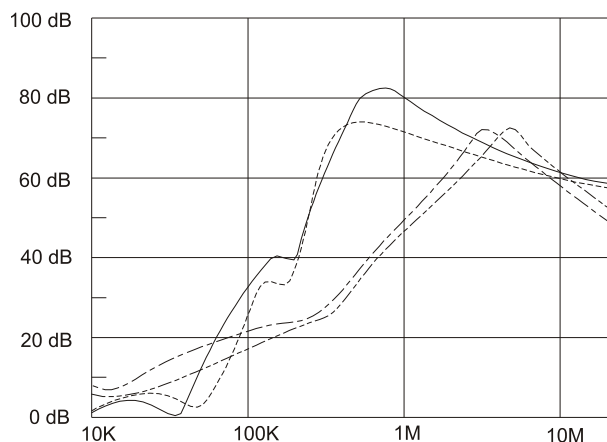
MINIMUM INSERTION LOSS IN dB

COMMONMODE (L-G) IN 50 OHM SYSTEM						
CURRENT RATING	FREQUENCY-MHz					
	.15	.50	1.0	5.0	10	30
3A	12	25	35	50	45	40
6A	23	40	50	55	55	40
• 10A	10	20	30	50	45	35
** 20A	20	20	35	45	45	30
DIFFERENTIALMODE (L-L) IN 50 OHM SYSTEM						
3A	30	50	60	60	70	50
6A	25	35	50	55	55	50
• 10A	25	55	60	60	55	55
** 20A	25	50	50	50	45	45

• VDE approved in 8A
 ** VDE approved in 16A

INSERTION LOSS (TYPICAL)

03DVC5 ----- COMMON MODE ----- DIFF. MODE
 06DVC5 ----- COMMON MODE ----- DIFF. MODE



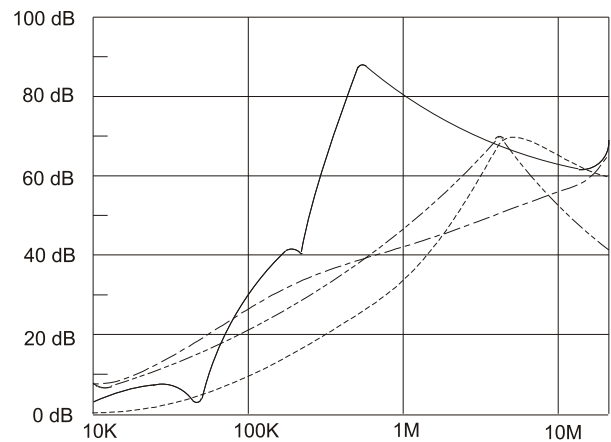
SPECIFICATIONS

- Maximum leakage current each
 line-to-ground: @115VAC 60Hz: 0.45mA
 @250VAC 50Hz: 0.90mA
- Hipot rating (one minute)
 line-to-ground: 2250VDC
 line-to-line: 1450VDC
- Operating frequency: 50/60Hz
- Rated voltage: 115/250VAC

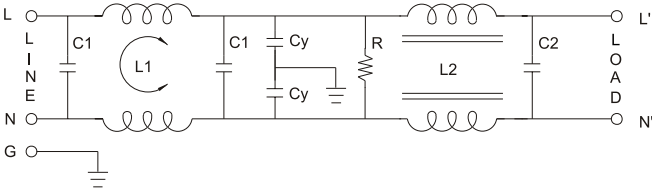
SERIES DIMENSIONS

PART NO.	DIMENSIONS IN INCHES/mm				
	A	B	C	D	E
03DVC5	3.25 82.5	1.90 48.3	1.15 29.2	2.38 60.5	2.77 70.4
06DVC5	3.75 95.2	2.06 52.3	1.54 39.1	2.94 74.7	3.34 84.8
10DVC5					
20DVG5	5.25 130.5	3.40 86.4		3.75 95.3	4.14 105.1

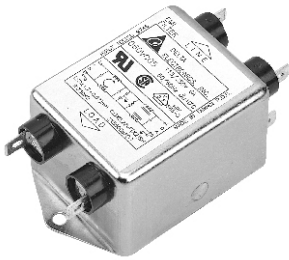
10DVC5 ----- COMMON MODE ----- DIFF. MODE
 20DVG5 ----- COMMON MODE ----- DIFF. MODE



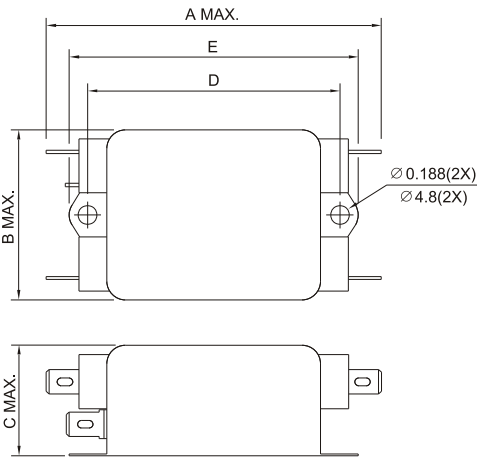
ELECTRICAL SCHEMATIC



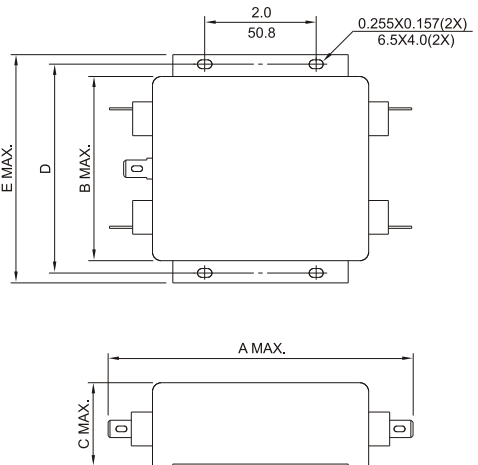
MECHANICAL CONSTRUCTION



CG5



GG5



UNIT: $\frac{\text{INCH}}{\text{mm}}$

Mouser Electronics

Authorized Distributor

Click to View Pricing, Inventory, Delivery & Lifecycle Information:

[Delta Electronics:](#)

[20DVGG5](#) [10DVCG5](#) [06DVCG5](#)