

EAO – Your Expert Partner for Human Machine Interfaces

K14-271.122120 - Pushbutton

K14-271.122120 - Pushbutton



Attention: The preview is based on a sample product. This can differ from your current configuration.

Mounting

Design	raised
Mounting cut-out	Ø 22.3 mm

Front

Front dimension	Ø 29 mm
Front shape	round

Other Attributes

Weight	0.019 kg
--------	----------

Operating-/Indication part

Lens colour	black anodized
Lens material	Aluminium
Lens optics	opaque
Lens profile	flush

IP-Rating

Front protection	IP67
------------------	------

Connection Method

Terminal	Soldering terminal
----------	--------------------

Actuator

Switching action	Maintained
Housing colour	black
Housing material	Plastic

Switching element

Switching system	Snap-action switching element
Switching current	5 A
Contacts	1 NC + 1 NO
Contact material	
Switching voltage	250 V AC

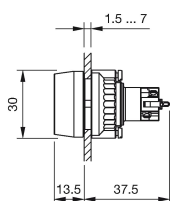
Function

Pushbutton

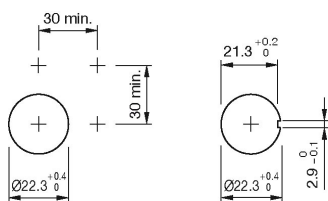
EAO – Your Expert Partner for Human Machine Interfaces

K14-271.122120 - Pushbutton

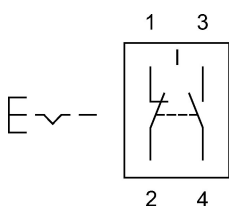
Dimensions



Mounting cut-outs



Wiring diagram



Legend

Contacts: NC = Normally closed, NO = Normally open

Mouser Electronics

Authorized Distributor

Click to View Pricing, Inventory, Delivery & Lifecycle Information:

EAO:

[K14-271.122120](#)