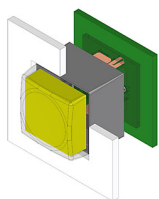


# EAO – Your Expert Partner for Human Machine Interfaces

## 95-414.740 - Illuminated pushbutton

### 95-414.740 - Illuminated pushbutton



*Attention: The preview is based on a sample product. This can differ from your current configuration.*

#### Front

Front shape	square
Front dimension	19 mm x 19 mm

#### Other Attributes

Weight	0,004 kg
--------	----------

#### Operating-/Indication part

Lens material	Plastic
Lens profile	concave
Lens optics	transparent
Lens illumination	illuminative
Lens colour	colourless mat

#### IP-Rating

Front protection	IP40
------------------	------

#### Connection Method

Terminal	PCB
----------	-----

#### Actuator

Switching action	Momentary
------------------	-----------

#### Switching element

Switching voltage	48 V DC
Switching current	0.05 A
Contacts	1 NO
Switching system	Slow-make switching element
Contact material	

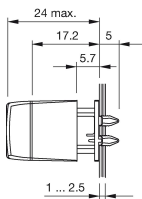
#### Function

Illuminated pushbutton	
------------------------	--

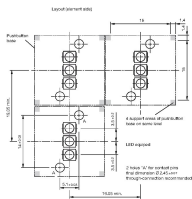
# EAO – Your Expert Partner for Human Machine Interfaces

## 95-414.740 - Illuminated pushbutton

## Dimensions



## Component layout



### Additional information

Suitable for PCB thickness 1.5 to 2.5 mm

Special spring clip contacts position and hold the pushbutton in place during the soldering process. The soldering provides the contacting and the mechanical strength. The pushbutton is designed for panel mounting only

### Legend

Contacts: NO = Normally open

Switching action: B = Momentary

# Mouser Electronics

Authorized Distributor

Click to View Pricing, Inventory, Delivery & Lifecycle Information:

EAO:

95-414.740