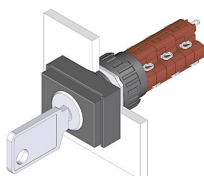


# EAO – Your Expert Partner for Human Machine Interfaces

## 51-297.025D2 - Keylock switch 2 positions

### 51-297.025D2 - Keylock switch 2 positions



*Attention: The preview is based on a sample product. This can differ from your current configuration.*

#### Mounting

Mounting cut-out	Ø 16 mm
Design	raised

#### Front

Front dimension	18 x 24 mm
Front shape	rectangular
Front material	Plastic
Front colour	black

#### Other Attributes

Weight	0.016 kg
--------	----------

#### Operating-/Indication part

Switching angle	C = 90°
-----------------	---------

#### IP-Rating

Front protection	IP65
------------------	------

#### Connection Method

Terminal	Solder
----------	--------

#### Actuator

Key remove	A
Switching action	Rest - Maintained

#### Switching element

Rotary positions	2
Switching system	Snap-action switching element
Switching current	5 A
Contacts	3 NC + 3 NO
Contact material	Gold
Switching voltage	250 V AC

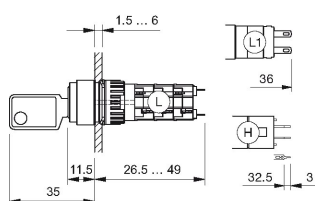
#### Function

Keylock switch
----------------

# EAO – Your Expert Partner for Human Machine Interfaces

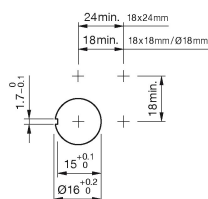
## 51-297.025D2 - Keylock switch 2 positions

### Dimensions

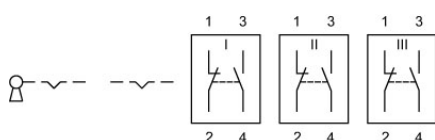


H = Universal terminal 2.0 x 0.5 mm

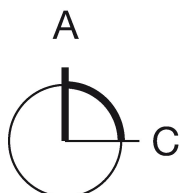
### Mounting cut-outs



### Wiring diagram



### Switching positions



### Additional information

Standard lock: DOM 311

Two keys are supplied with each key lock switch

Optional lock numbers on request

### Legend

Contacts: NC = Normally closed, NO = Normally open

Switching action: A = Rest, C = Maintained

# Mouser Electronics

Authorized Distributor

Click to View Pricing, Inventory, Delivery & Lifecycle Information:

EAO:

[51-297.025D2](#)