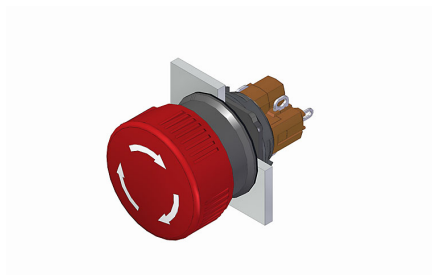


EAO – Your Expert Partner for Human Machine Interfaces

51-256.025 - Stop switch complete

51-256.025 - Stop switch complete



Attention: The preview is based on a sample product. This can differ from your current configuration.

Mounting

| | |
|------------------|---------|
| Mounting cut-out | Ø 16 mm |
| Design | raised |

Front

| | |
|-----------------|-----------|
| Front dimension | Ø 24.5 mm |
| Front shape | round |

Other Attributes

| | |
|--------|----------|
| Weight | 0,011 kg |
|--------|----------|

Operating-/Indication part

| | |
|-------------------|------------------|
| Lens material | Plastic |
| Lens colour | red |
| Lens profile | Mushroom |
| Lens optics | opaque |
| Lens illumination | non-illuminative |

IP-Rating

| | |
|------------------|------|
| Front protection | IP65 |
|------------------|------|

Connection Method

| | |
|----------|--------|
| Terminal | Solder |
|----------|--------|

Actuator

| | |
|------------------|------------|
| Switching action | Maintained |
|------------------|------------|

Switching element

| | |
|-------------------|-------------------------------|
| Switching system | Snap-action switching element |
| Contacts | 1 NC + 1 NO |
| Switching current | 5 A |
| Contact material | gold-plated silver |
| Switching voltage | 250 V AC |

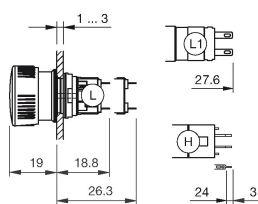
Function

| |
|-------------|
| Stop switch |
|-------------|

EAO – Your Expert Partner for Human Machine Interfaces

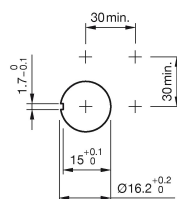
51-256.025 - Stop switch complete

Dimensions

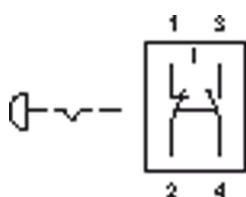


H = Universal terminal 2.0 x 0.5 mm

Mounting cut-outs



Wiring diagram



Additional information

Marking arrows

If the anti-twist ring is not used the panel thickness increases to 4 mm

Legend

Contacts: NC = Normally closed, NO = Normally open

Switching action: C = Maintained

Mouser Electronics

Authorized Distributor

Click to View Pricing, Inventory, Delivery & Lifecycle Information:

EAO:

[51-256.025](#)