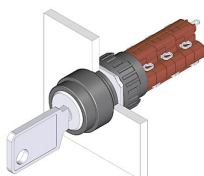


EAO – Your Expert Partner for Human Machine Interfaces

51-137.025D2 - Keylock switch 2 positions

51-137.025D2 - Keylock switch 2 positions



Attention: The preview is based on a sample product. This can differ from your current configuration.

Mounting

Mounting cut-out	Ø 16 mm
Design	raised

Front

Front dimension	Ø 18 mm
Front shape	round

Other Attributes

Weight	0,016 kg
--------	----------

Operating-/Indication part

Switching angle	90° right
-----------------	-----------

IP-Rating

Front protection	IP65
------------------	------

Connection Method

Terminal	Solder
----------	--------

Actuator

Switching action	Rest(a) - Maintain(a)
------------------	-----------------------

Switching element

Rotary positions	2
Switching system	Snap-action switching element
Switching current	5 A
Contacts	3 NC + 3 NO
Contact material	
Switching voltage	250 V AC

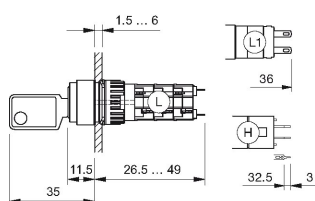
Function

Keylock switch	
----------------	--

EAO – Your Expert Partner for Human Machine Interfaces

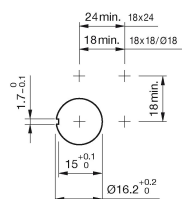
51-137.025D2 - Keylock switch 2 positions

Dimensions

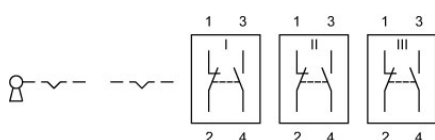


H = Universal terminal 2.0 x 0.5 mm

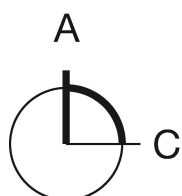
Mounting cut-outs



Wiring diagram



Switching positions



Additional information

Standard lock: DOM 311

Two keys are supplied with each key lock switch

Optional lock numbers on request

Legend

Contacts: NC = Normally closed, NO = Normally open

Switching action: A = Rest, C = Maintained

Mouser Electronics

Authorized Distributor

Click to View Pricing, Inventory, Delivery & Lifecycle Information:

EAO:

[51-137.025D2](#)