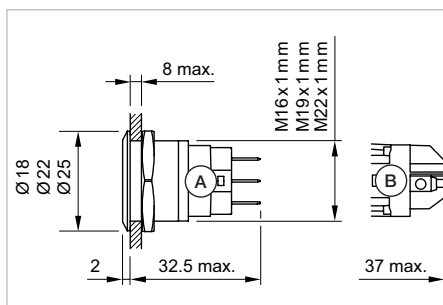


Series 82, Order sheet

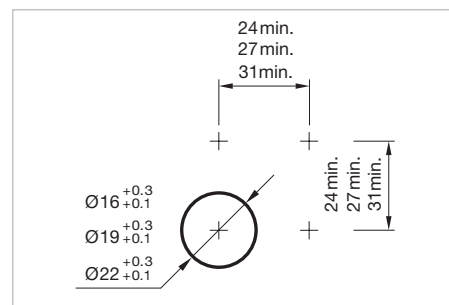
Pushbutton IP65, IP67



Product can differ from the current configuration.



Dimensions [mm]
A = Solder terminal
B = Screw terminal



Mounting cut-outs [mm]

Mounting cut-outs

☐ 4 | Ø 16 mm

☐ 5 | Ø 19 mm

☐ 6 | Ø 22 mm

Material

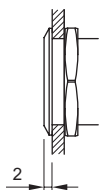
☐ 1 | Stainless steel

☐ 2 | Stainless steel chrome coloured

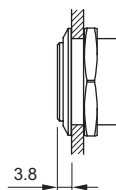
☐ 5 | Aluminium natural anodized

Front bezel / Lens

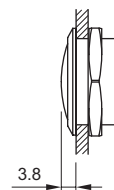
☐ 5 | flush / flat



☐ 6 | raised / flat



☐ 7 | flush / convex



Terminal

☐ 1 | solder

☐ 2 | screw

Switching action

☐ 1 | momentary

☐ 2 | maintained

Illumination

☐ 0 | no LED

LED colour

☐ 0 | no LED

LED voltage

☐ 0 | no LED

Order example for pushbutton

Mounting cut-outs

☐ 4 | Ø 16 mm

☒ 5 | Ø 19 mm

☐ 6 | Ø 22 mm

Material

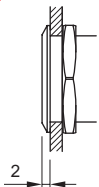
☐ 1 | Stainless steel

☐ 2 | Stainless steel chrome coloured

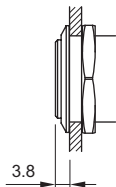
☒ 5 | Aluminium natural anodized

Front bezel / Lens

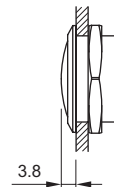
☒ 5 | flush / flat



☐ 6 | raised / flat



☐ 7 | flush / convex



Terminal

☒ 1 | solder

☐ 2 | screw

Switching action

☒ 1 | momentary

☐ 2 | maintained

Illumination

☒ 0 | no LED

LED colour

☒ 0 | no LED

LED voltage

☒ 0 | no LED



Part No.:

82-5551.1000

Mouser Electronics

Authorized Distributor

Click to View Pricing, Inventory, Delivery & Lifecycle Information:

EAO:

82-5351.1000