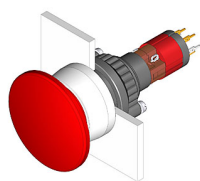


# EAO – Your Expert Partner for Human Machine Interfaces

## 14-744.0292 - Mushroom-head pushbutton actuator illuminated

### 14-744.0292 - Mushroom-head pushbutton actuator illuminated



*Attention: The preview is based on a sample product. This can differ from your current configuration.*

#### Mounting

Mounting cut-out	Ø 22,3 mm
Design	raised

#### Front

Front dimension	Ø 29 mm
Front shape	round

#### Other Attributes

Weight	0,014 kg
Diode 1N4007	2

#### Operating-/Indication part

Lens illumination	illuminative
-------------------	--------------

#### IP-Rating

Front protection	IP67
------------------	------

#### Connection Method

Terminal	Universal-Solder
----------	------------------

#### Actuator

Switching action	Momentary
Housing colour	black
Housing material	Plastic

#### Switching element

Switching system	Snap-action switching element
Switching current	5 A
Contacts	1 NC + 1 NO
Contact material	
Switching voltage	250 V AC

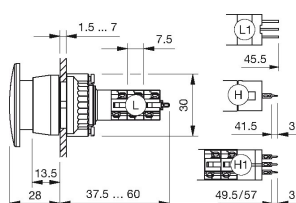
#### Function

Mushroom-head pushbutton
--------------------------

# EAO – Your Expert Partner for Human Machine Interfaces

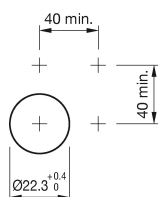
14-744.0292 - Mushroom-head pushbutton actuator illuminated

## Dimensions

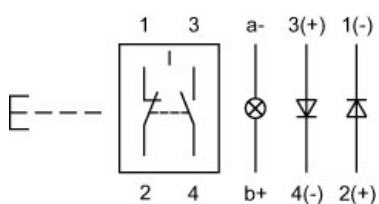


H1 = Universal-Solder terminal

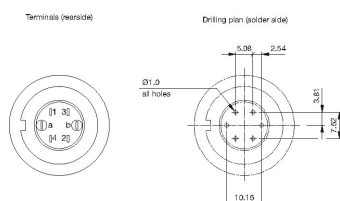
## Mounting cut-outs



## Wiring diagram



## Component layout



## Legend

Contacts: NC = Normally closed, NO = Normally open

Switching action: B = Momentary

# Mouser Electronics

Authorized Distributor

Click to View Pricing, Inventory, Delivery & Lifecycle Information:

EAO:

14-744.0292