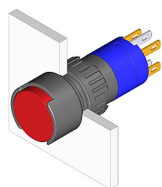


EAO – Your Expert Partner for Human Machine Interfaces

51-271.022 - Illuminated pushbutton actuator

51-271.022 - Illuminated pushbutton actuator



Attention: The preview is based on a sample product. This can differ from your current configuration.

Mounting

Mounting cut-out	Ø 16 mm
Design	raised

Front

Front dimension	Ø 18 mm
Front shape	round
Front bezel colour	black
Front bezel material	Plastic

Other Attributes

Weight	0,006 kg
--------	----------

Operating-/Indication part

Lens illumination	illuminative
-------------------	--------------

IP-Rating

Front protection	IP65
------------------	------

Connection Method

Terminal	Solder 2.8 x 0.5 mm
----------	---------------------

Actuator

Switching action	Maintained
Housing colour	black
Housing material	Plastic

Switching element

Switching system	Snap-action switching element
Contacts	1 NC + 1 NO
Switching current	5 A
Contact material	
Switching voltage	250 V AC

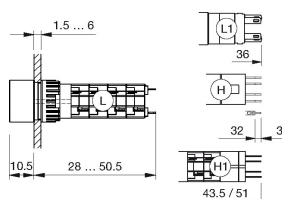
Function

Illuminated pushbutton

EAO – Your Expert Partner for Human Machine Interfaces

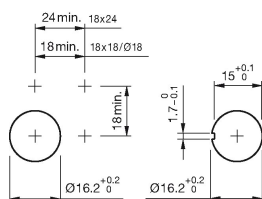
51-271.022 - Illuminated pushbutton actuator

Dimensions

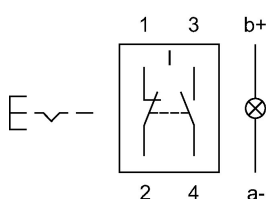


H = Universal terminal 2.0 x 0.5 mm

Mounting cut-outs



Wiring diagram



Legend

Contacts: NC = Normally closed, NO = Normally open

Switching action: C = Maintained

Mouser Electronics

Authorized Distributor

Click to View Pricing, Inventory, Delivery & Lifecycle Information:

EAO:

[51-271.022](#)