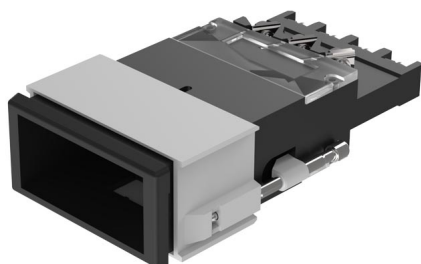


# EAO – Your Expert Partner for Human Machine Interfaces

## 03-623.011 - Pushbutton actuator double-headed

### 03-623.011 - Pushbutton actuator double-headed



*Attention: The preview is based on a sample product. This can differ from your current configuration.*

#### Mounting

Mounting cut-out	21,2 mm x 41,2 mm
Design	flush

#### Front

Front dimension	24 mm x 48 mm
Front bezel colour	black
Front bezel material	Plastic
Front shape	rectangular

#### Other Attributes

Weight	0,065 kg
--------	----------

#### Operating-/Indication part

Lens illumination	non-illuminative
-------------------	------------------

#### IP-Rating

Front protection	IP40
------------------	------

#### Connection Method

Terminal	Screw terminal
----------	----------------

#### Actuator

Switching action	
Housing colour	black
Housing material	Plastic

#### Switching element

Switching system	Snap-action switching element
Contacts	2 C
Switching voltage	400 V AC
Switching current	10 A
Contact material	Silver

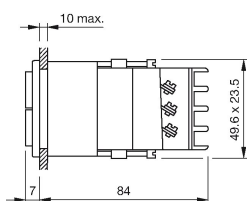
#### Function

Pushbutton
------------

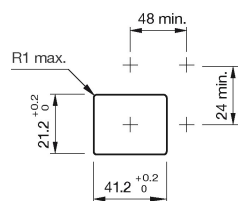
# EAO – Your Expert Partner for Human Machine Interfaces

03-623.011 - Pushbutton actuator double-headed

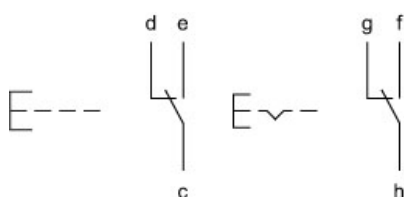
## Dimensions



## Mounting cut-outs



## Wiring diagram



## Additional information

Has independent changeover

## Legend

Contacts: C = Changeover

Switching action: B = Momentary, C = Maintained

# Mouser Electronics

Authorized Distributor

Click to View Pricing, Inventory, Delivery & Lifecycle Information:

EAO:

03-623.011