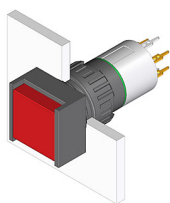


EAO – Your Expert Partner for Human Machine Interfaces

51-452.036 - Illuminated pushbutton actuator

51-452.036 - Illuminated pushbutton actuator



Attention: The preview is based on a sample product. This can differ from your current configuration.

Mounting

Mounting cut-out	Ø 16 mm
Design	raised

Front

Front dimension	18 mm x 18 mm
Front shape	square
Front bezel colour	black
Front bezel material	Plastic

Other Attributes

Weight	0,007 kg
--------	----------

Operating-/Indication part

Lens illumination	illuminative
-------------------	--------------

IP-Rating

Front protection	IP65
------------------	------

Connection Method

Terminal	Universal 2.0 x 0.5 mm
----------	------------------------

Actuator

Switching action	Momentary
Housing colour	black
Housing material	Plastic

Switching element

Switching system	Low-level element
Contacts	2 NC
Switching voltage	42 V AC/DC
Switching current	0.1 A
Contact material	

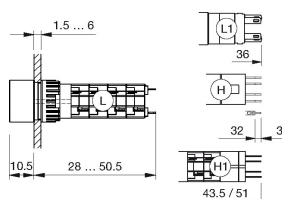
Function

Illuminated pushbutton

EAO – Your Expert Partner for Human Machine Interfaces

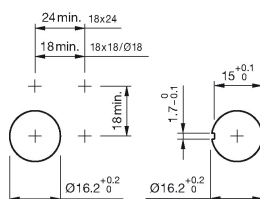
51-452.036 - Illuminated pushbutton actuator

Dimensions

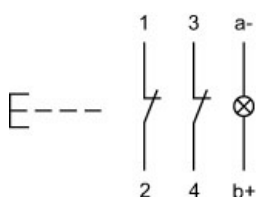


H = Universal terminal 2.0 x 0.5 mm

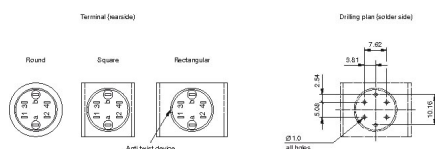
Mounting cut-outs



Wiring diagram



Component layout



Legend

Contacts: NC = Normally closed, NO = Normally open

Switching action: B = Momentary

Mouser Electronics

Authorized Distributor

Click to View Pricing, Inventory, Delivery & Lifecycle Information:

EAO:

[51-452.036](#)