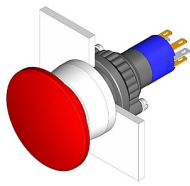


EAO – Your Expert Partner for Human Machine Interfaces

14-271.022 - Mushroom-head pushbutton actuator illuminated

14-271.022 - Mushroom-head pushbutton actuator illuminated



Attention: The preview is based on a sample product. This can differ from your current configuration.

Mounting

Mounting cut-out Design \varnothing 22,3 mm raised

Front

Front dimension \varnothing 29 mm
Front shape round

Other Attributes

Weight 0,013 kg

Operating-/Indication part

Lens illumination illuminative

IP-Rating

Front protection IP67

Connection Method

Terminal Solder 2.8 x 0.5 mm

Actuator

Switching action Maintained
Housing colour black
Housing material Plastic

Switching element

Switching system Snap-action switching element
Contacts 1 NC + 1 NO
Switching current 5 A
Contact material
Switching voltage 250 V AC

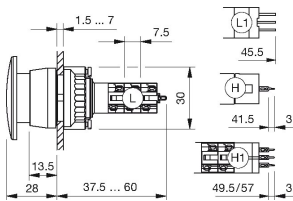
Function

Mushroom-head pushbutton

EAO – Your Expert Partner for Human Machine Interfaces

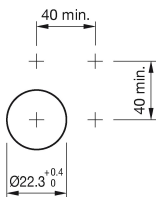
14-271.022 - Mushroom-head pushbutton actuator illuminated

Dimensions

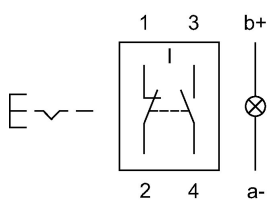


L1 = Solder/Plug-in terminal 2.8 x 0.5 mm

Mounting cut-outs



Wiring diagram



Legend

Contacts: NC = Normally closed, NO = Normally open
Switching action: C = Maintained

Mouser Electronics

Authorized Distributor

Click to View Pricing, Inventory, Delivery & Lifecycle Information:

EAO:

[14-271.022](#)