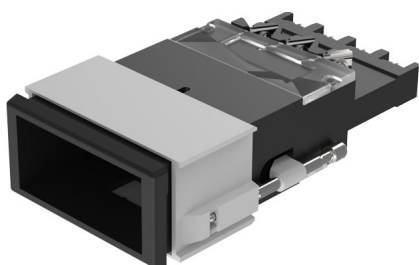


# EAO – Your Expert Partner for Human Machine Interfaces

## 03-617.011 - Illuminated pushbutton actuator single-headed

### 03-617.011 - Illuminated pushbutton actuator single-headed



*Attention: The preview is based on a sample product. This can differ from your current configuration.*

#### Mounting

Mounting cut-out	21,2 mm x 41,2 mm
Design	flush

#### Front

Front dimension	24 mm x 48 mm
Front bezel colour	black
Front bezel material	Plastic
Front shape	rectangular

#### Other Attributes

Weight	0,075 kg
--------	----------

#### Operating-/Indication part

Lens illumination	illuminative
-------------------	--------------

#### IP-Rating

Front protection	IP40
------------------	------

#### Connection Method

Terminal	Screw terminal
----------	----------------

#### Actuator

Switching action	Momentary
Housing colour	black
Housing material	Plastic

#### Switching element

Switching system	Snap-action switching element
Contacts	2 C
Switching voltage	400 V AC
Switching current	10 A
Contact material	Silver

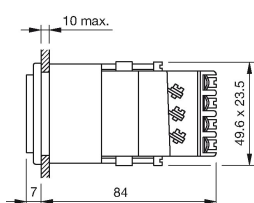
#### Function

Illuminated pushbutton
------------------------

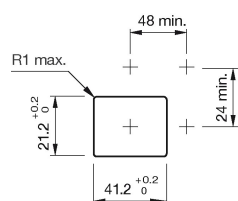
# EAO – Your Expert Partner for Human Machine Interfaces

03-617.011 - Illuminated pushbutton actuator single-headed

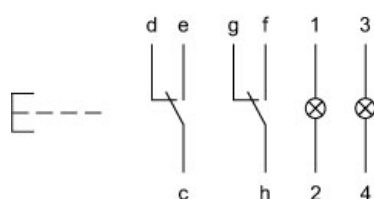
## Dimensions



## Mounting cut-outs



## Wiring diagram



## Additional information

Has two independent lamp bases  
Light barrier ordered separately

## Legend

Contacts: C = Changeover  
Switching action: B = Momentary

# Mouser Electronics

Authorized Distributor

Click to View Pricing, Inventory, Delivery & Lifecycle Information:

EAO:

03-617.011