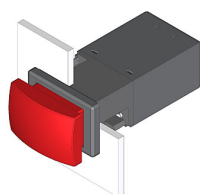


# EAO – Your Expert Partner for Human Machine Interfaces

## 22-212.011 - Mushroom-head pushbutton actuator

### 22-212.011 - Mushroom-head pushbutton actuator



*Attention: The preview is based on a sample product. This can differ from your current configuration.*

#### Mounting

Mounting cut-out  
Design 22 mm x 30 mm  
flush

#### Front

Front dimension 24 mm x 36 mm  
Front bezel colour black  
Front bezel material Plastic  
Front shape rectangular

#### Other Attributes

Weight 0,037 kg

#### Operating-/Indication part

Lens illumination

#### IP-Rating

Front protection IP65

#### Connection Method

Terminal Screw terminal

#### Actuator

Switching action Momentary  
Housing colour black  
Housing material Plastic

#### Switching element

Switching system Snap-action switching element  
Contacts 1 NC  
Switching voltage 400 V AC  
Switching current 10 A  
Contact material Silver

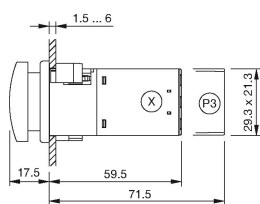
#### Function

Mushroom-head pushbutton

# EAO – Your Expert Partner for Human Machine Interfaces

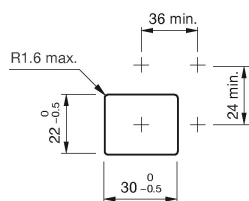
## 22-212.011 - Mushroom-head pushbutton actuator

### Dimensions

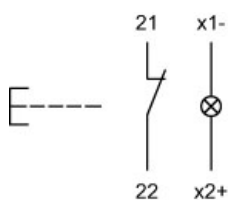


X = Screw terminal

### Mounting cut-outs



### Wiring diagram



### Legend

Contacts: NC = Normally closed  
Switching action: B = Momentary

# Mouser Electronics

Authorized Distributor

Click to View Pricing, Inventory, Delivery & Lifecycle Information:

EAO:

[22-212.011](#)