

EAO – Your Expert Partner for Human Machine Interfaces

82-6151.0153 - Indicator 22 mm stainless-steel

82-6151.0153 - Indicator 22 mm stainless-steel



Attention: The preview is based on a sample product. This can differ from your current configuration.

Mounting

Design	flush
Mounting cut-out	Ø 22,3 mm

Front

Front dimension	Ø 25 mm
Front shape	round
Front ring shape	flush
Front bezel material	Stainless steel

Other Attributes

Operating voltage	12 V AC/DC
Weight	0,018 kg
Operation current	7 mA

Operating-/Indication part

Lens optics	opaque
Lens material	Stainless steel
Lens profile	flat
Lens illumination	illuminative
Lens colour	Stainless steel

IP-Rating

Front protection	IP65, IP67
------------------	------------

Connection Method

Terminal	Solder 2.8 x 0.5 mm
----------	---------------------

Illumination

Illumination	Ring with white LED
--------------	---------------------

Function

Indicator	
-----------	--

EAO – Your Expert Partner for Human Machine Interfaces

82-6151.0153 - Indicator 22 mm stainless-steel

Dimensions

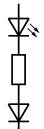


Mounting cut-outs



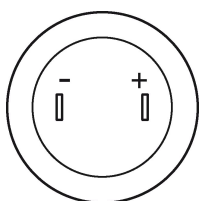
Wiring diagram

x2+



x1-

Component layout



Mouser Electronics

Authorized Distributor

Click to View Pricing, Inventory, Delivery & Lifecycle Information:

EAO:

[82-6151.0153](#)