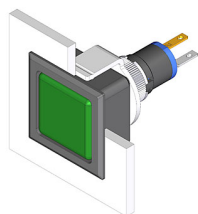


EAO – Your Expert Partner for Human Machine Interfaces

18-288.035 - Pushbutton actuator

18-288.035 - Pushbutton actuator



Attention: The preview is based on a sample product. This can differ from your current configuration.

Mounting

Design flush

Front

Front bezel colour black
Front bezel material Plastic

Other Attributes

Weight 0,002 kg

Operating-/Indication part

Lens illumination illuminative

IP-Rating

Front protection IP40

Connection Method

Terminal Solder

Actuator

Switching action Maintained
Housing colour black
Housing material Plastic

Switching element

Switching system Snap-action switching element
Contacts 1 NC
Switching voltage 42 V AC/DC
Switching current 0.1 A
Contact material

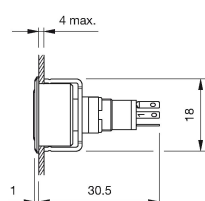
Function

Pushbutton

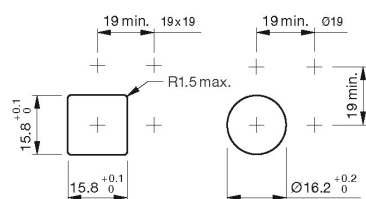
EAO – Your Expert Partner for Human Machine Interfaces

18-288.035 - Pushbutton actuator

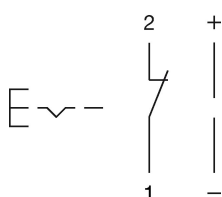
Dimensions



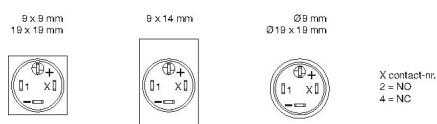
Mounting cut-outs



Wiring diagram



Component layout



Additional information

+/- terminals are not connected

Legend

Contacts: NC = Normally closed

Switching action: C = Maintained

Mouser Electronics

Authorized Distributor

Click to View Pricing, Inventory, Delivery & Lifecycle Information:

EAO:

18-288.035