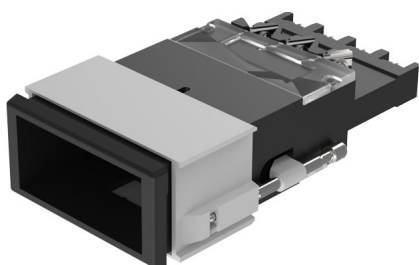


EAO – Your Expert Partner for Human Machine Interfaces

03-626.011 - Illuminated pushbutton actuator double-headed

03-626.011 - Illuminated pushbutton actuator double-headed



Attention: The preview is based on a sample product. This can differ from your current configuration.

Mounting

Mounting cut-out	21,2 mm x 41,2 mm
Design	flush

Front

Front dimension	24 mm x 48 mm
Front bezel colour	black
Front bezel material	Plastic
Front shape	rectangular

Other Attributes

Weight	0,080 kg
--------	----------

Operating-/Indication part

Lens illumination	illuminative
-------------------	--------------

IP-Rating

Front protection	IP40
------------------	------

Connection Method

Terminal	Screw terminal
----------	----------------

Actuator

Switching action	
Housing colour	black
Housing material	Plastic

Switching element

Switching system	Snap-action switching element
Contacts	2 C
Switching voltage	400 V AC
Switching current	10 A
Contact material	Silver

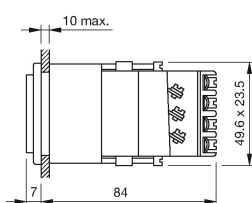
Function

Illuminated pushbutton

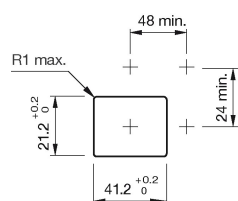
EAO – Your Expert Partner for Human Machine Interfaces

03-626.011 - Illuminated pushbutton actuator double-headed

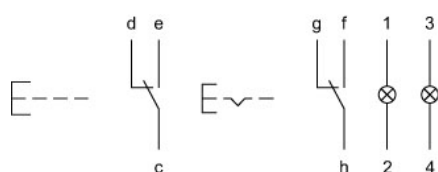
Dimensions



Mounting cut-outs



Wiring diagram



Additional information

Has two independent lamp bases
Has independent changeover

Legend

Contacts: C = Changeover

Switching action: B = Momentary, C = Maintained

Mouser Electronics

Authorized Distributor

Click to View Pricing, Inventory, Delivery & Lifecycle Information:

EAO:

[03-626.011](#)