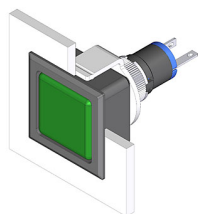


EAO – Your Expert Partner for Human Machine Interfaces

18-081.0052L - Indicator actuator

18-081.0052L - Indicator actuator



Attention: The preview is based on a sample product. This can differ from your current configuration.

Mounting

Design flush

Other Attributes

Weight 0.003 kg
Operation current 10 mA
Operating voltage 12 V DC $\pm 10\%$

Operating-/Indication part

Lens material Plastic
Lens colour red
Lens profile flat
Lens optics translucent
Lens illumination illuminative

IP-Rating

Front protection IP40

Connection Method

Terminal Solder

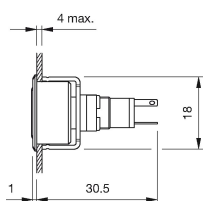
Function

Indicator

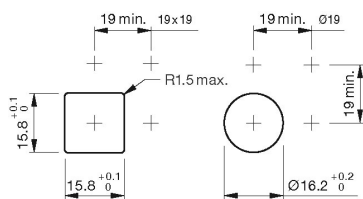
EAO – Your Expert Partner for Human Machine Interfaces

18-081.0052L - Indicator actuator

Dimensions



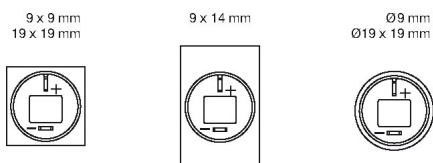
Mounting cut-outs



Wiring diagram



Component layout



Additional information

Luminosity and wave length variations caused by LED manufacturing processes may cause slight differences regarding the illumination

Mouser Electronics

Authorized Distributor

Click to View Pricing, Inventory, Delivery & Lifecycle Information:

EAO:

[18-081.0052L](#)