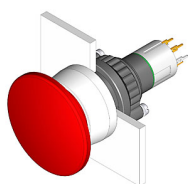


# EAO – Your Expert Partner for Human Machine Interfaces

## 14-473.036 - Mushroom-head pushbutton actuator illuminated

### 14-473.036 - Mushroom-head pushbutton actuator illuminated



*Attention: The preview is based on a sample product. This can differ from your current configuration.*

#### Mounting

|                  |           |
|------------------|-----------|
| Mounting cut-out | Ø 22,3 mm |
| Design           | raised    |

#### Front

|                 |         |
|-----------------|---------|
| Front dimension | Ø 29 mm |
| Front shape     | round   |

#### Other Attributes

|        |          |
|--------|----------|
| Weight | 0,015 kg |
|--------|----------|

#### Operating-/Indication part

|                   |              |
|-------------------|--------------|
| Lens illumination | illuminative |
|-------------------|--------------|

#### IP-Rating

|                  |      |
|------------------|------|
| Front protection | IP67 |
|------------------|------|

#### Connection Method

|          |                        |
|----------|------------------------|
| Terminal | Universal 2.0 x 0.5 mm |
|----------|------------------------|

#### Actuator

|                  |            |
|------------------|------------|
| Switching action | Maintained |
| Housing colour   | black      |
| Housing material | Plastic    |

#### Switching element

|                   |                   |
|-------------------|-------------------|
| Switching system  | Low-level element |
| Contacts          | 1 NC + 1 NO       |
| Switching voltage | 42 V AC/DC        |
| Switching current | 0.1 A             |
| Contact material  |                   |

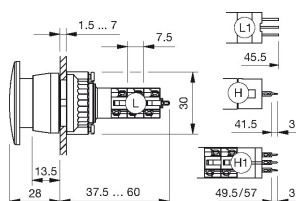
#### Function

|                          |
|--------------------------|
| Mushroom-head pushbutton |
|--------------------------|

# EAO – Your Expert Partner for Human Machine Interfaces

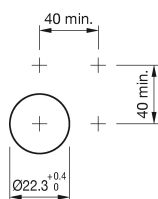
## 14-473.036 - Mushroom-head pushbutton actuator illuminated

### Dimensions

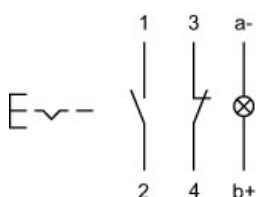


H = Universal terminal 2.0 x 0.5 mm

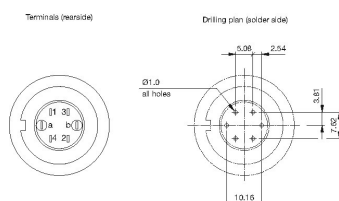
### Mounting cut-outs



### Wiring diagram



### Component layout



### Legend

Contacts: NC = Normally closed, NO = Normally open

Switching action: C = Maintained

# Mouser Electronics

Authorized Distributor

Click to View Pricing, Inventory, Delivery & Lifecycle Information:

EAO:

14-473.036