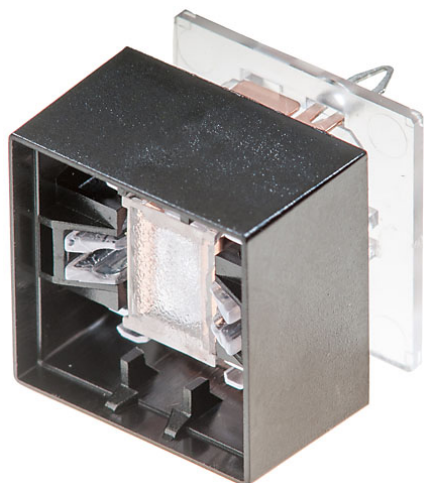


EAO – Your Expert Partner for Human Machine Interfaces

95-414.000 - Switching element

95-414.000 - Switching element



Attention: The preview is based on a sample product. This can differ from your current configuration.

Front

Front shape	square
Front dimension	19 mm x 19 mm

Other Attributes

Weight	0,003 kg
--------	----------

Operating-/Indication part

Lens illumination	illuminative
-------------------	--------------

IP-Rating

Front protection	IP40
------------------	------

Connection Method

Terminal	PCB
----------	-----

Actuator

Switching action	Momentary
------------------	-----------

Switching element

Switching system	Slow-make switching element
Contacts	1 NO
Switching voltage	48 V DC
Switching current	0.05 A
Contact material	

95-414.000 - Switching element

[illegible]

Switching action: B = Momentary

Mouser Electronics

Authorized Distributor

Click to View Pricing, Inventory, Delivery & Lifecycle Information:

EAO:

95-414.000