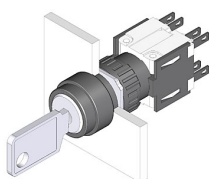


EAO – Your Expert Partner for Human Machine Interfaces

51-372.F22D - Keylock switch 3 positions

51-372.F22D - Keylock switch 3 positions



Attention: The preview is based on a sample product. This can differ from your current configuration.

Mounting

Mounting cut-out	Ø 16 mm
Design	raised

Front

Front dimension	Ø 18 mm
Front shape	round

Other Attributes

Weight	0,025 kg
--------	----------

Operating-/Indication part

Switching angle	
-----------------	--

IP-Rating

Front protection	IP65
------------------	------

Connection Method

Terminal	Solder 2.8 x 0.5 mm
----------	---------------------

Actuator

Switching action	Maintain(a) - Rest(a) - Maintain(a)
------------------	-------------------------------------

Switching element

Rotary positions	3
Switching system	Snap-action switching element
Switching current	5 A
Contacts	2 NC + 2 NO
Contact material	
Switching voltage	250 V AC

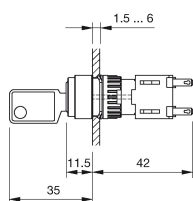
Function

Keylock switch	
----------------	--

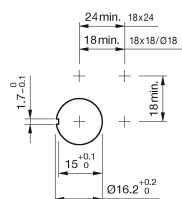
EAO – Your Expert Partner for Human Machine Interfaces

51-372.F22D - Keylock switch 3 positions

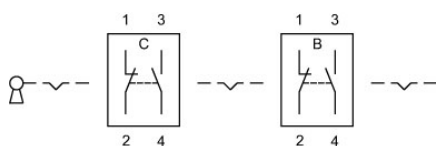
Dimensions



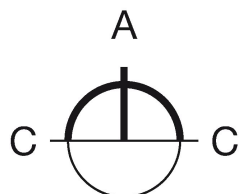
Mounting cut-outs



Wiring diagram



Switching positions



Additional information

Standard lock: DOM 311

Two keys are supplied with each key lock switch

Optional lock numbers on request

Legend

Contacts: NC = Normally closed, NO = Normally open

Switching action: A = Rest, C = Maintained

Mouser Electronics

Authorized Distributor

Click to View Pricing, Inventory, Delivery & Lifecycle Information:

EAO:

[51-372.F22D](#)