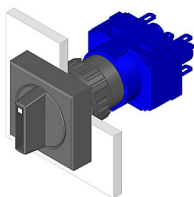


EAO – Your Expert Partner for Human Machine Interfaces

61-4610.0 - Selector switch actuator 3 positions square

61-4610.0 - Selector switch actuator 3 positions square



Attention: The preview is based on a sample product. This can differ from your current configuration.

Mounting

Mounting cut-out	Ø 16 mm
Design	raised

Other Attributes

Weight	0,006 kg
--------	----------

Operating-/Indication part

Switching angle	
Lever illumination	
Lever shape	short
Lever material	Plastic

IP-Rating

Front protection	IP65
------------------	------

Actuator

Switching action	Maintain - Rest - Maintain
------------------	----------------------------

Switching element

Rotary positions	3
------------------	---

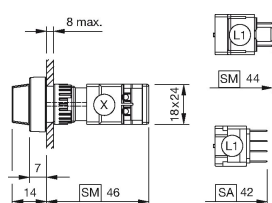
Function

Selector switch	
-----------------	--

EAO – Your Expert Partner for Human Machine Interfaces

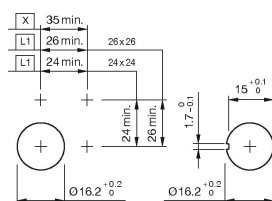
61-4610.0 - Selector switch actuator 3 positions square

Dimensions



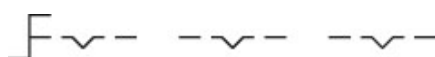
L1 = Solder/Plug-in terminal 2.8 x 0.5 mm

Mounting cut-outs

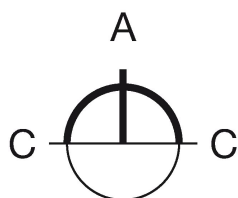


L1 = Solder/Plug-in terminal 2.8 x 0.5 mm

Wiring diagram



Switching positions



Additional information

illuminative

If mounted with anti-twist device, the lug is on the left side

Anti-twist ring not needed by using anti-twist device

Legend

Switching action: A = Rest, C = Maintained

Mouser Electronics

Authorized Distributor

Click to View Pricing, Inventory, Delivery & Lifecycle Information:

EAO:

61-4610.0